



RAD

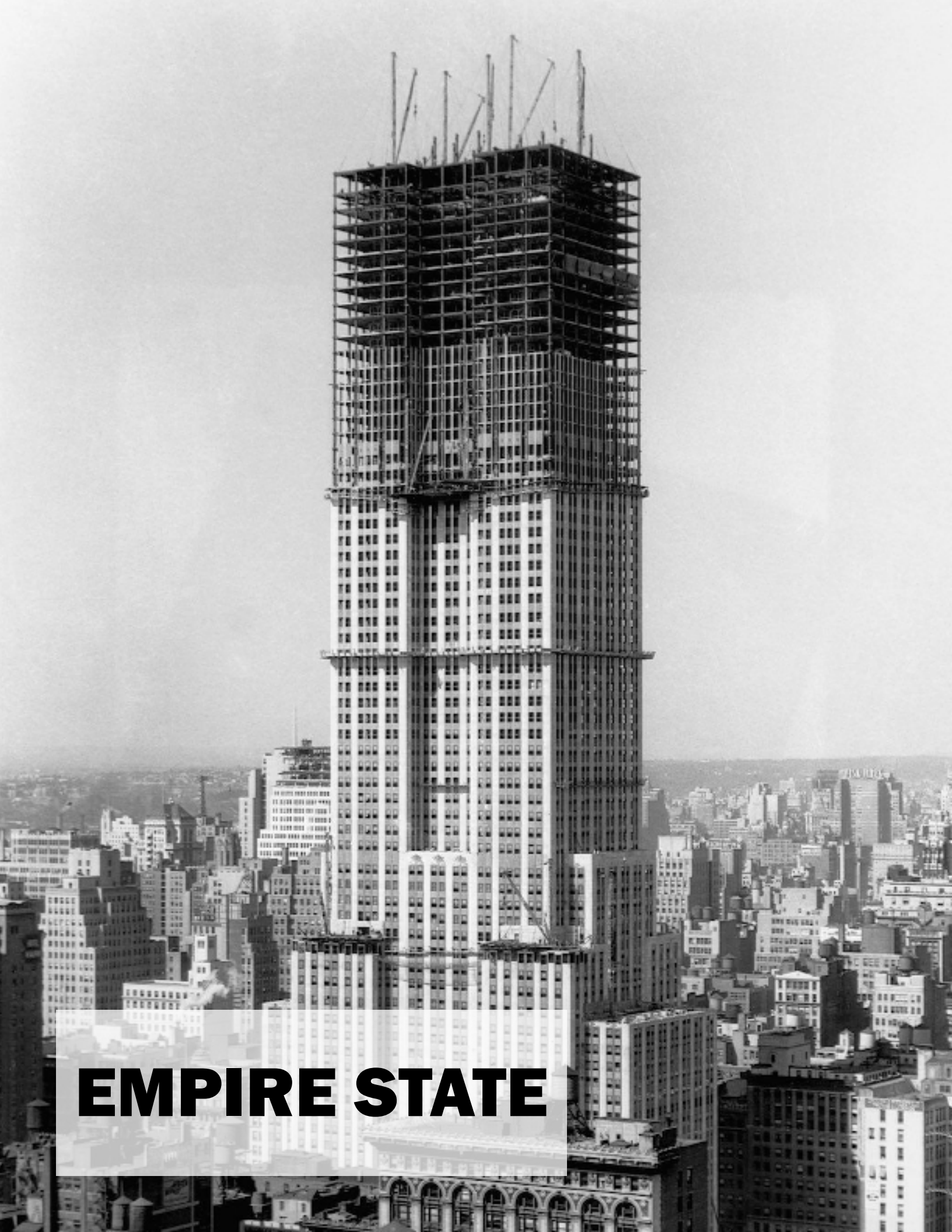
U R B A N

**ADVANCED MANUFACTURING FOR
HIGH-RISE BUILDING CONSTRUCTION**



THE PROBLEM





EMPIRE STATE



SALESFORCE



13 MONTHS



5 YEARS

An aerial view of a city skyline at dusk. The city is densely packed with high-rise buildings, many of which are illuminated from within, casting a warm glow. In the background, a range of mountains is visible, some with snow-capped peaks. The sky is a deep blue, and the water in the foreground reflects the city lights and the sky. The overall scene is a vibrant and modern urban landscape.

RAD

U R B A N

TRANSFORMING CONSTRUCTION, REIMAGINING CITIES



**\$360K
UNIT**



**\$330K
UNIT**

A dark, industrial factory interior. The scene is dominated by a complex network of yellow safety railings and blue machinery. The floor is dark and reflective. The background shows a large, open industrial space with various structures and equipment. The overall atmosphere is industrial and somewhat somber due to the low lighting.

HOW ARE WE DOING THIS?

MANUFACTURING

MODULAR PRODUCTION FACTORY







MANUFACTURED





**CREATING THE DESIGN & ENGINEERING
PROCESS OF TOMORROW**

RAD MODULATOR

The screenshot displays the RAD MODULATOR software interface. On the left is a project browser with a tree view of architectural disciplines and levels. The main workspace is divided into three sections: a 3D preview window showing a cutaway of a bedroom module, a description window, and a parameters window. The parameters window includes dropdown menus for TYPE (B-2), LENGTH (30'-0"), WIDTH (12'-6"), HEIGHT (9'-6"), FINISH (TYPE A), and COLOR (DARK). There is also a radio button option for 'Add Roof to Module'.

Preview

Description

Large Single Bedroom w/ 3-Fixture Bathroom and Hallway.

Parameters

- TYPE: B-2
- LENGTH: 30'-0"
- WIDTH: 12'-6"
- HEIGHT: 9'-6"
- FINISH: TYPE A
- COLOR: DARK

Add Roof to Module



COST

\$47,320

RAD MODULATOR

The screenshot displays the RAD MODULATOR software interface. On the left is a project browser with a tree view of architectural elements. The main workspace shows a 3D perspective view of a bedroom and bathroom. On the right is a 'Parameters' panel with the following settings:

- TYPE: B-2
- LENGTH: 32'-0"
- WIDTH: 10'-6"
- HEIGHT: 9'-6"
- FINISH: TYPE B
- COLOR: LIGHT
- Add Roof to Module

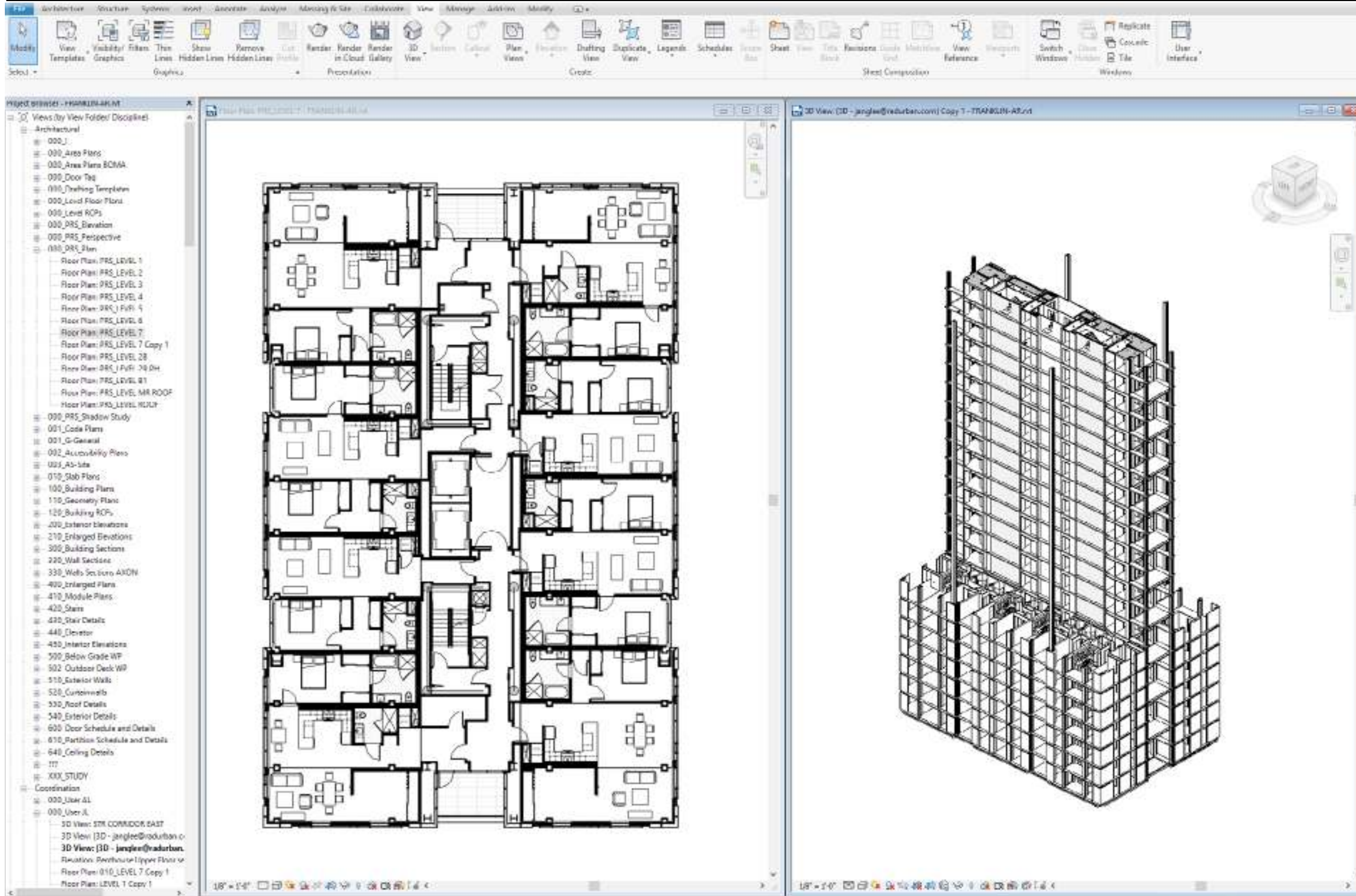
Below the 3D view is a 'Description' box containing the text: "Small Single Bedroom w/ 4-Fixture Bathroom and Three Closets."



COST

\$48,651

RAD MODULATOR

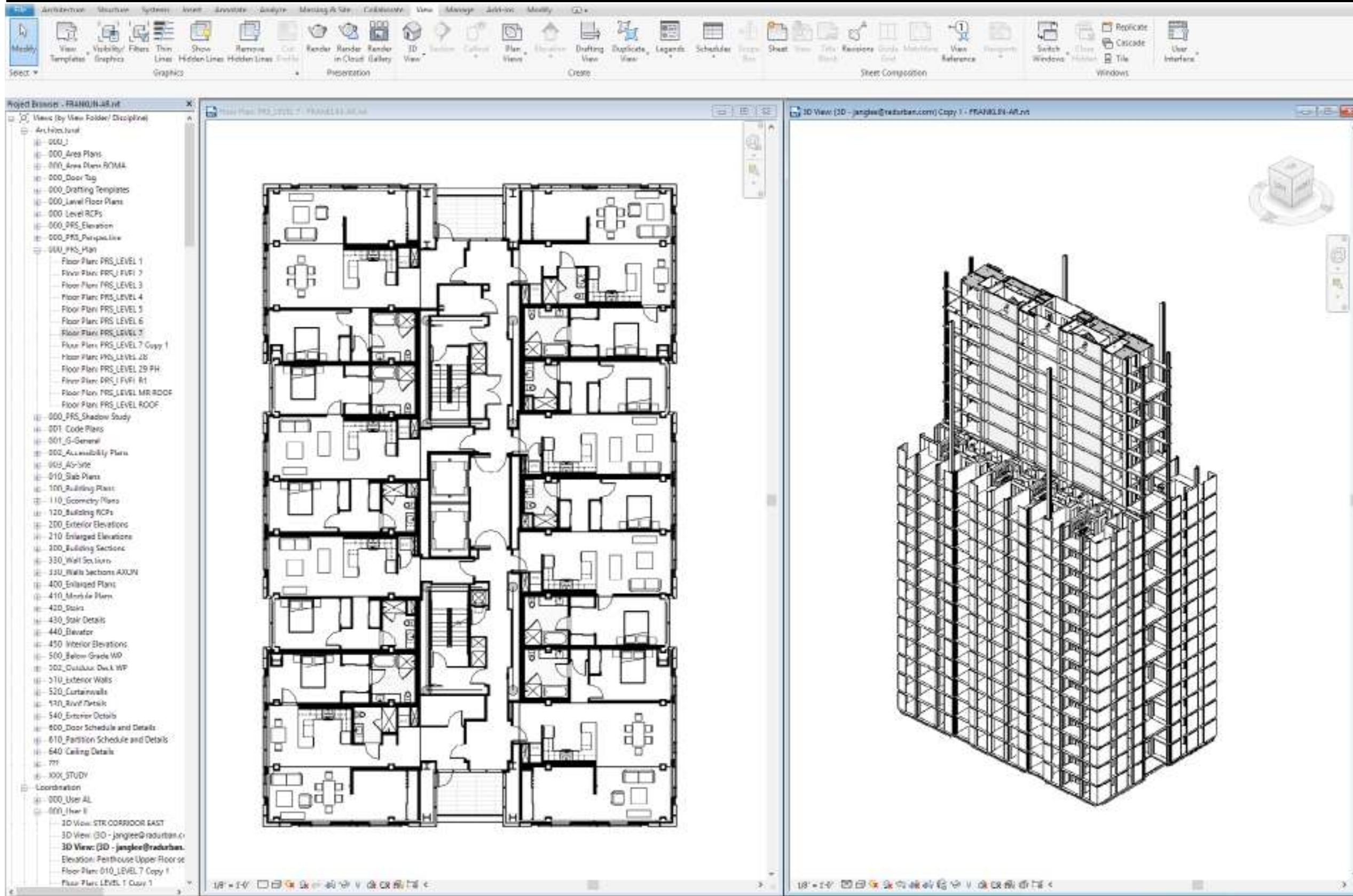


A	\$3,578,700.45
A1010	\$269,825.59
	\$50,997.96
	\$77,579.63
	\$141,248.00
A1020	\$3,262,386.72
	\$3,150,189.00
A1030	\$43,882.92
	\$43,882.92
A2010	\$2,605.23
	\$2,605.23
B	\$9,210,091.62
B1010	\$2,384,664.08
	\$2,103,447.03
	\$83,737.68
	\$197,479.36
B1020	\$71,904.05

COST

\$62,752,864

RAD MODULATOR

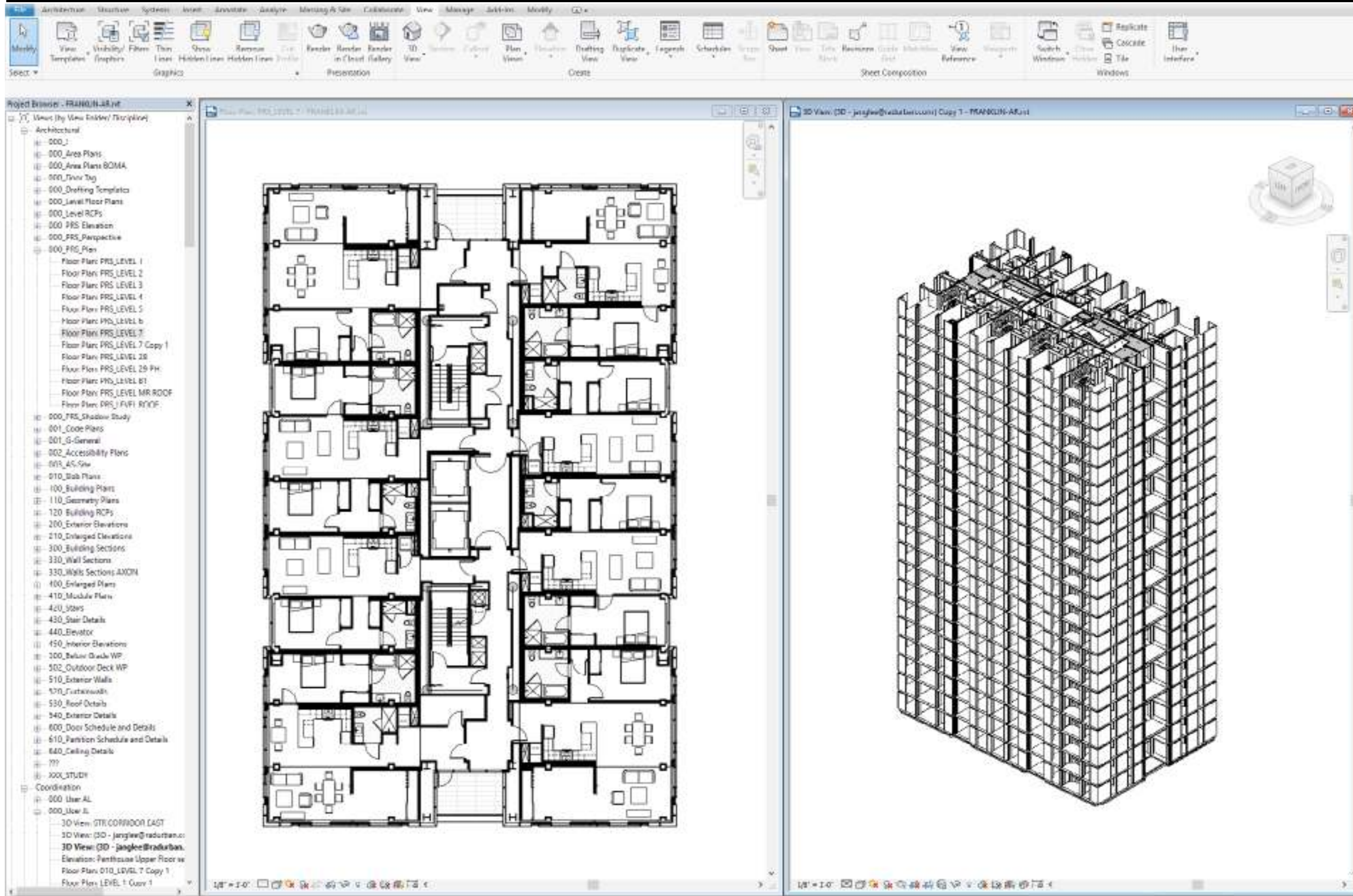


B3010	\$65,203.69
	\$12,062.37
	\$27,765.14
	\$15,288.63
	\$3,448.67
	\$6,638.88
C	\$9,103,909.99
	\$91,148.16
	\$715,907.95
C1020	\$2,485,550.13
	\$2,485,550.13
C1030	\$750,029.94
	\$402,364.61
	\$270,865.56
	\$76,799.78
C2010	\$589,865.40

COST

\$125,058,354

RAD MODULATOR

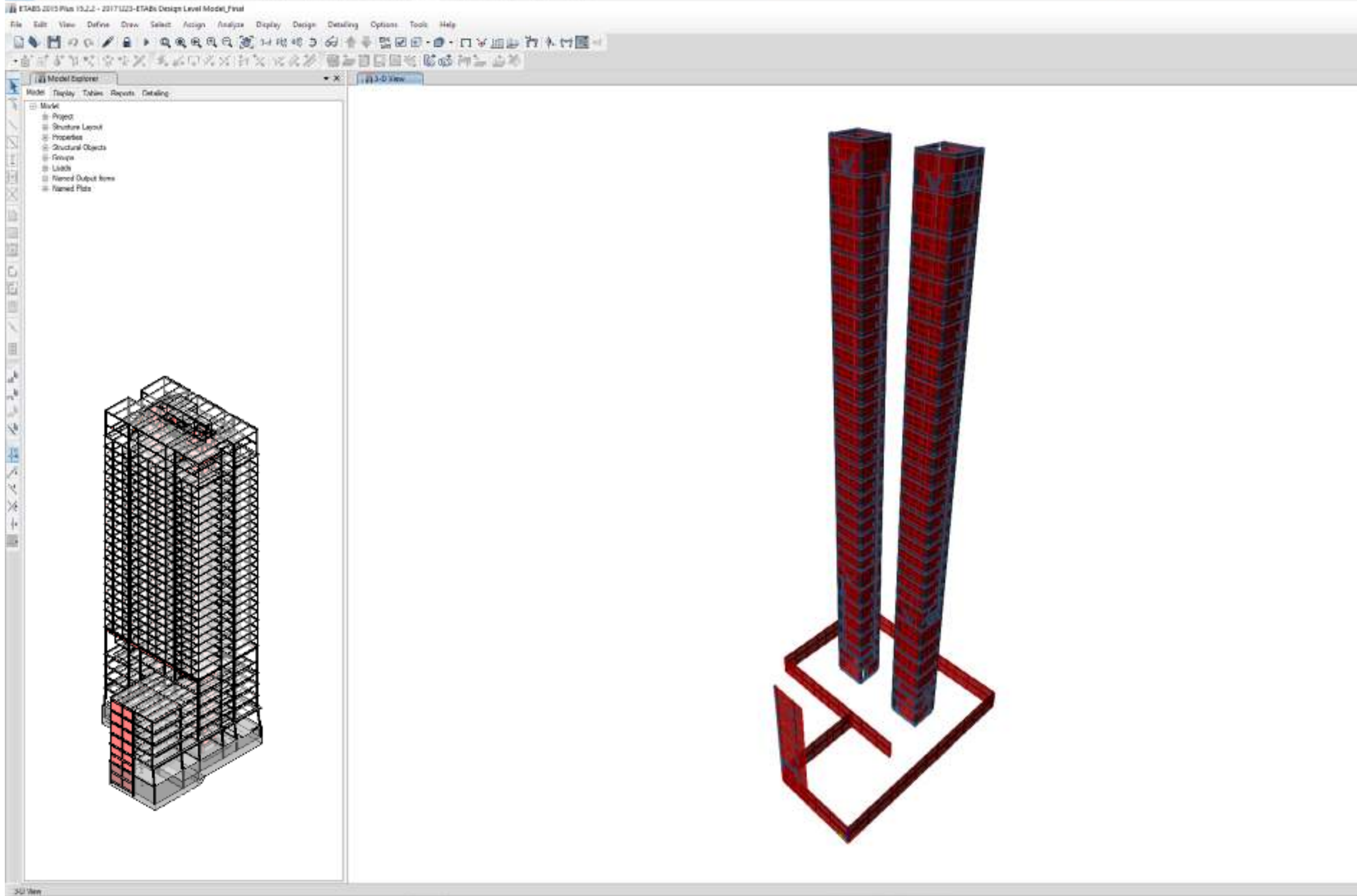


	\$91,148.16
	\$715,907.95
C1020	\$2,485,550.13
	\$2,485,550.13
C1030	\$750,029.94
	\$402,364.61
	\$270,865.56
	\$76,799.78
C3020	\$879,089.09
	\$385,515.72
	\$206,183.11
	\$65,074.09
	\$222,316.18
C3030	\$989,672.85
	\$989,672.85
D	\$11,874,342.42
D1010	\$2,201,996.00

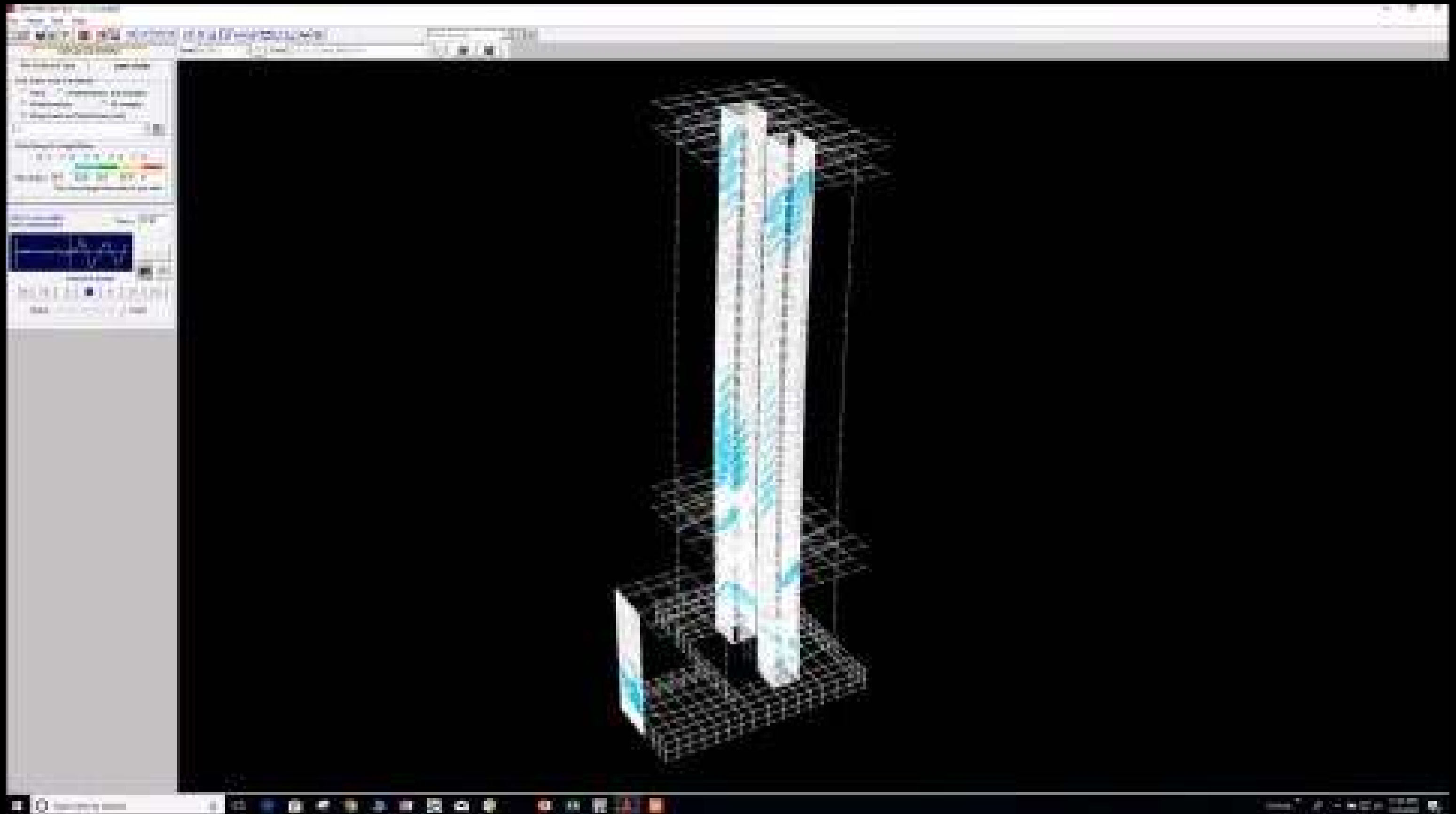
COST

\$187,148,651

RAD STRUCTURAL



RUN TEST



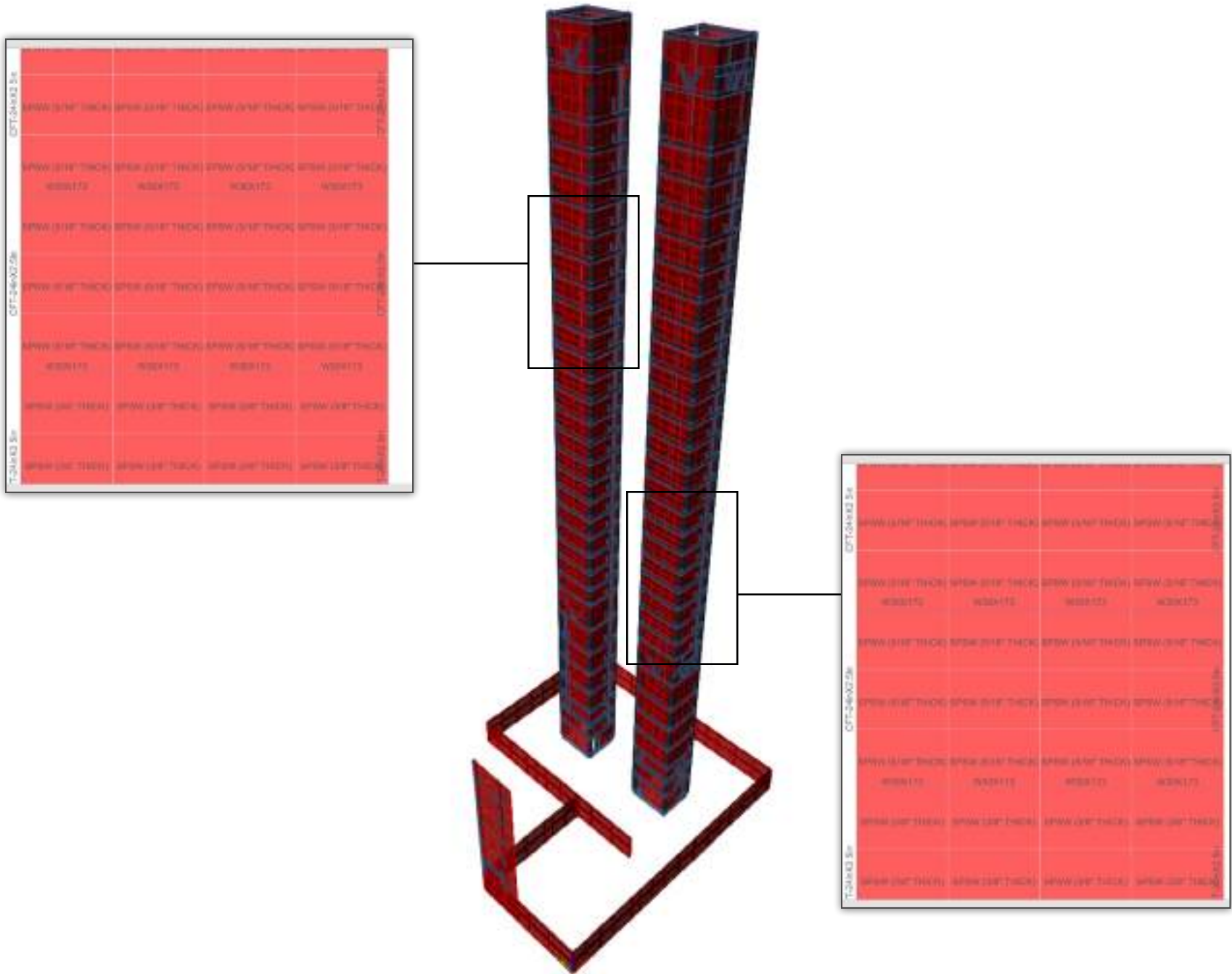
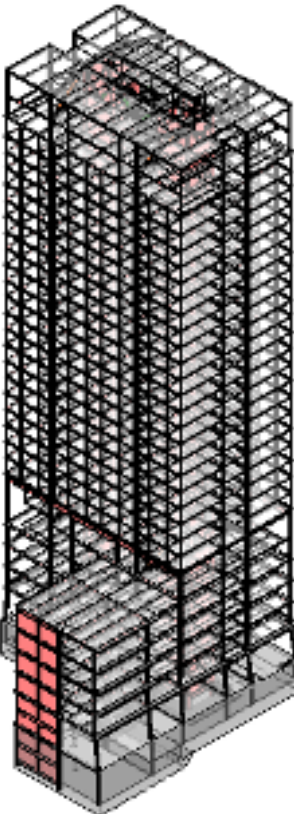
RAD STRUCTURAL

ETABS 2015 Plus 15.2.2 - 20171123-ETABS Design Level Model_Final

File Edit View Define Draw Select Assign Analyze Display Design Detailing Options Tools Help

Model Explorer

- Model
- Project
- Structure Layout
- Properties
- Structural Objects
- Groups
- Links
- Named Output Items
- Named Plots



3D View



REPORT



INSTALLATION

MATERIAL HANDLING

RECEIVING

**3RD PARTY MATERIAL
SUPPLY**



WHERE WE ARE TODAY



6137 MCARTHUR BLVD.

Height: 35 feet
Construction: Type II
Proof of concept carried out at cost



2201 DWIGHT WAY

Height: 75 feet
Gross Area: 73,776 sq ft
Construction: Type II Modular
TransForm: Platinum
Project Value: \$65 Million



5110 TELEGRAPH

Height: 74 feet
Gross Area: 394,960 sq ft
Construction: Type IA
Project Value: \$198 Million



2044 FRANKLIN

Height: 362 feet
Gross Area: 362,060 sq ft
Construction: Type IA
Project Value: \$268 Million



6137 MACARTHUR BLVD.



2201 DWIGHT WAY



5110 TELEGRAPH



2044 FRANKLIN

RAD URBAN BUILDS HIGH-RISE AT SAME COST AS MARKET LOW-RISE

MARKET
COST

RAD
COST

MARKET
COST

RAD
COST

MARKET
COST

RAD
COST

MARKET
COST

RAD
COST

An aerial photograph of a city skyline. In the foreground, a modern skyscraper with a dark frame and large glass windows is prominent. The rest of the city is visible in the background, with various buildings and a clear sky. The text 'RAD URBAN' is overlaid on the right side of the image.

RAD

U R B A N