

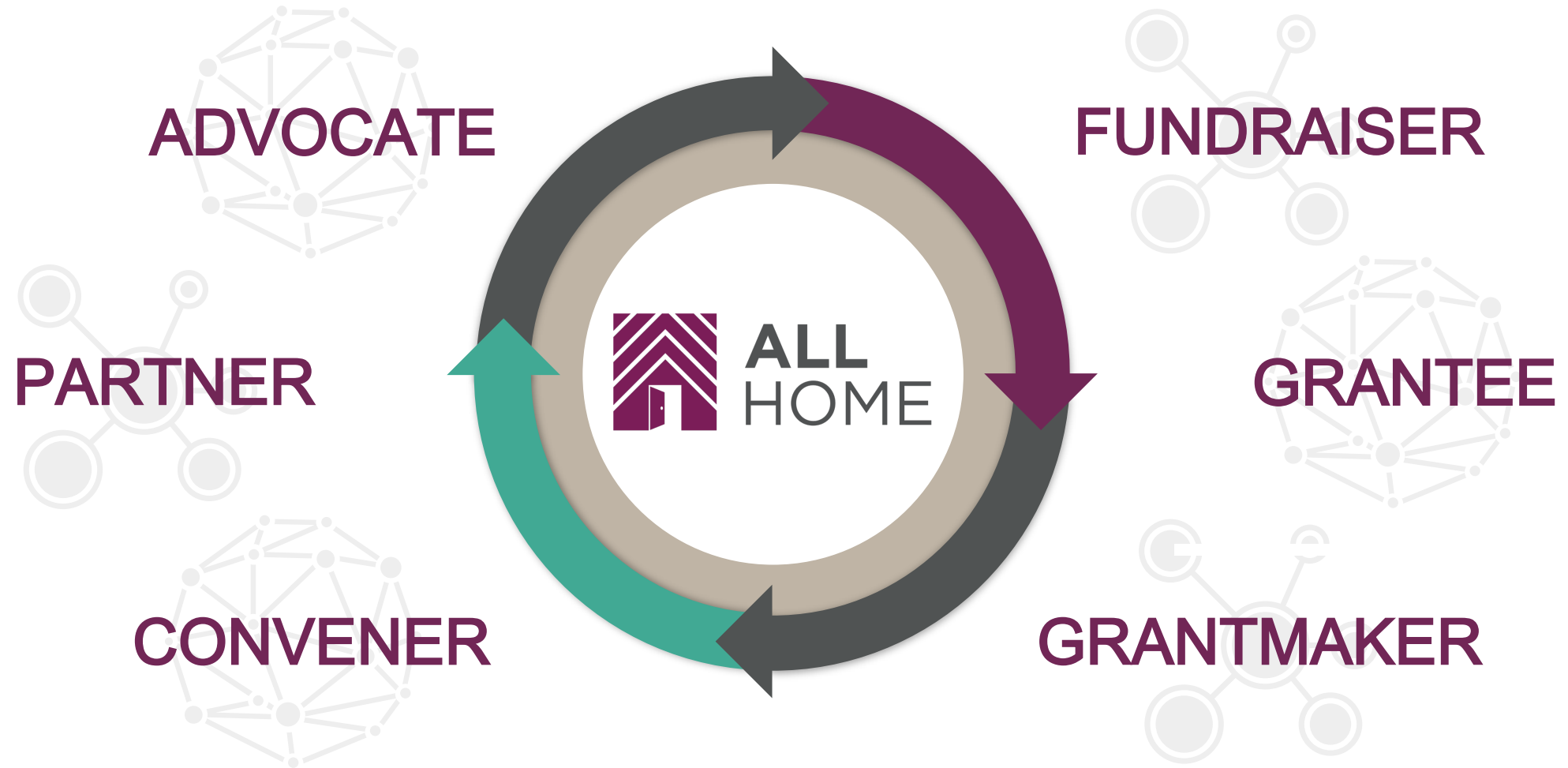
Bay Area Regional Homelessness Prevention

Irene Farnsworth, Director of Regional Homelessness Prevention

ifarnsworth@allhomeca.org



All Home | What We Do



Prevention Is a Continuum

Homelessness Diversion	Targeted Prevention	Eviction Prevention	Housing Supports
<p>Services:</p> <ul style="list-style-type: none"> • Housing Problem - Solving • Shelter and Crisis Services <p>Goals:</p> <ul style="list-style-type: none"> • Crisis response • Rapid exit 	<p>Services:</p> <ul style="list-style-type: none"> • Direct Financial Assistance • Housing Stabilization Services <p>Goals:</p> <ul style="list-style-type: none"> • Prevent loss of housing • Housing stability 	<p>Services:</p> <ul style="list-style-type: none"> • Legal Representation • Tenant Support Services <p>Goals:</p> <ul style="list-style-type: none"> • Anti-displacement • Unit habitability 	<p>Services:</p> <ul style="list-style-type: none"> • Rental Subsidy Programs <p>Goals:</p> <ul style="list-style-type: none"> • Housing stability • Economic mobility
Experiencing homelessness	Imminent risk of homelessness	Non-imminent risk of homelessness	Future risk of homelessness



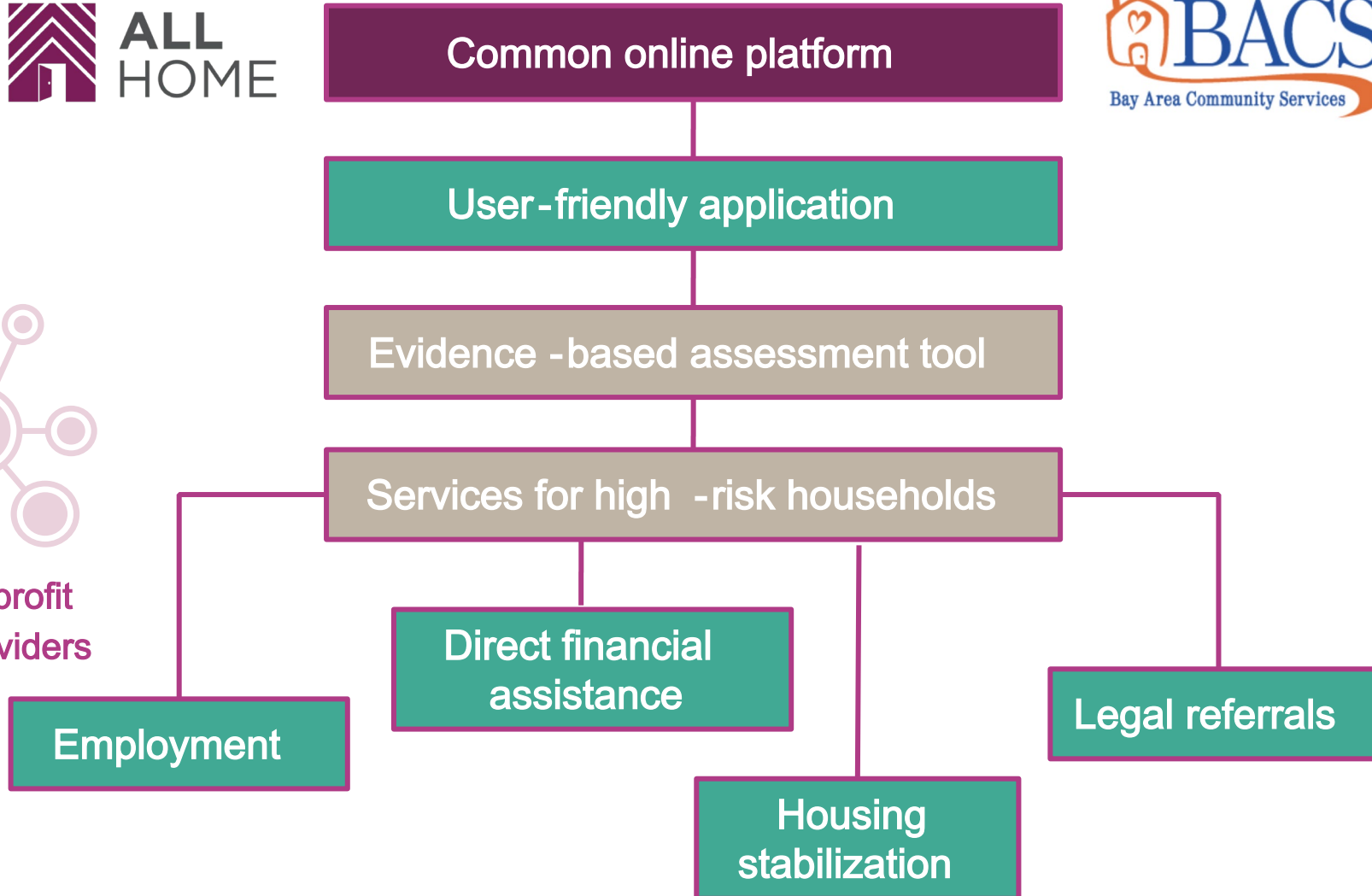
Targeted Homelessness Prevention

1. **Direct financial assistance** (e.g., rent, back rent, move-in costs, utilities, and more)
2. **Housing stabilization services**
3. **Employment connections**
4. **Legal assistance referrals**

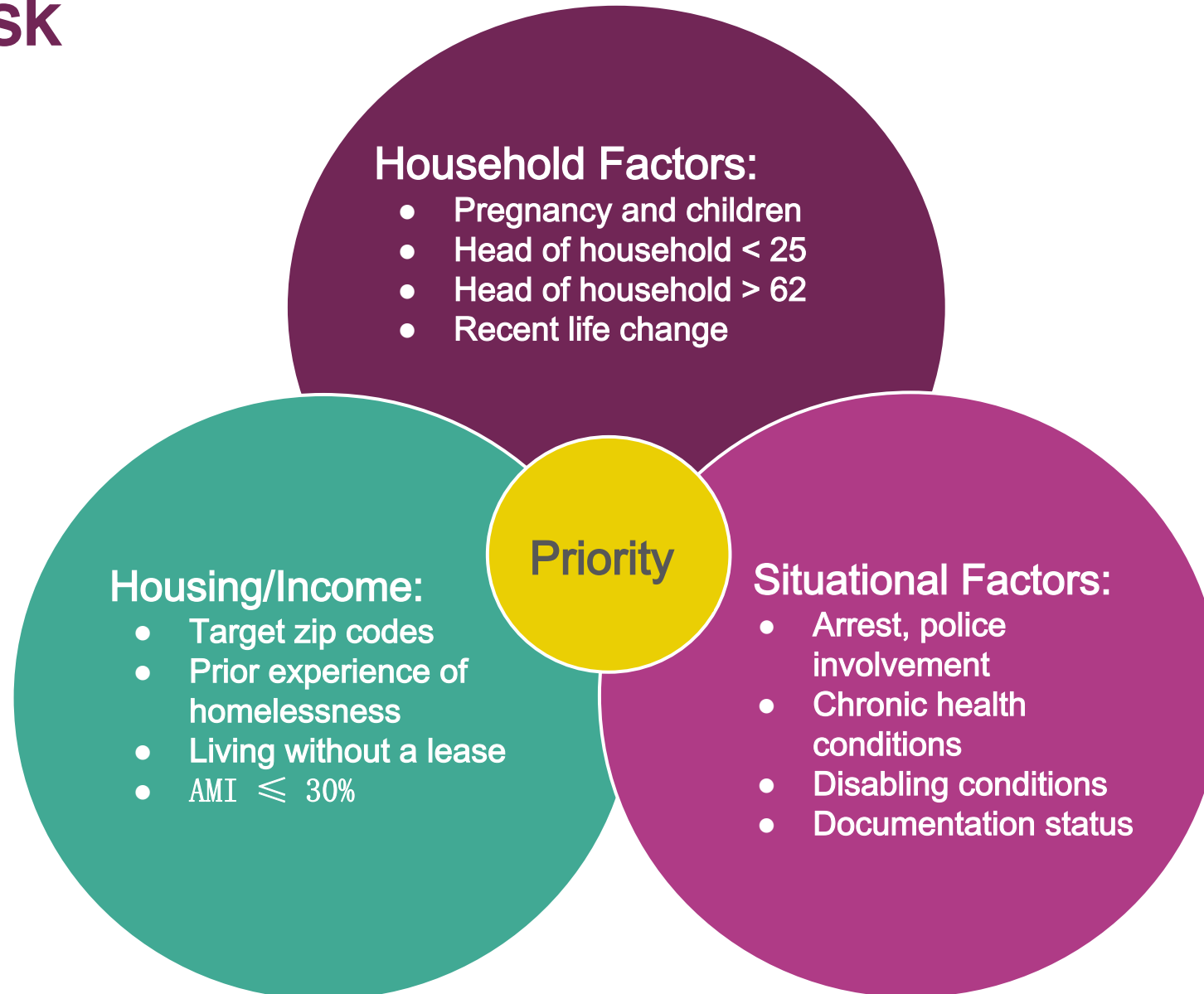
Evidence-based practices

- Prioritize highest need households without requiring demonstration of “sustainability”
- Flexible online documentation
- Expect lower than 100% “success” rate
- Coordinate with continuum of supports for people who do not meet risk threshold

Common Platform and Services Across Counties

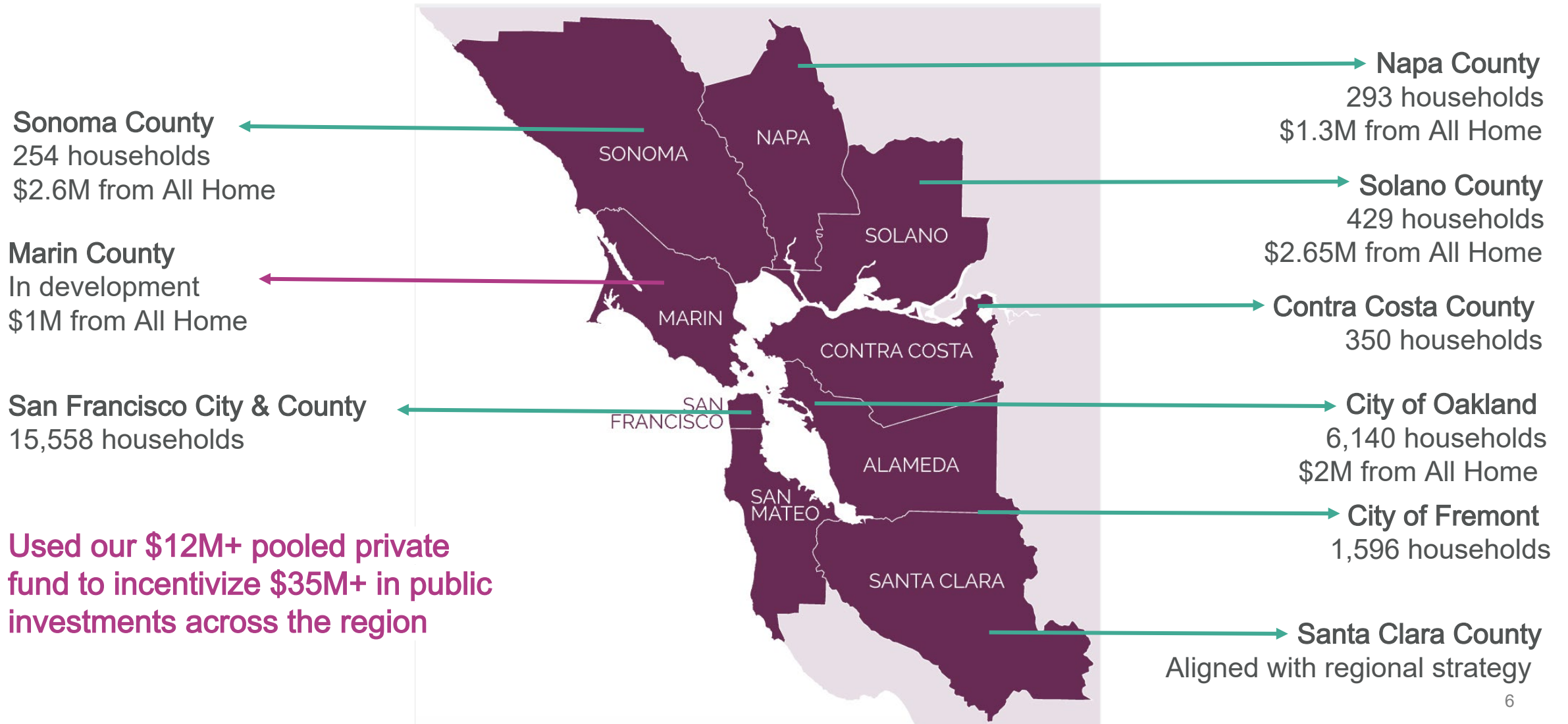


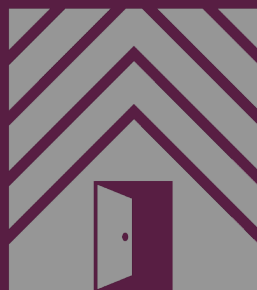
Common Regional Assessment Tool Identifies the Most At -Risk



Regional Network of Programs

More than 24,000 households served by our programs as of October 2025





ALL
HOME

www.allhomeca.org