

**Joint Center for Housing Studies
Harvard University**

**Addendum to Research Note N06-1: Hispanic Household Projections
Including Additional Tenure Projection Detail by Age and Broad
Family Type for Non-Hispanic White and Total Minority Households**

George S. Masnick and Eric S. Belsky

December 2006

N06-4

**Joint Center for Housing Studies
Harvard University**

**Addendum to Research Note N06-1: Hispanic Household Projections
Including Additional Tenure Projection Detail by Age and Broad
Family Type for Non-Hispanic White and Total Minority Households**

George S. Masnick and Eric S. Belsky

December 2006

N06-4

© by George S. Masnick and Eric S. Belsky. All rights reserved. Short sections of text, not to exceed two paragraphs, may be quoted without explicit permission provided that full credit, including © notice, is given to the source.

Any opinions expressed are those of the authors and not those of the Joint Center for Housing Studies of Harvard University or of any of the persons or organizations providing support to the Joint Center for Housing Studies.

© 2006 President and Fellows of Harvard College. All rights reserved. Short sections of text, not to exceed two paragraphs, may be quoted without explicit permission provided that full credit, including © notice, is given to the source.

Introduction

This addendum presents additional detail to the household projections released in Research Note N06-1¹. Hispanic households are split out from the total minority category, and greater demographic detail is provided to the tenure projections released as part of N06-1.

The last time that the Joint Center produced household projections that had full demographic detail including a separate set of Hispanic projections with a tenure breakdown by age of head was in 2000.² In 2004, when the Joint Center released a new set of household projections based on Interim Census Bureau population projections released that same year, Hispanic households were not split out from the total minority category and a tenure breakdown was not provided.³ Earlier this year when we released Research Note N06-1, which updated household projections incorporating modified 2004 Census Bureau Interim population projections to allow for 1.2 million net immigrants annually, once again Hispanics were included in a total minority category and not split out separately, and the tenure breakdown was only provided for total non-Hispanic white and total minority household projections without attention to age of head.

This paper compares these new 2006 Hispanic projections to the earlier 2000 Hispanic projections. It incorporates both the new population projections released by the Census in 2004 and our adjustments to it to reflect our higher immigration assumptions. A second difference in the new projections is the higher Hispanic counts in 2000 resulting from a re-benchmarking of the population as enumerated in the 2000 census. A third difference is due to new headship rate assumptions.

It is clear that most of the additional projected household growth from our higher immigration assumptions should accrue to Hispanic headed households. It is within this sub-

¹ See George S. Masnick and Eric S. Belsky, "Revised Interim Joint Center Household Projections Based Upon 1.2 Million Annual Net Immigrants," Joint Center for Housing Studies of Harvard University, Research Note N06-1 (March 2006).

² See George S. Masnick and Zhu Xiao Di, "Updating and Extending the Joint Center Household Projections Using New Census Bureau Population Projections," Joint Center for Housing Studies of Harvard University, Research Note N00-1 (October 2000). An augmented set of tables from these projections was made available in the Spring of 2002, and the projections were further discussed in George S. Masnick and Zhu Xiao Di, "Projections of U.S. Households by Race/Hispanic Origin, Age, Family Type, and Tenure to 2020: A Sensitivity Analysis," U.S. Department of Housing and Urban Development, *Issue Papers on Demographic Trends Important to Housing*, U.S. Department of Housing and Urban Development Office of Policy Development and Research (February 2003).

³ George S. Masnick, Eric S. Belsky, and Zhu Xiao Di, "The Impact of New Census Bureau Interim National Population Projections on Projected Household Growth in the United States," Joint Center for Housing Studies of Harvard University, Research Note N04-1 (June 2004).

group that the Census Bureau population projections of 2000 and 2004 had assumed net immigration to decline most severely, and it is among Hispanics that we believe the shortfall in projected assumed immigration to be the greatest. Indeed, we assume that the entire shortfall accrues to Hispanic households. While this may overstate the Hispanic change somewhat, we continue to believe that the Census consistently underestimates immigration, as a comparison of its own estimates to its actual count of foreign-born households in 2000 suggests.

While the Census Bureau's interim Hispanic population projections only increased projected immigration slightly between the 2000 and 2004 series, the benchmark numbers of Hispanics in the year 2000, upon which the 2004 projections were built, were changed significantly from their earlier numbers. The 2000 set of projections took off from 1995 benchmark estimates that proved, by 2000, to seriously underestimate the Hispanic population as counted in the 2000 census. Accordingly, the 2004 population projections included a higher Hispanic population count for 2000 – about 5 million more people than was estimated to be U.S. residents in the earlier projections. Therefore, when comparing our previous Hispanic household projections with those presented here, there are two major population factors that help account for the differences. The first is the higher 2000 benchmark population counts, and the second is the higher net immigration assumptions that we make above those that are part of the Census Bureau's 2004 interim series. Of the two, the higher 2000 benchmark number is the most important near-term factor in accounting for differences between our 2000 and 2006 Hispanic household projections. It is not until 2020 that the higher immigration assumptions we incorporate add a cumulative additional 5 million Hispanics to the resident population base, equaling the size of the increase from the re-benchmarked 2000 population.

A final difference in the two Hispanic household projection series lies in the headship rate assumptions. Our 2000 projections used cohort trended headship rates based upon trends observed between 1993 and 1998. By 2005, Hispanic headship rates as measured by the CPS had moved downward and more or less stabilized. Here we present household projections that hold headship rates constant at 2005 levels. Thus, the previous trended cohort headship rates in the 2000 projections result in future headship assumptions that differ from the values used in our new Hispanic household projections. Family headship rates are lower across all age groups in the present series, and non-family headship are higher for young adults and lower for older

adults. Before reporting on the new Hispanic household projections themselves, we discuss each of these three underlying factors in turn, starting with the 2000-benchmark population estimates.

Re-benchmarking to the 2000 Census

Figure 1 compares the estimated number of Hispanics in each age group in the year 2000 in each of the three population projections – the 2000 Census Bureau projections based on updated 1990 census data, the 2004 Census Bureau projections which were re-benchmarked to the 2000 census, and the 2006 Joint Center projections used here that allow for 1.2 million net annual immigrants. Note the large difference in Hispanic counts, especially among those in the 20s, when the estimates were re-benchmarked to the 2000 census. The population added to the 2000 estimates by re-benchmarking will have a significant impact on projected household growth as these persons age, no matter what are the assumptions about future immigration trends. Note also that the 2006 Joint Center assumptions for the 2000 Hispanic population by age is not noticeably different from the re-benchmarked 2004 Census Bureau estimates for 2000.

Figure 2 shows the differences among the three projections in the Hispanic population in the year 2020. By this date, the additional Hispanic population implied by the higher immigration assumptions in our 2006 projections is shown to roughly equal the additional population contribution from re-benchmarking. By 2020, the main impact of the higher immigration assumptions is found in slightly younger age groups (20s and 30s) compared to the impact of the re-benchmarking (30s and 40s).

Figure 1

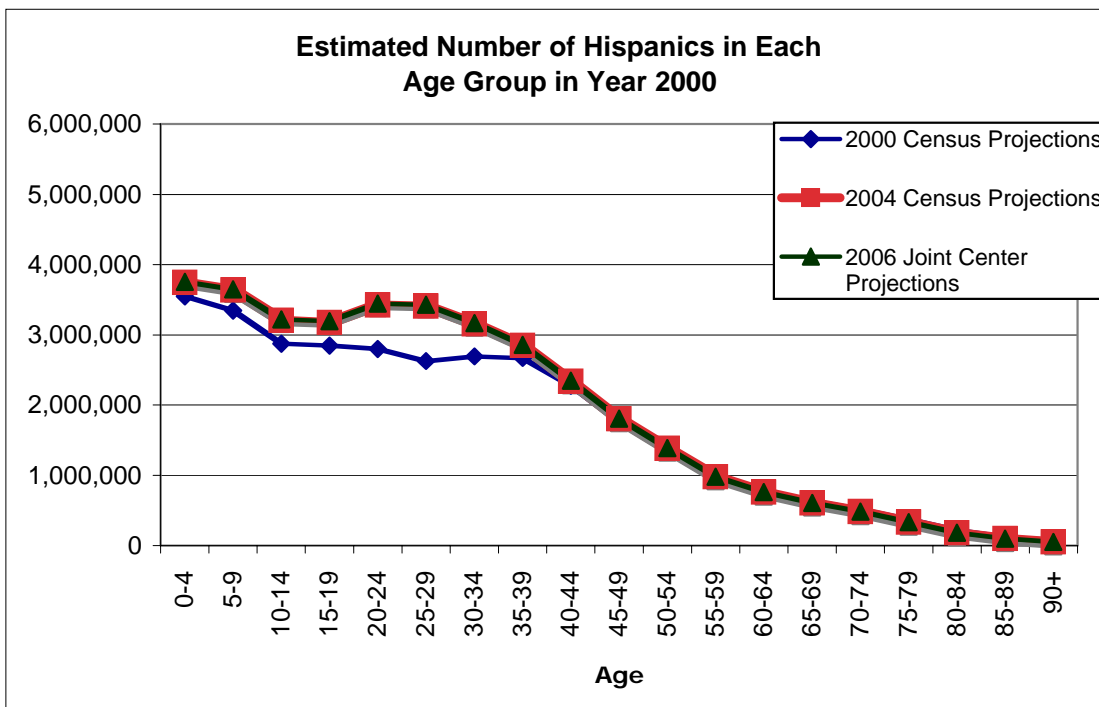
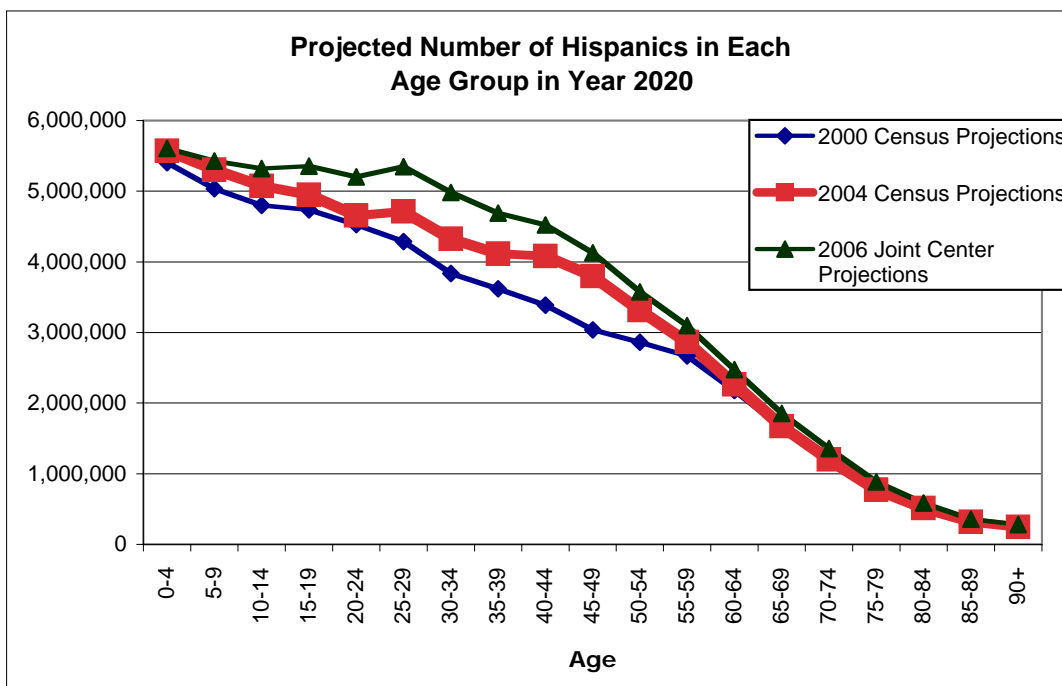


Figure 2



Immigration Assumptions

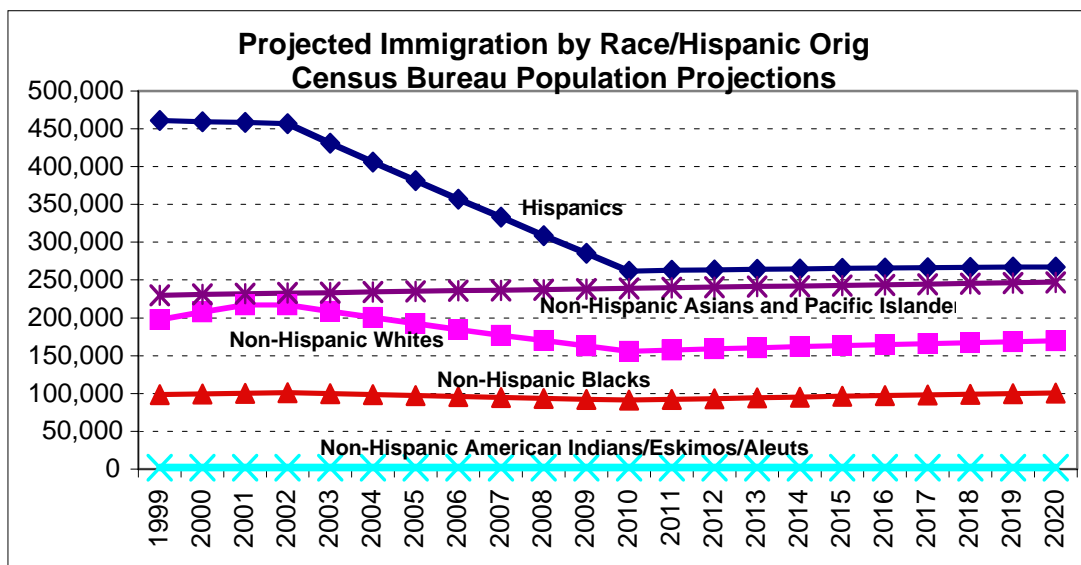
In Research Note N06-1 we argued that the future immigration assumptions contained in both the Census Bureau's 2000 and 2004 population projections were likely to undershoot actual future trends. Their assumption of a decline in net immigration was partly justified on the grounds that the large jump in applications to sponsor immediate relatives from immigrants legalized by the Immigration Reform and Control Act of 1986 (IRCA) would quickly peter out. In their own words, the Census demographers reasoned:

A rapid increase in the level of migration during the 1990's occurred largely because millions of people legalized in 1987 and 1988 under the Immigration Reform and Control Act (IRCA) of 1986, were becoming U.S. citizens in increasing numbers. As they became citizens, they could sponsor the legal immigration of immediate relatives without being subject to numerical limits. We deemed this flow, composed largely of people from Mexico and Central America, to be somewhat transitory. Hence, migration from this source is projected to reach a peak early in the decade of 2000 to 2010, then gradually decline to zero as the supply of potential reunifications is exhausted. In particular, legal migration from Mexico is assumed to return to the levels of the early 1990's by 2010.⁴

As a consequence of this reasoning, it was Hispanic immigration levels that were trended downward most dramatically (Figure 3). In Research Note N06-1 we assumed that future net immigration held at 1.2 million annually, with the split being 1.0 million minority and 200,000 non-Hispanic white. Figure 3 suggests that most, if not all, of the minority adjustment should be among Hispanics. In our revised population projections we do assume that all of the proposed minority immigration adjustment is among Hispanics.

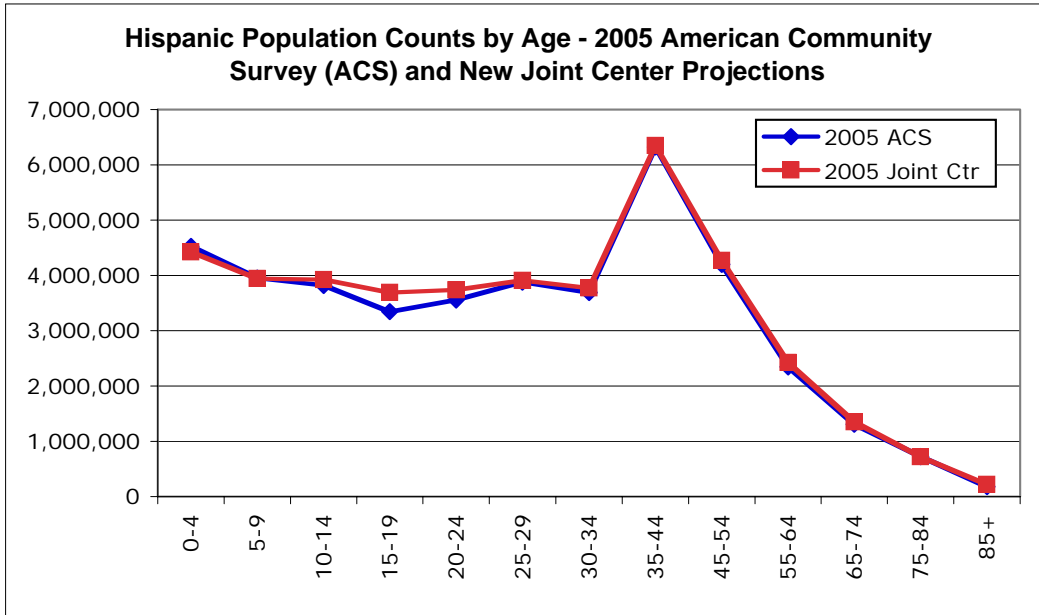
⁴ Frederick W. Hollmann, Tammany J. Mulder and Jeffery E. Kallan, *Methodology and Assumptions for the Population Projections of the United States: 1999 to 2100* Population Division Working Paper No. 38 (January 2000) p.17.

Figure 3



One way of testing the validity of this assumption is to compare our 2005 projections with the 2005 American Community Survey (ACS) counts. The 2005 ACS is weighted by 2005 Census Bureau population estimates, which we argued in Research Note N06-1 likely underestimated net immigration. That weighting was informed by ACS net immigration estimates that indicated a significant decline in the growth of the foreign born population in 2003 and 2004. Figure 4 compares the age distribution of Hispanics in 2005 from both our revised population projections and the 2005 ACS. As expected, our projections are higher, but only slightly so, and mainly in the late teens and early 20s where ACS undercounts of Hispanic immigration are expected to be the greatest.

Figure 4



If the 2005 weights for the ACS had included higher net immigration estimates for 2003 and 2004, the gap between the ACS and our estimates would narrow.⁵ The history of estimated net immigration weights is one of underweighting when compared to decennial census counts.

Headship Rate Assumptions

Hispanic family, non-family and total headship rates used in our present household projections differ from those used in the Hispanic household projections released in 2000. The differences are evident in Figures 5-7, which contrast projected headship rates for the year 2020 used in each series. The lower family headship rates (Figure 5) across all age groups in the present (2006) series are the result of three trends that took place during the past decade. First, high immigration numbers would tend to depress the rate of family household formation if immigrants are either unmarried or arrive without their families. Second, continued secular trends in delayed marriage and family formation have affected Hispanics and non-Hispanics alike. Third, rising housing costs during the past decade, and especially during the past five

⁵ According to the 2005 ACS, total foreign-born numbers increased by about 1.4 million between 2004 and 2005, more than double the annual ACS estimated increases during the previous two years. This higher estimate is expected to be incorporated into the Census Bureau's 2006 population weights.

years, have made independent household formation more difficult. More doubling up of unrelated adults and higher rates of multi-generational household formation are especially likely in the high housing cost states on the east and west coasts where many Hispanics live.

Non-family headship rates are higher for younger adults and lower for older adults in our present projections (Figure 6). The higher Hispanic immigration levels in our present series and higher co-habitation among young adults would naturally boost non-family household formation, along with greater doubling-up of unrelated individuals in tight housing markets, and there does appear to be a slight shift from family to non-family household formation among young adults. The decline in headship rates among older Hispanics is consistent with the recent trends in housing costs. When the projected family and non-family headship rates are added to produce a total headship rate (Figure 7), the 2006 series shows broadly lower overall rates of Hispanic household formation compared to our 2000 assumptions. Thus, the higher population numbers driving our present Hispanic household projections will be partly offset by lower headship rates when comparing the present series to the projections released in 2000.

Figure 5

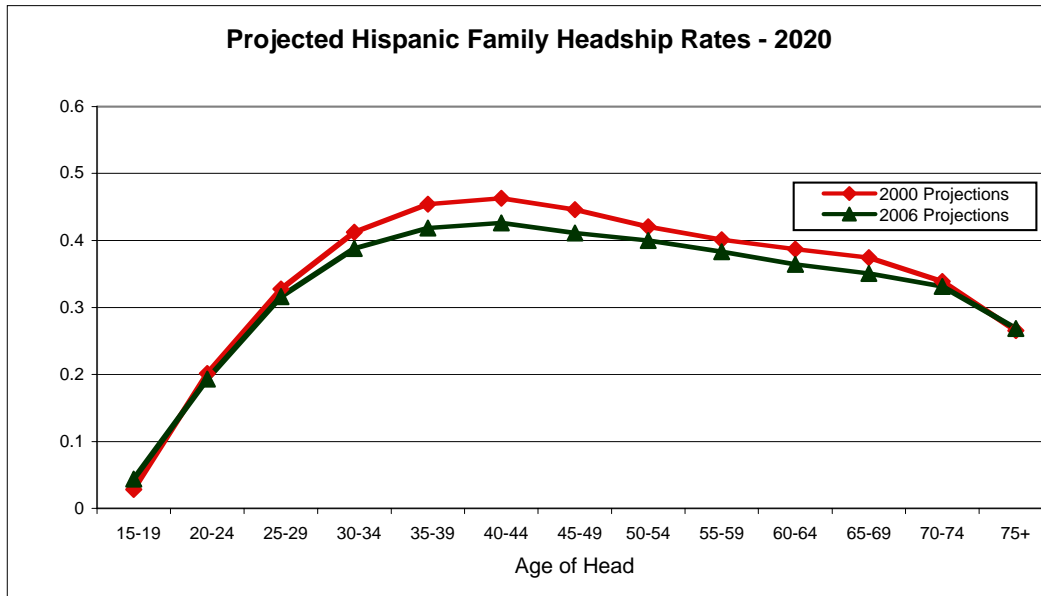


Figure 6

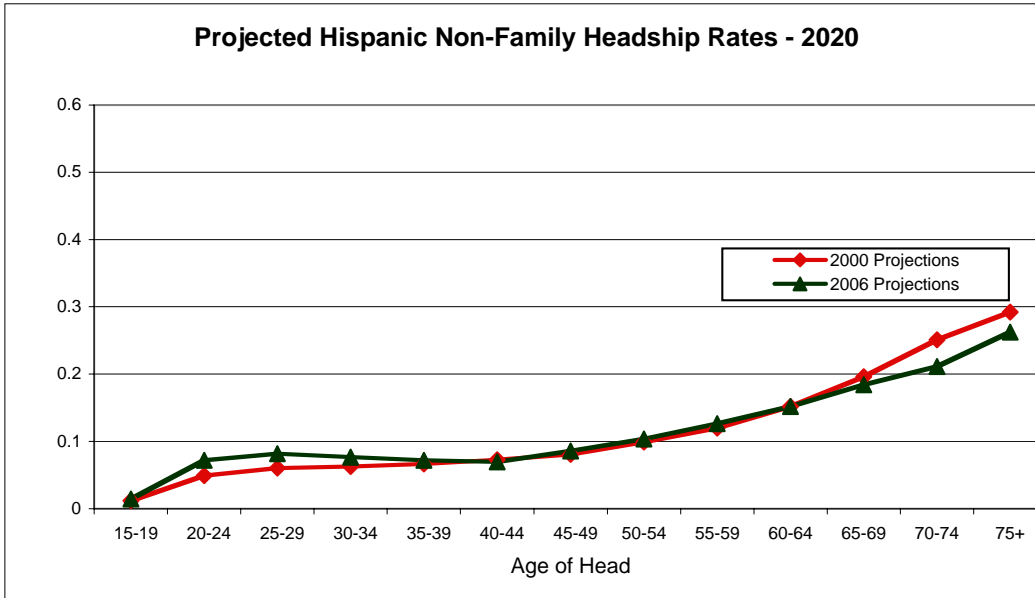
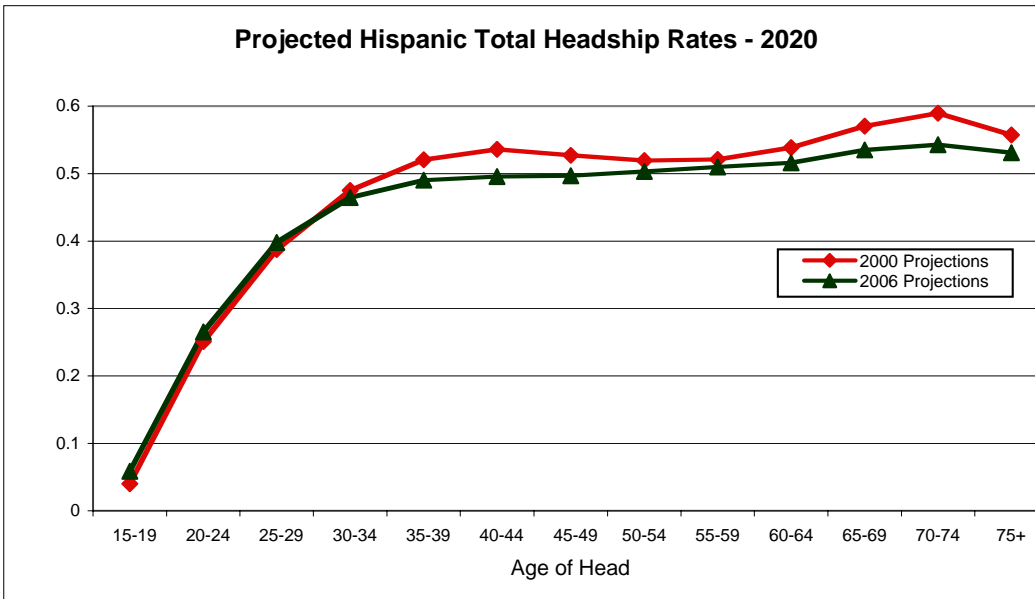


Figure 7



New Hispanic Household Projections by Age and Family Type

Under revised assumptions about benchmark numbers, immigration levels, and headship rates, the present Hispanic household projections show significantly higher numbers than the previous projections. The difference between the two series is over 500,000 households in 2000

and grows to almost 3.5 million additional households by 2020 (Figure 8). The difference in 2000 is positive for the younger age groups, driven by the higher immigration assumptions, and lower in the older age groups, driven by the lower headship rates. By 2020, however, the present projections show higher Hispanic household numbers across all age groups as the higher immigration difference cumulates as immigrants age (Figure 9). The two Hispanic household projection series are summarized in Table 1.

Figure 8

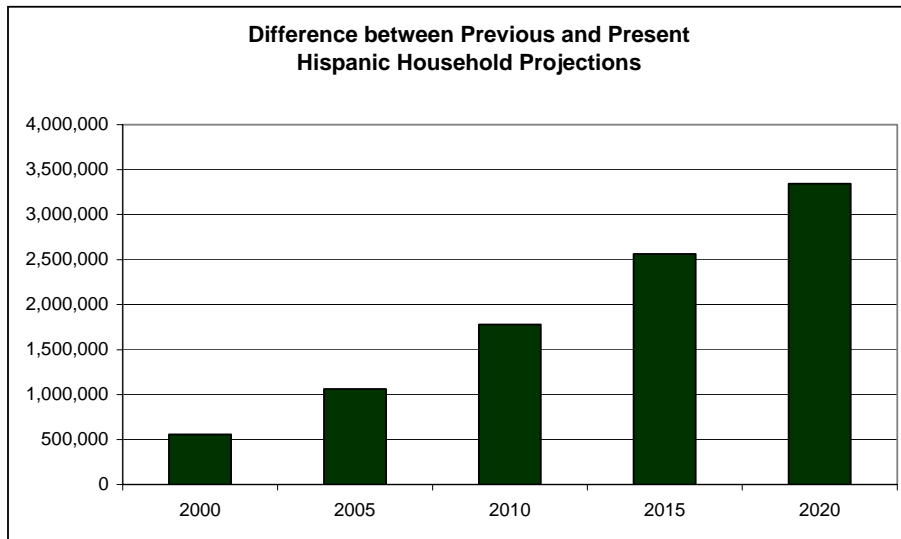


Figure 9

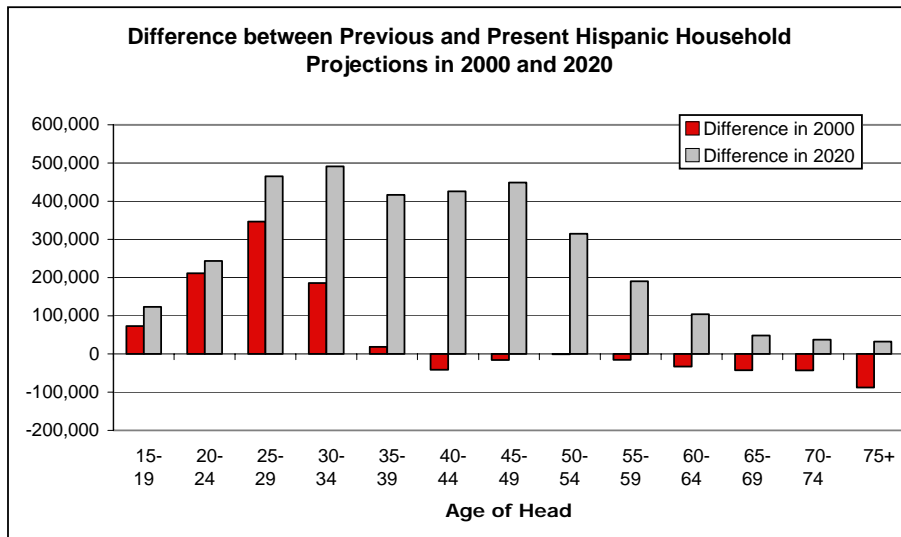


Table 1: Hispanic Headed Households

| 2000 Projections | | | | | |
|---------------------------------|-----------------|---------------------|----------------|---------------------|--------------------|
| | Family Total | Non-Family Total | Grand Total | Total Population | Average HH Size |
| 2000 | 7,530,263 | 1,849,999 | 9,380,262 | 32,479,000 | 3.5 |
| 2001 | 7,814,567 | 1,924,773 | 9,739,340 | 33,616,000 | 3.5 |
| 2002 | 8,101,276 | 2,000,734 | 10,102,010 | 34,767,000 | 3.4 |
| 2003 | 8,386,968 | 2,077,487 | 10,464,455 | 35,917,000 | 3.4 |
| 2004 | 8,668,805 | 2,155,167 | 10,823,972 | 37,060,000 | 3.4 |
| 2005 | 8,950,812 | 2,234,662 | 11,185,474 | 38,189,000 | 3.4 |
| 2006 | 9,229,343 | 2,315,788 | 11,545,131 | 39,307,000 | 3.4 |
| 2007 | 9,505,492 | 2,397,767 | 11,903,259 | 40,419,000 | 3.4 |
| 2008 | 9,778,509 | 2,480,864 | 12,259,373 | 41,515,000 | 3.4 |
| 2009 | 10,048,460 | 2,563,897 | 12,612,357 | 42,607,000 | 3.4 |
| 2010 | 10,321,398 | 2,649,619 | 12,971,017 | 43,688,000 | 3.4 |
| 2011 | 10,598,444 | 2,738,151 | 13,336,595 | 44,771,000 | 3.4 |
| 2012 | 10,883,528 | 2,829,841 | 13,713,369 | 45,874,000 | 3.4 |
| 2013 | 11,166,725 | 2,923,374 | 14,090,099 | 46,987,000 | 3.3 |
| 2014 | 11,450,836 | 3,017,291 | 14,468,127 | 48,112,000 | 3.3 |
| 2015 | 11,741,906 | 3,115,239 | 14,857,145 | 49,255,000 | 3.3 |
| 2016 | 12,035,142 | 3,214,351 | 15,249,493 | 50,408,000 | 3.3 |
| 2017 | 12,336,799 | 3,316,599 | 15,653,398 | 51,576,000 | 3.3 |
| 2018 | 12,637,947 | 3,421,493 | 16,059,440 | 52,759,000 | 3.3 |
| 2019 | 12,940,412 | 3,526,918 | 16,467,330 | 53,949,000 | 3.3 |
| 2020 | 13,250,243 | 3,636,510 | 16,886,753 | 55,156,000 | 3.3 |
| Revised 2006 Projections | | | | | |
| | Family Total | Non-Family Total | Grand Total | Total Population | Average HH Size |
| 2000 | 7,818,819 | 2,117,349 | 9,936,168 | 35,764,550 | 3.6 |
| 2001 | 8,173,276 | 2,215,125 | 10,388,401 | 37,129,337 | 3.6 |
| 2002 | 8,528,453 | 2,314,103 | 10,842,556 | 38,501,190 | 3.6 |
| 2003 | 8,888,406 | 2,415,655 | 11,304,061 | 39,899,646 | 3.5 |
| 2004 | 9,250,189 | 2,518,748 | 11,768,937 | 41,314,187 | 3.5 |
| 2005 | 9,622,408 | 2,626,196 | 12,248,604 | 42,744,300 | 3.5 |
| 2006 | 9,999,101 | 2,735,617 | 12,734,718 | 44,187,026 | 3.5 |
| 2007 | 10,378,628 | 2,847,680 | 13,226,308 | 45,640,056 | 3.5 |
| 2008 | 10,761,872 | 2,963,392 | 13,725,264 | 47,103,197 | 3.4 |
| 2009 | 11,147,255 | 3,082,405 | 14,229,660 | 48,575,826 | 3.4 |
| 2010 | 11,542,054 | 3,207,203 | 14,749,257 | 50,056,991 | 3.4 |
| 2011 | 11,939,459 | 3,333,205 | 15,272,664 | 51,531,550 | 3.4 |
| 2012 | 12,338,937 | 3,461,598 | 15,800,535 | 53,011,718 | 3.4 |
| 2013 | 12,740,737 | 3,593,204 | 16,333,941 | 54,497,142 | 3.3 |
| 2014 | 13,143,672 | 3,727,597 | 16,871,269 | 55,987,388 | 3.3 |
| 2015 | 13,552,436 | 3,866,998 | 17,419,434 | 57,482,194 | 3.3 |
| 2016 | 13,966,078 | 4,007,648 | 17,973,726 | 58,981,613 | 3.3 |
| 2017 | 14,379,493 | 4,149,825 | 18,529,318 | 60,486,162 | 3.3 |
| 2018 | 14,793,621 | 4,295,093 | 19,088,714 | 61,996,324 | 3.3 |
| 2019 | 15,209,497 | 4,443,845 | 19,653,342 | 63,512,974 | 3.2 |
| 2020 | 15,630,554 | 4,598,914 | 20,229,468 | 65,036,570 | 3.2 |

Higher Hispanic household growth results in a growing share of total projected households that are Hispanic (Figure 10). Starting with less than 10 percent of total households that are Hispanic in 2000, the share rises to almost 15 percent by 2020. Hispanics constitute 38 percent of all minority households in 2005 and are projected to claim 43 percent of the minority share by 2020. Because Hispanics have a younger age structure than the total population, household shares that are Hispanic for younger households in 2000 are well above the 10 percent average and well above the 15 percent average in 2020 (Figure 11). The slight bulge in the 2020 household shares that are Hispanic among householders in their late 40s and early 50s is because the smaller (and largely non-Hispanic white) baby bust cohorts are in these age groups in 2020.

Figure 10

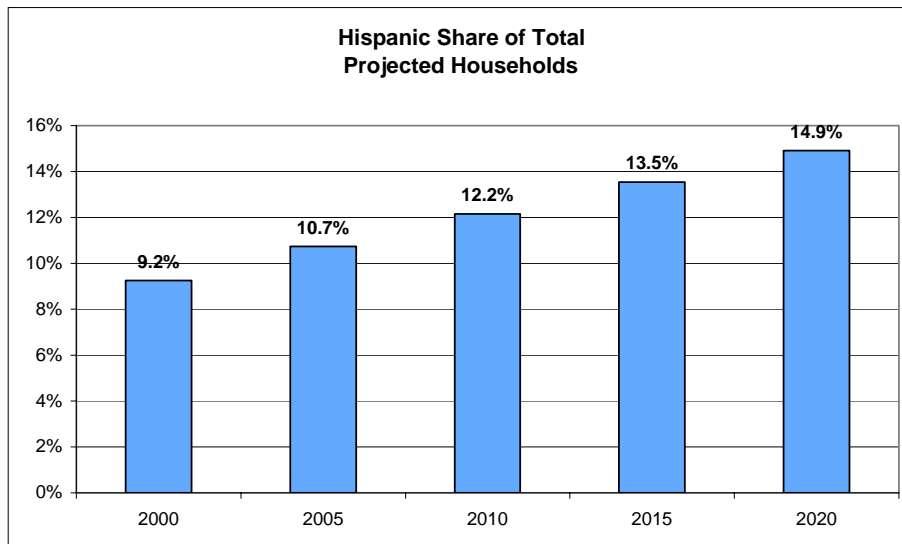
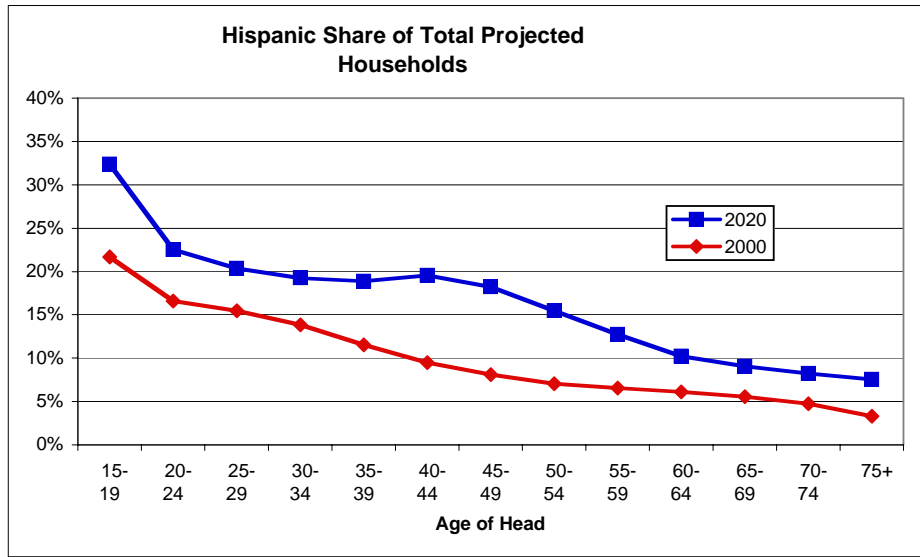


Figure 11



The growing share of all households that are headed by Hispanics will cause a gradual shift in household types to include more households with children less than 18 years of age present in the household (in both married couple headed and single parent households). There will also be a shift toward more “other family” households, which include households with only adult children present and households where siblings, parents and other relatives of the head are present. On the non-family side, Hispanics have a lower share of single person headed households at every age. Among younger household heads, fewer Hispanics live only with other non-relatives because living with relatives is a more popular choice. These shifts in shares by household type can be further studied in Table 2 where the family-type shares for non-Hispanic white and Hispanic headed households are compared. Since our projections hold these shares constant at 2005 levels, there are no trends in this breakdown by family type for future years. Detailed projections of Hispanic family type by age of head can be found in the last set of panels in Appendix A. (Appendix A also reproduces these projections for total households, for non-Hispanic white households, and for total minority households that were released as part of Research Note N06-1).

**Table 2: Share of Total Households in Each Age Group of a Particular Family Type:
Non-Hispanic Whites vs. Hispanics**

| | NH White | Hispanic | NH White | Hispanic | NH White | Hispanic |
|-------|------------------------|------------------------|--------------------------|--------------------------|---------------------|---------------------|
| | Married No Kids <18 | Married No Kids <18 | Married With Kids <18 | Married With Kids <18 | Single Parent | Single Parent |
| Age | | | | | | |
| 15-19 | 3.7% | 3.6% | 3.4% | 10.7% | 11.1% | 10.7% |
| 20-24 | 11.9% | 8.1% | 14.6% | 24.2% | 15.6% | 21.7% |
| 25-29 | 16.8% | 8.0% | 30.0% | 41.4% | 12.2% | 19.9% |
| 30-34 | 12.2% | 8.4% | 45.4% | 52.1% | 12.3% | 20.5% |
| 35-39 | 10.4% | 5.3% | 51.5% | 51.6% | 13.3% | 21.5% |
| 40-44 | 14.3% | 11.6% | 48.5% | 49.8% | 12.3% | 19.0% |
| 45-49 | 26.5% | 17.3% | 35.0% | 39.1% | 8.9% | 13.6% |
| 50-54 | 44.3% | 31.3% | 17.2% | 24.3% | 3.9% | 10.2% |
| 55-59 | 53.8% | 43.4% | 6.3% | 10.3% | 1.4% | 4.4% |
| 60-64 | 58.0% | 48.8% | 2.5% | 3.4% | 0.4% | 1.0% |
| 65-69 | 56.9% | 48.4% | 1.0% | 2.6% | 0.5% | 0.9% |
| 70-74 | 50.7% | 45.8% | 0.9% | 1.5% | 0.0% | 0.5% |
| 75+ | 34.3% | 33.8% | 0.2% | 0.5% | 0.1% | 0.6% |
| Total | 31.8% | 17.9% | 22.4% | 34.4% | 6.6% | 15.1% |
| | Other Family | Other Family | Single Person | Single Person | Other Non-Family | Other Non-Family |
| Age | | | | | | |
| 15-19 | 36.5% | 49.7% | 17.5% | 6.3% | 27.7% | 19.0% |
| 20-24 | 6.9% | 18.8% | 23.4% | 13.6% | 27.6% | 13.7% |
| 25-29 | 4.0% | 8.3% | 22.7% | 12.3% | 14.5% | 10.1% |
| 30-34 | 1.9% | 4.3% | 20.4% | 9.9% | 7.8% | 4.8% |
| 35-39 | 2.1% | 5.4% | 18.1% | 10.1% | 4.6% | 6.1% |
| 40-44 | 3.5% | 5.9% | 16.7% | 9.5% | 4.7% | 4.3% |
| 45-49 | 5.4% | 12.2% | 20.0% | 14.1% | 4.2% | 3.6% |
| 50-54 | 7.2% | 13.1% | 23.6% | 17.1% | 3.8% | 3.9% |
| 55-59 | 7.9% | 17.1% | 26.9% | 21.2% | 3.7% | 3.6% |
| 60-64 | 6.7% | 19.0% | 29.4% | 24.5% | 3.0% | 3.4% |
| 65-69 | 6.9% | 13.1% | 32.4% | 33.0% | 2.2% | 2.1% |
| 70-74 | 7.0% | 13.3% | 40.1% | 38.6% | 1.2% | 0.3% |
| 75+ | 8.4% | 15.7% | 55.2% | 47.8% | 1.8% | 1.6% |
| Total | 5.8% | 10.9% | 27.6% | 15.7% | 5.8% | 5.9% |

Source: Joint Center tabulation of 2005 Current Population Survey

Hispanic Household Projections by Tenure

In Research Note N06-1 we discussed the reasons for not holding homeownership rates constant as we did for headship rates, and also discussed the high degree of uncertainty about future cohort trends in homeownership rates. These observations are especially true for trends in Hispanic homeownership. In light of this discussion, we chose also to apply the middle series homeownership rate trends from our 2000 Hispanic household projections to the present set of Hispanic household projections. We adjusted the previous rates to bring them in line with Hispanic annual homeownership rates estimated for 2000 by the Housing Vacancy Survey (HVS) by adding 0.04 to the rate in every year. This adjustment was necessary because our 2000 projections started in 1995 and followed a “middle cohort trend” which averaged our “high cohort trend” and “low cohort trend” series. The actual homeownership rate trend between 1995 and 2000 was closer to the high cohort trend series, and thus the need for the adjustment and another indication of the difficulties of making these sorts of projections. The adjusted projected 2005 Hispanic homeownership rate is very close to the 2005 HVS annual estimate (49.0 vs. 49.5). Because our projections are based upon boosted levels of immigration, even above Census Bureau estimates between 2000 and 2005, it is to be expected that homeownership rates should be slightly lower with more recent immigrants in the population base.

Homeownership rate differences between non-Hispanic whites and Hispanics remain significant throughout the projection period.⁶ Figure 12 contrasts projected homeownership rates for Hispanics and non-Hispanic whites by age for 2015. The ascendancy of Hispanic owner household formation relative to non-Hispanic white discussed below occurs in spite of persistent lower homeownership rates of Hispanics.

Figure 13 presents the trend in Hispanic shares of projected total number of owners and renters, and Table 3 presents the projected Hispanic households of each type, annual growth in households, as well as the implied homeownership rate trend. Hispanics are projected to add over 300,000 owners and almost 200,000 renters annually in the decade to come. Hispanics are projected to increase their share of all owner households in the U.S. from 7.6% in 2005 to 11.4% in 2020. The share of renter households that are Hispanic will go from 17.4% to 23.5%.

⁶ For a discussion of geographic variation in Hispanic/non-Hispanic white homeownership rate gaps see George S. Masnick, “Homeownership Rate Differences Between Hispanics and Non-Hispanic Whites: Regional Variation at the County Level,” U.S. Department of Housing and Urban Development, Office of Policy Development and Research, March 2006.

Figure 12

**Projected Homeownership Rate:
in 2015**

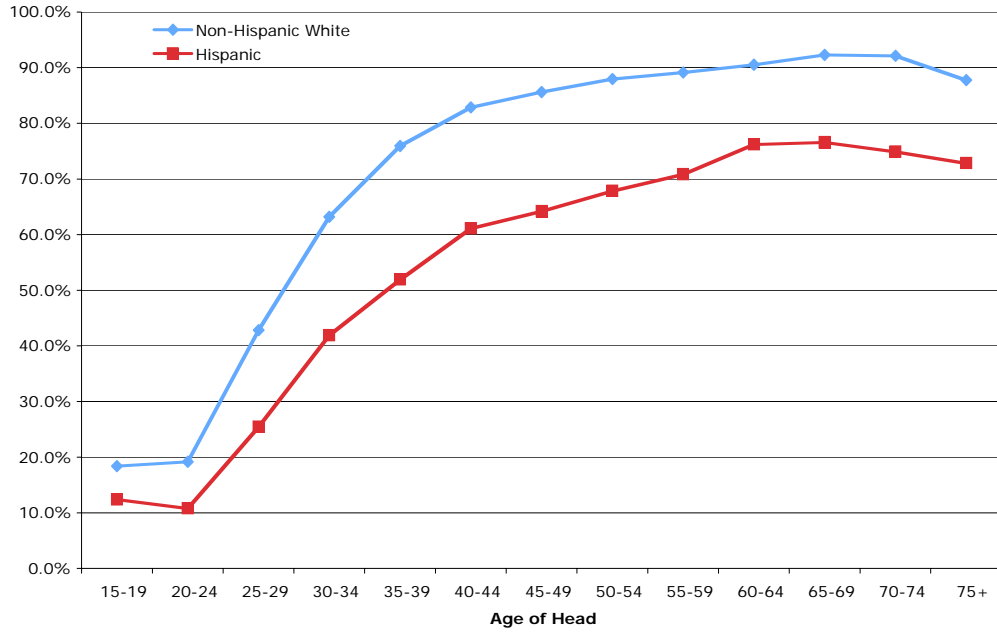


Figure 13

**Projections Show Steady Growth in Hispanic Share
Among both Owners and Renters**

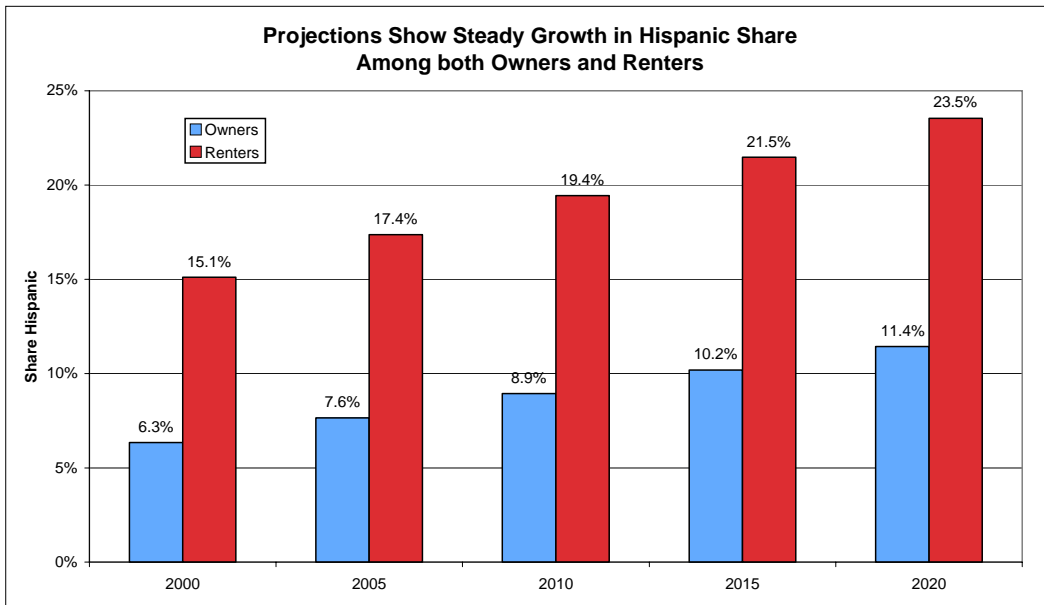


Table 3: Hispanic Household Projections by Tenure

| | Total | Owners | Renters | Projected HO Rate |
|----------------------|------------|------------|-----------|-------------------|
| 2000 | 9,936,168 | 4,594,871 | 5,341,297 | 46.2% |
| 2001 | 10,388,401 | 4,857,947 | 5,530,454 | 46.8% |
| 2002 | 10,842,556 | 5,126,997 | 5,715,559 | 47.3% |
| 2003 | 11,304,061 | 5,406,011 | 5,898,050 | 47.8% |
| 2004 | 11,768,937 | 5,693,449 | 6,075,488 | 48.4% |
| 2005 | 12,248,604 | 5,996,550 | 6,252,054 | 49.0% |
| 2006 | 12,734,718 | 6,298,409 | 6,436,309 | 49.5% |
| 2007 | 13,226,308 | 6,606,428 | 6,619,880 | 49.9% |
| 2008 | 13,725,264 | 6,921,969 | 6,803,295 | 50.4% |
| 2009 | 14,229,660 | 7,243,929 | 6,985,731 | 50.9% |
| 2010 | 14,749,257 | 7,579,855 | 7,169,402 | 51.4% |
| 2011 | 15,272,664 | 7,910,226 | 7,362,438 | 51.8% |
| 2012 | 15,800,535 | 8,246,338 | 7,554,197 | 52.2% |
| 2013 | 16,333,941 | 8,589,388 | 7,744,553 | 52.6% |
| 2014 | 16,871,269 | 8,938,446 | 7,932,823 | 53.0% |
| 2015 | 17,419,434 | 9,300,683 | 8,118,751 | 53.4% |
| 2016 | 17,973,726 | 9,659,552 | 8,314,174 | 53.7% |
| 2017 | 18,529,318 | 10,023,305 | 8,506,013 | 54.1% |
| 2018 | 19,088,714 | 10,393,494 | 8,695,220 | 54.4% |
| 2019 | 19,653,342 | 10,769,376 | 8,883,966 | 54.8% |
| 2020 | 20,229,468 | 11,157,527 | 9,071,941 | 55.2% |
| Annual Growth | | | | |
| | Total | Owners | Renters | |
| 2000-01 | 452,233 | 263,076 | 189,157 | |
| 2001-02 | 454,155 | 269,050 | 185,105 | |
| 2002-03 | 461,505 | 279,013 | 182,492 | |
| 2003-04 | 464,876 | 287,438 | 177,438 | |
| 2004-05 | 479,667 | 303,101 | 176,566 | |
| 2005-06 | 486,114 | 301,859 | 184,255 | |
| 2006-07 | 491,590 | 308,020 | 183,570 | |
| 2007-08 | 498,956 | 315,540 | 183,416 | |
| 2008-09 | 504,396 | 321,960 | 182,436 | |
| 2009-10 | 519,597 | 335,926 | 183,671 | |
| 2010-11 | 523,407 | 330,371 | 193,036 | |
| 2011-12 | 527,871 | 336,112 | 191,759 | |
| 2012-13 | 533,406 | 343,050 | 190,356 | |
| 2013-14 | 537,328 | 349,058 | 188,270 | |
| 2014-15 | 548,165 | 362,237 | 185,928 | |
| 2015-16 | 554,292 | 358,869 | 195,423 | |
| 2016-17 | 555,592 | 363,753 | 191,839 | |
| 2017-18 | 559,396 | 370,190 | 189,206 | |
| 2018-19 | 564,628 | 375,881 | 188,747 | |
| 2019-20 | 576,126 | 388,152 | 187,974 | |

Figures 14-17 compare the projected changes in the number of owner and renter households over the next decade for non-Hispanic whites and Hispanics by age of head.⁷ In Figure 14 it can be seen that the projected 2015 counts reflect fewer non-Hispanic white owners in the late 30s and 40s because of the aging of the smaller baby bust cohorts into these age groups, while the aging of baby boomers greatly increases owner households with heads between the ages of 50 and 70. The net effect for non-Hispanic whites is to modulate the total gain in owners. Hispanics show an increase in projected owner households across all age groups (Figure 15) and the cumulative effect is to register Hispanic owner gains well above their 2005 totals. Nationwide, Hispanics accounted for less than 8 percent of total owners in 2005, but are projected to account for over 25 percent of owner growth 2005-2015.

On the renter side, differences between non-Hispanic whites and Hispanics are even more extreme. Figure 16 shows a net loss of renter households among whites between 2005 and 2015 of about 1.5 million, while Figure 17 shows steady gains in renters for Hispanics of almost 1.9 million over the next decade. The detailed tenure projections by age and broad family type are presented in Appendix B.

⁷ The remaining minority category can only be obtained as a residual because of the categories released in the Census Bureau's most recent population projections. Since it lumps Asians, Blacks, and Native Americans and Pacific Islanders together in one category, we do not present this residual because of its lack of analytical significance.

Figure 14

**Number of Owner Households
Non-Hispanic White**

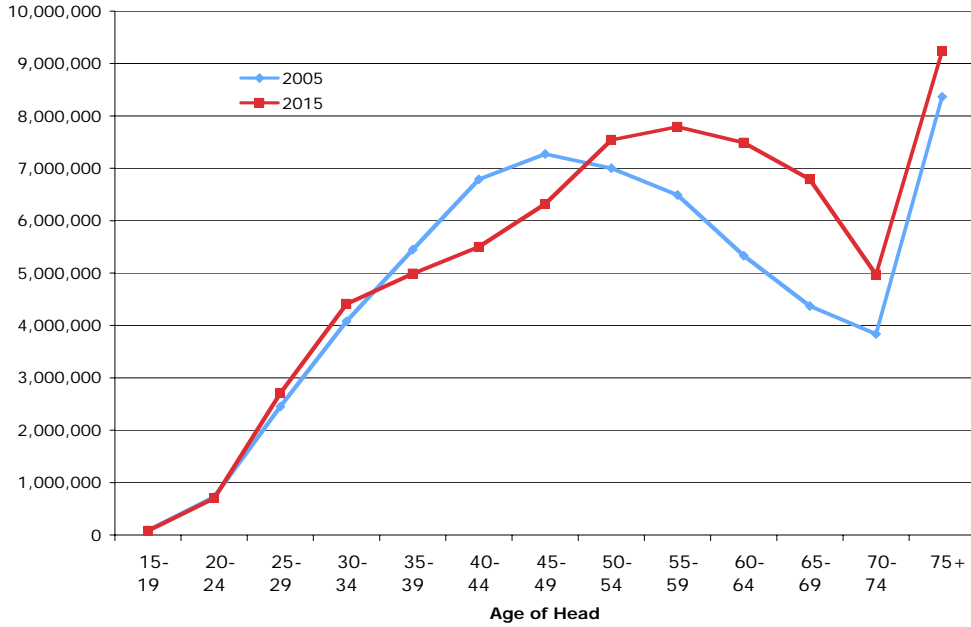


Figure 15

**Number of Owner Households
Hispanic**

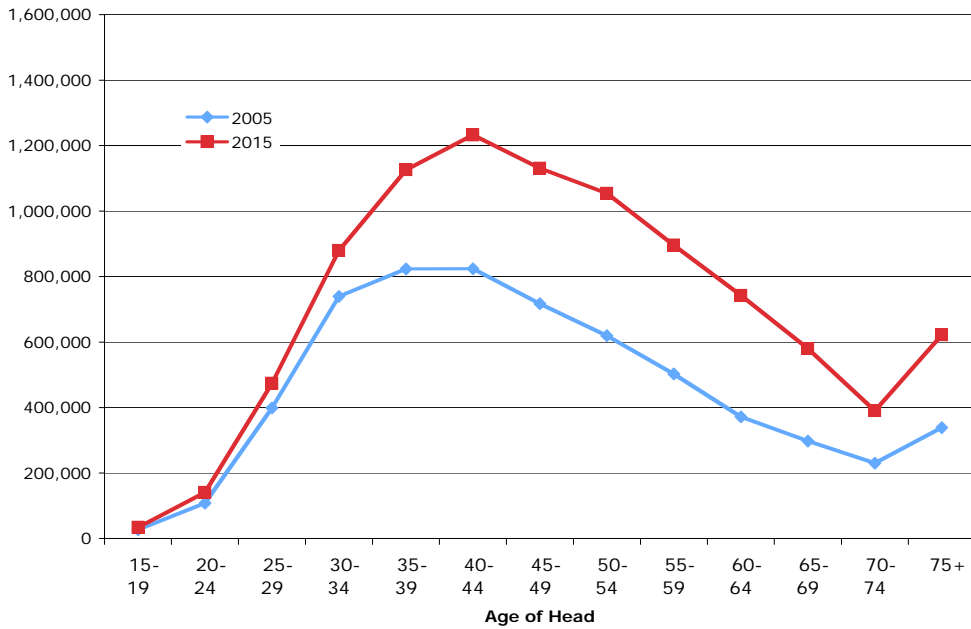


Figure 16

**Number of Renter Households
Non-Hispanic White**

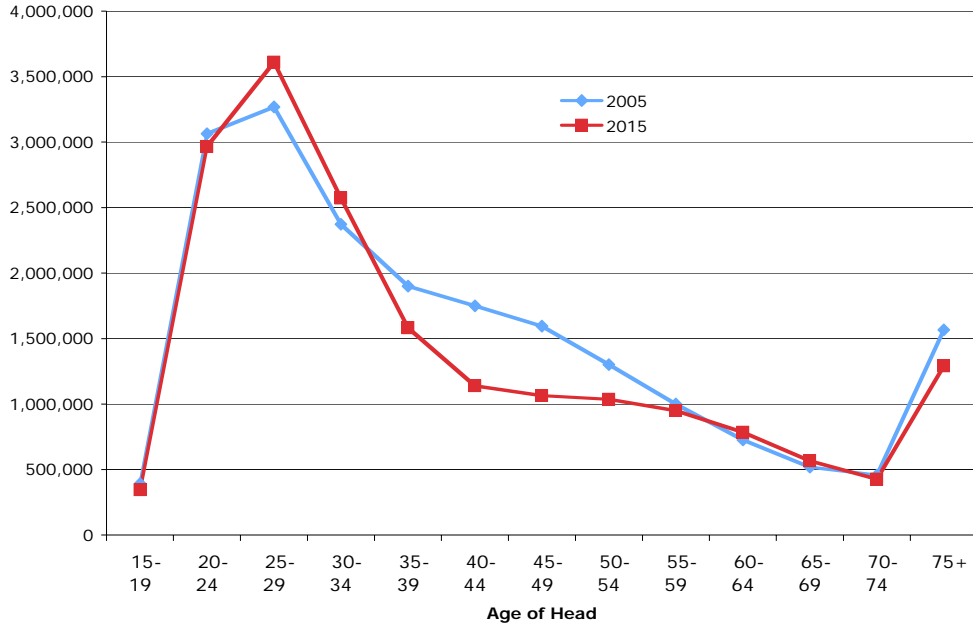
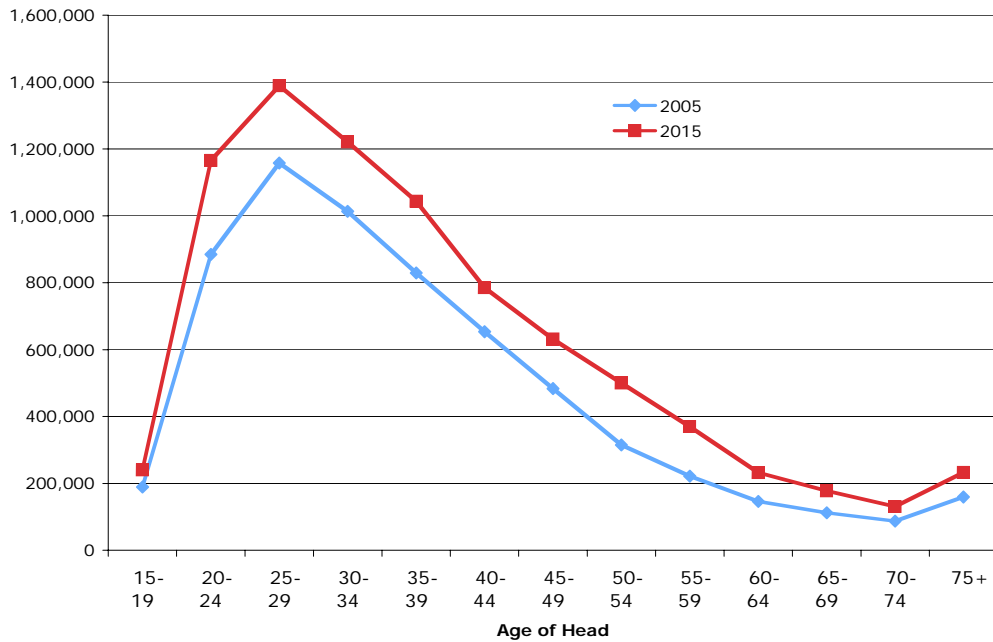


Figure 17

**Number of Renter Households
Hispanic**



Conclusions

Compared to our previous projections, the present series boosts the Hispanic share of total projected household growth over the next decade (2005-2015) from 31 percent to 35 percent. Hispanic share of total owner growth increases from 21 percent in the old projections to 26 percent in the new. A little more than a million additional Hispanic owners are added by the new projection assumptions and a little less than half a million renters are added. Total Hispanic household growth in the new projections is 1.5 million higher than in the old series.

Over the next decade Hispanics are projected to add about 1.4 million households headed by married couples with children under 18 living at home. In stark contrast, all non-Hispanic headed married couple households with children will decline by about 630,000 because of trends and differences in age structure and the delay in marriage and childbearing that characterizes non-Hispanics. A similar story will unfold for single parent households, with Hispanics projected to grow by almost 600,000 and all non-Hispanic headed single parent households projected to decline by about 280,000. Altogether, Hispanic households with minor children will increase by almost 2 million over the next decade while non-Hispanic headed households with minor children will decline by about 900,000.

The projected increase in Hispanic owners and renters will reinforce many of the housing market trends we have been observing over the past decade, while at the same time create new patterns. In largely Hispanic communities, growing pressure on housing will continue to drive costs upward, will create demand for reconfiguration of the housing stock to accommodate additional growth, and will reinforce patterns of overcrowding in many units. Places that are close to becoming majority Hispanic will become majority. Rental units will experience the most rapid turnover. At the same time, there will be continued movement of Hispanics into locations where they are in the minority, and even into places where they are not now present in significant numbers.⁸

⁸ William Frey reports that between 2000 and 2004 in 10 of the 15 fastest growing large metropolitan areas (500,000+ population in 2000), the majority of the growth was Hispanic driven. These include Las Vegas-Paradise (NV), Riverside-San Bernardino-Ontario (CA), McAllen-Edinburg-Pharr (TX), Stockton (CA), Phoenix-Mesa-Scottsdale (AZ), Orlando (FL), Austin-Round Rock (TX), Bakersfield (CA), Dallas-Fort Worth-Arlington (TX), and Houston-Baytown-Sugar Land (TX). The 10 metros with the fastest growing Hispanic populations, with rates of growth ranging between 35 and 55 percent during 2000-2004 also includes many smaller metros, with the list consisting of Cape-Coral-Fort Myers (FL), Charlotte-Gastonia-Concord (NC-SC), Raleigh-Cary (NC), Nashville-Davidson-Murfreesboro (TN), Indianapolis (IN), Atlanta-Sandy Springs-Marietta (GA), Naples-Marco Island (FL), Lakeland (FL), Sarasota-Brandenton-Venice (FL) and Las Vegas-Paradise (NV). In 12 of the 15 core counties of the nation's most populous metro areas there was a loss of non-Hispanic white population 2000-2004, and in six of

In presenting these projections we must remind the reader that there is much uncertainty built into them. Immigration levels might turn out to be lower, or higher, than the 1.2 million that we assume. Rates of household formation in the future will be tied to the performance of the economy – most importantly to trends in income and employment – always difficult to predict over the long term. Finally, our assumed “middle” series homeownership rates represent an average of a low and a high series that exhibits a large amount of variation. Again, homeownership rates will be tied to the future performance of the economy. In addition to uncertainty about income and employment trends, homeownership trends will reflect house prices, interest rates, and the continued impact of future immigration at the local level on the mix of households by race/Hispanic origin.

these also a loss of black population, but all 12 registered Hispanic gains. These core counties include Los Angeles (CA), Cook (IL), Harris (TX), Orange (CA), San Diego (CA), Kings (NY), Miami-Dade (FL), Dallas (TX), Queens (NY), Wayne (MI), King (WA), and Broward (FL). Perhaps more importantly, however, in 369 counties in the U.S., more than 10 percent of the total counties, Hispanic population passed the 5 percent share Hispanic threshold between 1990 and 2004. See William Frey, “Diversity Spreads Out: Metropolitan Shifts in Hispanic, Asian and Black Populations Since 2000,” The Brookings Institution, March 2006.

Appendix A

Revised 2006 Joint Center Interim Household Projections by Family Type and Age
(based on 1.2 million annual net immigrants, 2005 headship and family type held constant, and cohort trended ownership rates)

| Year | Age | Total Households | | Single Parent | Other Family | Single Person | Other Non-Family | Total |
|------|-------|------------------------|----------------------|------------------|------------------|-------------------|---------------------|--------------------|
| | | Married No Kids <18 | Married With Kids | | | | | |
| 2000 | 15-19 | 36,184 | 33,190 | 108,575 | 356,708 | 126,862 | 200,388 | 861,907 |
| 2000 | 20-24 | 735,716 | 900,214 | 963,323 | 428,872 | 1,140,498 | 1,347,150 | 5,515,773 |
| 2000 | 25-29 | 1,550,117 | 2,769,713 | 1,124,363 | 368,011 | 1,840,877 | 1,177,187 | 8,830,269 |
| 2000 | 30-34 | 1,331,907 | 4,938,642 | 1,342,693 | 208,770 | 2,045,034 | 779,656 | 10,646,702 |
| 2000 | 35-39 | 1,280,885 | 6,334,715 | 1,640,268 | 264,200 | 2,108,426 | 534,121 | 12,162,616 |
| 2000 | 40-44 | 1,748,141 | 5,948,801 | 1,509,315 | 426,546 | 2,026,774 | 576,393 | 12,235,970 |
| 2000 | 45-49 | 2,942,482 | 3,881,589 | 984,935 | 595,624 | 2,207,452 | 465,287 | 11,077,368 |
| 2000 | 50-54 | 4,378,477 | 1,700,982 | 384,579 | 709,293 | 2,349,535 | 379,440 | 9,902,306 |
| 2000 | 55-59 | 4,085,620 | 478,996 | 108,326 | 601,298 | 2,057,517 | 282,388 | 7,614,145 |
| 2000 | 60-64 | 3,703,611 | 161,657 | 25,148 | 427,436 | 1,931,165 | 197,919 | 6,446,936 |
| 2000 | 65-69 | 3,297,938 | 59,621 | 30,738 | 397,416 | 1,941,499 | 132,795 | 5,860,007 |
| 2000 | 70-74 | 2,783,422 | 47,777 | 2,212 | 385,780 | 2,251,483 | 66,840 | 5,537,514 |
| 2000 | 75+ | 3,706,074 | 23,036 | 10,699 | 907,106 | 5,909,183 | 189,995 | 10,746,093 |
| 2000 | Total | 31,580,575 | 27,278,935 | 8,235,174 | 6,077,058 | 27,936,304 | 6,329,560 | 107,437,606 |

| Year | Age | Total Households | | Single Parent | Other Family | Single Person | Other Non-Family | Total |
|------|-------|------------------------|----------------------|------------------|------------------|-------------------|---------------------|--------------------|
| | | Married No Kids <18 | Married With Kids | | | | | |
| 2005 | 15-19 | 38,580 | 35,388 | 115,763 | 380,324 | 133,055 | 210,170 | 913,279 |
| 2005 | 20-24 | 806,598 | 986,944 | 1,056,133 | 470,191 | 1,247,831 | 1,473,931 | 6,041,628 |
| 2005 | 25-29 | 1,597,869 | 2,855,034 | 1,159,000 | 379,348 | 1,882,361 | 1,203,714 | 9,077,326 |
| 2005 | 30-34 | 1,290,585 | 4,785,424 | 1,301,037 | 202,293 | 1,957,638 | 746,337 | 10,283,314 |
| 2005 | 35-39 | 1,185,303 | 5,862,004 | 1,517,868 | 244,485 | 1,934,839 | 490,147 | 11,234,645 |
| 2005 | 40-44 | 1,767,489 | 6,014,640 | 1,526,019 | 431,266 | 2,046,517 | 582,007 | 12,367,938 |
| 2005 | 45-49 | 3,270,718 | 4,314,582 | 1,094,805 | 662,066 | 2,452,980 | 517,039 | 12,312,189 |
| 2005 | 50-54 | 4,920,686 | 1,911,623 | 432,203 | 797,129 | 2,642,039 | 426,678 | 11,130,359 |
| 2005 | 55-59 | 5,235,247 | 613,778 | 138,808 | 770,493 | 2,638,503 | 362,127 | 9,758,956 |
| 2005 | 60-64 | 4,442,310 | 193,900 | 30,164 | 512,690 | 2,318,563 | 237,622 | 7,735,249 |
| 2005 | 65-69 | 3,502,861 | 63,326 | 32,648 | 422,110 | 2,069,571 | 141,555 | 6,232,071 |
| 2005 | 70-74 | 2,669,356 | 45,819 | 2,121 | 369,970 | 2,167,216 | 64,339 | 5,318,822 |
| 2005 | 75+ | 4,013,965 | 24,950 | 11,588 | 982,466 | 6,393,919 | 205,580 | 11,632,468 |
| 2005 | Total | 34,741,567 | 27,707,412 | 8,418,156 | 6,624,830 | 29,885,030 | 6,661,248 | 114,038,244 |

Appendix A (continued)

Revised 2006 Joint Center Interim Household Projections by Family Type and Age
(based on 1.2 million annual net immigrants, 2005 headship and family type held constant, and cohort trended ownership rates)

| Year | Age | Total Households | | Single Parent | Other Family | Single Person | Other Non-Family | Total |
|------|-------|---------------------|-------------------|------------------|------------------|-------------------|------------------|--------------------|
| | | Married No Kids <18 | Married With Kids | | | | | |
| 2010 | 15-19 | 40,023 | 36,712 | 120,095 | 394,555 | 134,507 | 212,465 | 938,357 |
| 2010 | 20-24 | 851,005 | 1,041,280 | 1,114,279 | 496,077 | 1,298,948 | 1,534,311 | 6,335,900 |
| 2010 | 25-29 | 1,745,612 | 3,119,018 | 1,266,164 | 414,423 | 2,055,005 | 1,314,116 | 9,914,338 |
| 2010 | 30-34 | 1,329,184 | 4,928,545 | 1,339,948 | 208,343 | 2,005,624 | 764,631 | 10,576,275 |
| 2010 | 35-39 | 1,151,682 | 5,695,730 | 1,474,814 | 237,550 | 1,863,747 | 472,137 | 10,895,660 |
| 2010 | 40-44 | 1,638,536 | 5,575,823 | 1,414,684 | 399,802 | 1,893,937 | 538,615 | 11,461,397 |
| 2010 | 45-49 | 3,311,031 | 4,367,761 | 1,108,299 | 670,226 | 2,482,273 | 523,213 | 12,462,803 |
| 2010 | 50-54 | 5,471,183 | 2,125,484 | 480,555 | 886,307 | 2,939,281 | 474,682 | 12,377,492 |
| 2010 | 55-59 | 5,894,366 | 691,052 | 156,284 | 867,499 | 2,973,850 | 408,153 | 10,991,203 |
| 2010 | 60-64 | 5,700,974 | 248,839 | 38,711 | 657,953 | 2,982,537 | 305,671 | 9,934,685 |
| 2010 | 65-69 | 4,222,128 | 76,329 | 39,352 | 508,785 | 2,497,417 | 170,819 | 7,514,830 |
| 2010 | 70-74 | 2,861,118 | 49,111 | 2,274 | 396,548 | 2,329,385 | 69,153 | 5,707,589 |
| 2010 | 75+ | 4,215,919 | 26,205 | 12,171 | 1,031,896 | 6,707,576 | 215,665 | 12,209,433 |
| 2010 | Total | 38,432,761 | 27,981,891 | 8,567,627 | 7,169,965 | 32,164,087 | 7,003,631 | 121,319,962 |

| Year | Age | Total Households | | Single Parent | Other Family | Single Person | Other Non-Family | Total |
|------|-------|---------------------|-------------------|------------------|------------------|-------------------|------------------|--------------------|
| | | Married No Kids <18 | Married With Kids | | | | | |
| 2015 | 15-19 | 38,741 | 35,535 | 116,245 | 381,909 | 128,259 | 202,595 | 903,284 |
| 2015 | 20-24 | 869,005 | 1,063,304 | 1,137,847 | 506,570 | 1,297,499 | 1,532,599 | 6,406,823 |
| 2015 | 25-29 | 1,828,603 | 3,267,305 | 1,326,361 | 434,126 | 2,137,333 | 1,366,762 | 10,360,491 |
| 2015 | 30-34 | 1,446,920 | 5,365,106 | 1,458,638 | 226,798 | 2,182,942 | 832,233 | 11,512,637 |
| 2015 | 35-39 | 1,185,842 | 5,864,672 | 1,518,559 | 244,596 | 1,912,043 | 484,372 | 11,210,084 |
| 2015 | 40-44 | 1,592,340 | 5,418,622 | 1,374,799 | 388,530 | 1,837,308 | 522,510 | 11,134,109 |
| 2015 | 45-49 | 3,074,429 | 4,055,647 | 1,029,101 | 622,332 | 2,303,740 | 485,582 | 11,570,831 |
| 2015 | 50-54 | 5,539,551 | 2,152,044 | 486,561 | 897,382 | 2,978,238 | 480,973 | 12,534,749 |
| 2015 | 55-59 | 6,560,368 | 769,134 | 173,942 | 965,517 | 3,313,279 | 454,738 | 12,236,978 |
| 2015 | 60-64 | 6,422,272 | 280,322 | 43,609 | 741,198 | 3,371,348 | 345,519 | 11,204,268 |
| 2015 | 65-69 | 5,429,072 | 98,148 | 50,601 | 654,227 | 3,220,759 | 220,294 | 9,673,101 |
| 2015 | 70-74 | 3,465,538 | 59,486 | 2,754 | 480,320 | 2,823,873 | 83,833 | 6,915,804 |
| 2015 | 75+ | 4,494,631 | 27,938 | 12,975 | 1,100,114 | 7,142,042 | 229,634 | 13,007,334 |
| 2015 | Total | 41,947,311 | 28,457,264 | 8,731,990 | 7,643,620 | 34,648,662 | 7,241,645 | 128,670,493 |

Appendix A (continued)

**Revised 2006 Joint Center Interim Household Projections by Family Type and Age
(based on 1.2 million annual net immigrants, 2005 headship and family type held constant, and cohort trended ownership rates)**

| Year | Age | Total Households | | | | Single Person | Other Non-Family | Total |
|------|-------|------------------------|----------------------|------------------|------------------|-------------------|---------------------|--------------------|
| | | Married No Kids <18 | Married With Kids | Single Parent | Other Family | | | |
| 2020 | 15-19 | 41,741 | 38,287 | 125,247 | 411,483 | 136,034 | 214,875 | 967,667 |
| 2020 | 20-24 | 835,817 | 1,022,696 | 1,094,391 | 487,223 | 1,230,828 | 1,453,849 | 6,124,804 |
| 2020 | 25-29 | 1,851,855 | 3,308,852 | 1,343,226 | 439,647 | 2,138,080 | 1,367,240 | 10,448,900 |
| 2020 | 30-34 | 1,513,102 | 5,610,505 | 1,525,356 | 237,171 | 2,272,287 | 866,295 | 12,024,716 |
| 2020 | 35-39 | 1,288,741 | 6,373,568 | 1,650,329 | 265,820 | 2,077,950 | 526,401 | 12,182,809 |
| 2020 | 40-44 | 1,639,279 | 5,578,350 | 1,415,325 | 399,983 | 1,890,086 | 537,520 | 11,460,542 |
| 2020 | 45-49 | 2,991,306 | 3,945,995 | 1,001,277 | 605,507 | 2,240,319 | 472,215 | 11,256,619 |
| 2020 | 50-54 | 5,148,064 | 1,999,957 | 452,175 | 833,963 | 2,770,514 | 447,426 | 11,652,098 |
| 2020 | 55-59 | 6,654,055 | 780,118 | 176,426 | 979,305 | 3,365,237 | 461,869 | 12,417,010 |
| 2020 | 60-64 | 7,154,155 | 312,268 | 48,578 | 825,665 | 3,768,078 | 386,179 | 12,494,923 |
| 2020 | 65-69 | 6,131,628 | 110,849 | 57,149 | 738,889 | 3,653,636 | 249,903 | 10,942,054 |
| 2020 | 70-74 | 4,474,537 | 76,805 | 3,556 | 620,166 | 3,654,047 | 108,479 | 8,937,591 |
| 2020 | 75+ | 5,109,834 | 31,762 | 14,751 | 1,250,693 | 8,111,794 | 260,814 | 14,779,648 |
| 2020 | Total | 44,834,113 | 29,190,011 | 8,907,786 | 8,095,516 | 37,308,892 | 7,353,063 | 135,689,381 |

Appendix A (continued)

**Revised 2006 Joint Center Interim Household Projections by Family Type and Age
(based on 1.2 million annual net immigrants and 2005 headship and family type held constant)**

| | | Non-Hispanic White Alone Households | | | | | | | |
|------|-------|-------------------------------------|----------------------|------------------|------------------|-------------------|---------------------|-------------------|--|
| Year | Age | Married No Kids <18 | Married With Kids | Single Parent | Other Family | Single Person | Other Non-Family | Total | |
| 2000 | 15-19 | 17,559 | 16,106 | 52,688 | 173,100 | 83,152 | 131,346 | 473,951 | |
| 2000 | 20-24 | 413,900 | 506,444 | 541,948 | 241,275 | 813,432 | 960,823 | 3,477,822 | |
| 2000 | 25-29 | 964,125 | 1,722,675 | 699,319 | 228,892 | 1,303,013 | 833,238 | 5,751,261 | |
| 2000 | 30-34 | 879,964 | 3,262,862 | 887,090 | 137,930 | 1,464,847 | 558,464 | 7,191,157 | |
| 2000 | 35-39 | 886,828 | 4,385,877 | 1,135,649 | 182,920 | 1,539,287 | 389,943 | 8,520,505 | |
| 2000 | 40-44 | 1,266,417 | 4,309,528 | 1,093,403 | 309,005 | 1,483,163 | 421,796 | 8,883,312 | |
| 2000 | 45-49 | 2,197,768 | 2,899,196 | 735,657 | 444,877 | 1,653,228 | 348,467 | 8,279,193 | |
| 2000 | 50-54 | 3,390,754 | 1,317,265 | 297,823 | 549,287 | 1,810,734 | 292,426 | 7,658,289 | |
| 2000 | 55-59 | 3,224,791 | 378,073 | 85,502 | 474,606 | 1,610,500 | 221,037 | 5,994,509 | |
| 2000 | 60-64 | 2,953,945 | 128,935 | 20,058 | 340,916 | 1,499,042 | 153,632 | 5,096,529 | |
| 2000 | 65-69 | 2,687,917 | 48,593 | 25,052 | 323,906 | 1,530,722 | 104,699 | 4,720,889 | |
| 2000 | 70-74 | 2,345,605 | 40,262 | 1,864 | 325,099 | 1,855,624 | 55,088 | 4,623,542 | |
| 2000 | 75+ | 3,216,484 | 19,993 | 9,286 | 787,273 | 5,164,894 | 166,064 | 9,363,993 | |
| 2000 | Total | 24,446,058 | 19,035,808 | 5,585,339 | 4,519,086 | 21,811,639 | 4,637,022 | 80,034,952 | |

| | | Non-Hispanic White Alone Households | | | | | | | |
|------|-------|-------------------------------------|----------------------|------------------|------------------|-------------------|---------------------|-------------------|--|
| Year | Age | Married No Kids <18 | Married With Kids | Single Parent | Other Family | Single Person | Other Non-Family | Total | |
| 2005 | 15-19 | 17,798 | 16,326 | 53,405 | 175,456 | 84,284 | 133,134 | 480,403 | |
| 2005 | 20-24 | 451,093 | 551,953 | 590,647 | 262,956 | 886,527 | 1,047,161 | 3,790,337 | |
| 2005 | 25-29 | 958,714 | 1,713,008 | 695,394 | 227,607 | 1,295,701 | 828,562 | 5,718,986 | |
| 2005 | 30-34 | 789,787 | 2,928,490 | 796,183 | 123,795 | 1,314,733 | 501,234 | 6,454,223 | |
| 2005 | 35-39 | 764,887 | 3,782,806 | 979,494 | 157,768 | 1,327,630 | 336,325 | 7,348,911 | |
| 2005 | 40-44 | 1,217,440 | 4,142,861 | 1,051,116 | 297,055 | 1,425,803 | 405,483 | 8,539,758 | |
| 2005 | 45-49 | 2,353,689 | 3,104,880 | 787,849 | 476,439 | 1,770,517 | 373,190 | 8,866,564 | |
| 2005 | 50-54 | 3,675,643 | 1,427,940 | 322,846 | 595,437 | 1,962,870 | 316,995 | 8,301,731 | |
| 2005 | 55-59 | 4,029,873 | 472,460 | 106,848 | 593,093 | 2,012,569 | 276,220 | 7,491,064 | |
| 2005 | 60-64 | 3,510,928 | 153,247 | 23,840 | 405,198 | 1,781,695 | 182,600 | 6,057,508 | |
| 2005 | 65-69 | 2,783,382 | 50,319 | 25,942 | 335,410 | 1,585,088 | 108,417 | 4,888,558 | |
| 2005 | 70-74 | 2,178,721 | 37,398 | 1,731 | 301,969 | 1,723,601 | 51,169 | 4,294,589 | |
| 2005 | 75+ | 3,411,407 | 21,205 | 9,848 | 834,983 | 5,477,893 | 176,128 | 9,931,464 | |
| 2005 | Total | 26,143,363 | 18,402,892 | 5,445,145 | 4,787,167 | 22,648,912 | 4,736,617 | 82,164,096 | |

Appendix A (continued)

**Revised 2006 Joint Center Interim Household Projections by Family Type and Age
(based on 1.2 million annual net immigrants and 2005 headship and family type held constant)**

| | | Non-Hispanic White Alone Households | | | | | | Total |
|------|-------|-------------------------------------|----------------------|------------------|------------------|-------------------|---------------------|-------------------|
| Year | Age | Married No Kids <18 | Married With Kids | Single Parent | Other Family | Single Person | Other Non-Family | |
| 2010 | 15-19 | 16,988 | 15,582 | 50,974 | 167,467 | 80,447 | 127,072 | 458,530 |
| 2010 | 20-24 | 457,400 | 559,670 | 598,905 | 266,633 | 898,923 | 1,061,803 | 3,843,335 |
| 2010 | 25-29 | 1,044,125 | 1,865,618 | 757,347 | 247,884 | 1,411,133 | 902,378 | 6,228,485 |
| 2010 | 30-34 | 785,678 | 2,913,253 | 792,040 | 123,151 | 1,307,893 | 498,625 | 6,420,640 |
| 2010 | 35-39 | 687,562 | 3,400,389 | 880,474 | 141,819 | 1,193,416 | 302,324 | 6,605,983 |
| 2010 | 40-44 | 1,051,980 | 3,579,815 | 908,262 | 256,683 | 1,232,026 | 350,375 | 7,379,141 |
| 2010 | 45-49 | 2,265,331 | 2,988,322 | 758,273 | 458,553 | 1,704,051 | 359,180 | 8,533,710 |
| 2010 | 50-54 | 3,941,565 | 1,531,247 | 346,203 | 638,516 | 2,104,878 | 339,929 | 8,902,338 |
| 2010 | 55-59 | 4,378,237 | 513,302 | 116,085 | 644,364 | 2,186,547 | 300,097 | 8,138,632 |
| 2010 | 60-64 | 4,403,550 | 192,208 | 29,901 | 508,216 | 2,234,675 | 229,025 | 7,597,576 |
| 2010 | 65-69 | 3,327,123 | 60,149 | 31,010 | 400,933 | 1,894,738 | 129,597 | 5,843,550 |
| 2010 | 70-74 | 2,277,910 | 39,100 | 1,810 | 315,716 | 1,802,069 | 53,499 | 4,490,105 |
| 2010 | 75+ | 3,489,060 | 21,687 | 10,072 | 853,989 | 5,602,584 | 180,137 | 10,157,530 |
| 2010 | Total | 28,126,511 | 17,680,343 | 5,281,356 | 5,023,924 | 23,653,379 | 4,834,042 | 84,599,555 |

| | | Non-Hispanic White Alone Households | | | | | | Total |
|------|-------|-------------------------------------|----------------------|------------------|------------------|-------------------|---------------------|-------------------|
| Year | Age | Married No Kids <18 | Married With Kids | Single Parent | Other Family | Single Person | Other Non-Family | |
| 2015 | 15-19 | 15,632 | 14,339 | 46,907 | 154,106 | 74,028 | 116,934 | 421,946 |
| 2015 | 20-24 | 436,597 | 534,215 | 571,666 | 254,506 | 858,038 | 1,013,510 | 3,668,532 |
| 2015 | 25-29 | 1,058,312 | 1,890,967 | 767,637 | 251,253 | 1,430,307 | 914,640 | 6,313,116 |
| 2015 | 30-34 | 854,390 | 3,168,033 | 861,309 | 133,921 | 1,422,275 | 542,233 | 6,982,160 |
| 2015 | 35-39 | 683,987 | 3,382,711 | 875,896 | 141,082 | 1,187,211 | 300,753 | 6,571,640 |
| 2015 | 40-44 | 946,576 | 3,221,132 | 817,257 | 230,964 | 1,108,582 | 315,269 | 6,639,781 |
| 2015 | 45-49 | 1,959,680 | 2,585,121 | 655,962 | 396,683 | 1,474,132 | 310,717 | 7,382,295 |
| 2015 | 50-54 | 3,796,788 | 1,475,003 | 333,487 | 615,062 | 2,027,564 | 327,443 | 8,575,348 |
| 2015 | 55-59 | 4,701,113 | 551,156 | 124,646 | 691,883 | 2,347,794 | 322,228 | 8,738,819 |
| 2015 | 60-64 | 4,794,548 | 209,275 | 32,556 | 553,341 | 2,433,095 | 249,360 | 8,272,175 |
| 2015 | 65-69 | 4,187,498 | 75,703 | 39,029 | 504,612 | 2,384,707 | 163,110 | 7,354,659 |
| 2015 | 70-74 | 2,737,918 | 46,996 | 2,176 | 379,473 | 2,165,985 | 64,302 | 5,396,850 |
| 2015 | 75+ | 3,614,863 | 22,469 | 10,436 | 884,781 | 5,804,594 | 186,632 | 10,523,775 |
| 2015 | Total | 29,787,903 | 17,177,120 | 5,138,963 | 5,191,666 | 24,718,312 | 4,827,131 | 86,841,096 |

Appendix A (continued)

**Revised 2006 Joint Center Interim Household Projections by Family Type and Age
(based on 1.2 million annual net immigrants and 2005 headship and family type held constant)**

| Year | Age | Non-Hispanic White Alone Households | | | | Single Person | Other Non-Family | Total |
|------|-------|-------------------------------------|----------------------|------------------|------------------|-------------------|---------------------|-------------------|
| | | Married No Kids <18 | Married With Kids | Single Parent | Other Family | | | |
| 2020 | 15-19 | 15,940 | 14,621 | 47,829 | 157,134 | 75,483 | 119,232 | 430,238 |
| 2020 | 20-24 | 401,884 | 491,741 | 526,214 | 234,271 | 789,818 | 932,929 | 3,376,858 |
| 2020 | 25-29 | 1,010,819 | 1,806,107 | 733,188 | 239,977 | 1,366,120 | 873,593 | 6,029,804 |
| 2020 | 30-34 | 865,897 | 3,210,702 | 872,909 | 135,725 | 1,441,431 | 549,536 | 7,076,200 |
| 2020 | 35-39 | 743,316 | 3,676,125 | 951,871 | 153,319 | 1,290,189 | 326,840 | 7,141,660 |
| 2020 | 40-44 | 942,131 | 3,206,005 | 813,419 | 229,879 | 1,103,376 | 313,788 | 6,608,598 |
| 2020 | 45-49 | 1,765,276 | 2,328,672 | 590,890 | 357,331 | 1,327,894 | 279,894 | 6,649,957 |
| 2020 | 50-54 | 3,288,709 | 1,277,621 | 288,860 | 532,756 | 1,756,239 | 283,625 | 7,427,810 |
| 2020 | 55-59 | 4,534,677 | 531,643 | 120,233 | 667,388 | 2,264,674 | 310,820 | 8,429,434 |
| 2020 | 60-64 | 5,159,193 | 225,191 | 35,032 | 595,425 | 2,618,142 | 268,325 | 8,901,309 |
| 2020 | 65-69 | 4,574,518 | 82,699 | 42,636 | 551,250 | 2,605,108 | 178,185 | 8,034,396 |
| 2020 | 70-74 | 3,464,345 | 59,465 | 2,753 | 480,155 | 2,740,666 | 81,363 | 6,828,747 |
| 2020 | 75+ | 4,018,266 | 24,977 | 11,600 | 983,518 | 6,452,360 | 207,459 | 11,698,180 |
| 2020 | Total | 30,784,970 | 16,935,569 | 5,037,434 | 5,318,128 | 25,831,500 | 4,725,589 | 88,633,191 |

Appendix A (continued)

**Revised 2006 Joint Center Interim Household Projections by Family Type and Age
(based on 1.2 million annual net immigrants and 2005 headship and family type held constant)**

| Year | Age | Total Minority Households | | Single Parent | Other Family | Single Person | Other Non-Family | Total |
|------|-------|---------------------------|-------------------|------------------|------------------|------------------|------------------|-------------------|
| | | Married No Kids <18 | Married With Kids | | | | | |
| 2000 | 15-19 | 18,625 | 17,084 | 55,887 | 183,608 | 43,710 | 69,042 | 387,956 |
| 2000 | 20-24 | 321,816 | 393,770 | 421,375 | 187,596 | 327,065 | 386,328 | 2,037,951 |
| 2000 | 25-29 | 585,993 | 1,047,038 | 425,044 | 139,120 | 537,864 | 343,949 | 3,079,008 |
| 2000 | 30-34 | 451,943 | 1,675,781 | 455,603 | 70,840 | 580,187 | 221,192 | 3,455,545 |
| 2000 | 35-39 | 394,057 | 1,948,838 | 504,619 | 81,280 | 569,139 | 144,178 | 3,642,111 |
| 2000 | 40-44 | 481,724 | 1,639,273 | 415,912 | 117,540 | 543,611 | 154,597 | 3,352,658 |
| 2000 | 45-49 | 744,714 | 982,393 | 249,278 | 150,747 | 554,225 | 116,819 | 2,798,175 |
| 2000 | 50-54 | 987,722 | 383,717 | 86,756 | 160,007 | 538,801 | 87,014 | 2,244,017 |
| 2000 | 55-59 | 860,829 | 100,923 | 22,824 | 126,692 | 447,016 | 61,352 | 1,619,636 |
| 2000 | 60-64 | 749,666 | 32,722 | 5,090 | 86,519 | 432,123 | 44,287 | 1,350,407 |
| 2000 | 65-69 | 610,021 | 11,028 | 5,686 | 73,510 | 410,777 | 28,096 | 1,139,118 |
| 2000 | 70-74 | 437,817 | 7,515 | 348 | 60,681 | 395,859 | 11,752 | 913,972 |
| 2000 | 75+ | 489,590 | 3,043 | 1,413 | 119,833 | 744,289 | 23,931 | 1,382,100 |
| 2000 | Total | 7,134,517 | 8,243,126 | 2,649,835 | 1,557,973 | 6,124,665 | 1,692,538 | 27,402,654 |

| Year | Age | Total Minority Households | | Single Parent | Other Family | Single Person | Other Non-Family | Total |
|------|-------|---------------------------|-------------------|------------------|------------------|------------------|------------------|-------------------|
| | | Married No Kids <18 | Married With Kids | | | | | |
| 2005 | 15-19 | 20,782 | 19,062 | 62,358 | 204,868 | 48,770 | 77,037 | 432,876 |
| 2005 | 20-24 | 355,505 | 434,991 | 465,486 | 207,235 | 361,304 | 426,770 | 2,251,291 |
| 2005 | 25-29 | 639,155 | 1,142,027 | 463,605 | 151,741 | 586,660 | 375,152 | 3,358,340 |
| 2005 | 30-34 | 500,798 | 1,856,934 | 504,854 | 78,498 | 642,905 | 245,103 | 3,829,091 |
| 2005 | 35-39 | 420,416 | 2,079,198 | 538,373 | 86,716 | 607,209 | 153,822 | 3,885,734 |
| 2005 | 40-44 | 550,049 | 1,871,778 | 474,903 | 134,212 | 620,714 | 176,524 | 3,828,180 |
| 2005 | 45-49 | 917,028 | 1,209,702 | 306,956 | 185,627 | 682,463 | 143,849 | 3,445,625 |
| 2005 | 50-54 | 1,245,044 | 483,684 | 109,357 | 201,691 | 679,169 | 109,683 | 2,828,628 |
| 2005 | 55-59 | 1,205,374 | 141,317 | 31,959 | 177,400 | 625,933 | 85,908 | 2,267,892 |
| 2005 | 60-64 | 931,382 | 40,653 | 6,324 | 107,491 | 536,868 | 55,022 | 1,677,741 |
| 2005 | 65-69 | 719,479 | 13,007 | 6,706 | 86,700 | 484,483 | 33,138 | 1,343,513 |
| 2005 | 70-74 | 490,635 | 8,422 | 390 | 68,002 | 443,615 | 13,170 | 1,024,233 |
| 2005 | 75+ | 602,558 | 3,745 | 1,740 | 147,483 | 916,026 | 29,452 | 1,701,004 |
| 2005 | Total | 8,598,204 | 9,304,520 | 2,973,011 | 1,837,664 | 7,236,118 | 1,924,631 | 31,874,148 |

Appendix A (continued)

Revised 2006 Joint Center Interim Household Projections by Family Type and Age
(based on 1.2 million annual net immigrants and 2005 headship and family type held constant)

| Year | Age | Total Minority Households | | | | Single Person | Other Non-Family | Total |
|------|-------|---------------------------|-------------------|------------------|------------------|------------------|------------------|-------------------|
| | | Married No Kids <18 | Married With Kids | Single Parent | Other Family | | | |
| 2010 | 15-19 | 23,036 | 21,130 | 69,121 | 227,088 | 54,060 | 85,393 | 479,827 |
| 2010 | 20-24 | 393,605 | 481,610 | 515,373 | 229,444 | 400,025 | 472,508 | 2,492,565 |
| 2010 | 25-29 | 701,487 | 1,253,400 | 508,817 | 166,539 | 643,872 | 411,738 | 3,685,853 |
| 2010 | 30-34 | 543,506 | 2,015,293 | 547,908 | 85,192 | 697,731 | 266,006 | 4,155,635 |
| 2010 | 35-39 | 464,120 | 2,295,342 | 594,340 | 95,731 | 670,331 | 169,813 | 4,289,677 |
| 2010 | 40-44 | 586,556 | 1,996,008 | 506,422 | 143,119 | 661,911 | 188,240 | 4,082,256 |
| 2010 | 45-49 | 1,045,700 | 1,379,439 | 350,026 | 211,673 | 778,221 | 164,034 | 3,929,093 |
| 2010 | 50-54 | 1,529,618 | 594,237 | 134,352 | 247,791 | 834,403 | 134,753 | 3,475,154 |
| 2010 | 55-59 | 1,516,128 | 177,750 | 40,199 | 223,135 | 787,304 | 108,055 | 2,852,571 |
| 2010 | 60-64 | 1,297,424 | 56,631 | 8,810 | 149,736 | 747,862 | 76,646 | 2,337,109 |
| 2010 | 65-69 | 895,005 | 16,180 | 8,342 | 107,852 | 602,679 | 41,222 | 1,671,280 |
| 2010 | 70-74 | 583,208 | 10,011 | 463 | 80,832 | 527,315 | 15,655 | 1,217,484 |
| 2010 | 75+ | 726,859 | 4,518 | 2,098 | 177,907 | 1,104,992 | 35,528 | 2,051,903 |
| 2010 | Total | 10,306,251 | 10,301,548 | 3,286,271 | 2,146,040 | 8,510,708 | 2,169,589 | 36,720,407 |

| Year | Age | Total Minority Households | | | | Single Person | Other Non-Family | Total |
|------|-------|---------------------------|-------------------|------------------|------------------|------------------|------------------|-------------------|
| | | Married No Kids <18 | Married With Kids | Single Parent | Other Family | | | |
| 2015 | 15-19 | 23,108 | 21,196 | 69,339 | 227,803 | 54,231 | 85,661 | 481,338 |
| 2015 | 20-24 | 432,408 | 529,089 | 566,181 | 252,064 | 439,461 | 519,089 | 2,738,291 |
| 2015 | 25-29 | 770,291 | 1,376,338 | 558,724 | 182,874 | 707,026 | 452,122 | 4,047,375 |
| 2015 | 30-34 | 592,531 | 2,197,074 | 597,329 | 92,876 | 760,667 | 290,000 | 4,530,477 |
| 2015 | 35-39 | 501,855 | 2,481,961 | 642,662 | 103,514 | 724,832 | 183,619 | 4,638,444 |
| 2015 | 40-44 | 645,764 | 2,197,489 | 557,541 | 157,566 | 728,725 | 207,242 | 4,494,328 |
| 2015 | 45-49 | 1,114,749 | 1,470,526 | 373,139 | 225,650 | 829,608 | 174,865 | 4,188,536 |
| 2015 | 50-54 | 1,742,763 | 677,041 | 153,074 | 282,320 | 950,674 | 153,530 | 3,959,401 |
| 2015 | 55-59 | 1,859,255 | 217,978 | 49,296 | 273,634 | 965,485 | 132,510 | 3,498,159 |
| 2015 | 60-64 | 1,627,724 | 71,048 | 11,053 | 187,857 | 938,253 | 96,159 | 2,932,093 |
| 2015 | 65-69 | 1,241,573 | 22,445 | 11,572 | 149,615 | 836,052 | 57,184 | 2,318,442 |
| 2015 | 70-74 | 727,620 | 12,490 | 578 | 100,847 | 657,888 | 19,531 | 1,518,954 |
| 2015 | 75+ | 879,767 | 5,468 | 2,540 | 215,334 | 1,337,448 | 43,002 | 2,483,559 |
| 2015 | Total | 12,159,408 | 11,280,144 | 3,593,027 | 2,451,954 | 9,930,350 | 2,414,514 | 41,829,397 |

Appendix A (continued)

**Revised 2006 Joint Center Interim Household Projections by Family Type and Age
(based on 1.2 million annual net immigrants and 2005 headship and family type held constant)**

| Year | Age | Total Minority Households | | | | Single Person | Other Non-Family | Total |
|------|-------|---------------------------|----------------------|------------------|------------------|-------------------|---------------------|-------------------|
| | | Married No Kids <18 | Married With Kids | Single Parent | Other Family | | | |
| 2020 | 15-19 | 25,801 | 23,666 | 77,419 | 254,349 | 60,550 | 95,644 | 537,429 |
| 2020 | 20-24 | 433,932 | 530,955 | 568,177 | 252,953 | 441,010 | 520,920 | 2,747,946 |
| 2020 | 25-29 | 841,037 | 1,502,745 | 610,038 | 199,669 | 771,961 | 493,646 | 4,419,096 |
| 2020 | 30-34 | 647,205 | 2,399,803 | 652,446 | 101,446 | 830,856 | 316,759 | 4,948,516 |
| 2020 | 35-39 | 545,425 | 2,697,443 | 698,458 | 112,501 | 787,761 | 199,561 | 5,041,149 |
| 2020 | 40-44 | 697,148 | 2,372,345 | 601,905 | 170,104 | 786,710 | 223,732 | 4,851,944 |
| 2020 | 45-49 | 1,226,030 | 1,617,323 | 410,388 | 248,176 | 912,425 | 192,321 | 4,606,662 |
| 2020 | 50-54 | 1,859,355 | 722,336 | 163,314 | 301,207 | 1,014,275 | 163,801 | 4,224,288 |
| 2020 | 55-59 | 2,119,378 | 248,475 | 56,193 | 311,918 | 1,100,563 | 151,049 | 3,987,576 |
| 2020 | 60-64 | 1,994,961 | 87,077 | 13,546 | 230,240 | 1,149,937 | 117,853 | 3,593,614 |
| 2020 | 65-69 | 1,557,111 | 28,150 | 14,513 | 187,639 | 1,048,528 | 71,718 | 2,907,658 |
| 2020 | 70-74 | 1,010,193 | 17,340 | 803 | 140,012 | 913,381 | 27,116 | 2,108,844 |
| 2020 | 75+ | 1,091,568 | 6,785 | 3,151 | 267,174 | 1,659,434 | 53,355 | 3,081,468 |
| 2020 | Total | 14,049,144 | 12,254,441 | 3,870,352 | 2,777,387 | 11,477,392 | 2,627,474 | 47,056,190 |

Appendix A (continued)

**Revised 2006 Joint Center Interim Household Projections by Family Type and Age
(based on 1.2 million annual net immigrants and 2005 headship and family type held constant)**

| | | Hispanic Households | | | | | | | |
|------|-------|------------------------|----------------------|------------------|------------------|------------------|---------------------|------------------|--|
| Year | Age | Married No Kids <18 | Married With Kids | Single Parent | Other Family | Single Person | Other Non-Family | Total | |
| 2000 | 15-19 | 6,736 | 20,037 | 19,991 | 92,994 | 11,845 | 35,449 | 187,053 | |
| 2000 | 20-24 | 74,231 | 220,871 | 198,146 | 172,134 | 124,043 | 124,852 | 914,278 | |
| 2000 | 25-29 | 108,649 | 564,484 | 271,088 | 113,799 | 168,390 | 138,294 | 1,364,704 | |
| 2000 | 30-34 | 123,389 | 767,236 | 301,648 | 63,995 | 145,947 | 70,550 | 1,472,765 | |
| 2000 | 35-39 | 74,124 | 724,594 | 301,272 | 75,182 | 142,017 | 85,939 | 1,403,129 | |
| 2000 | 40-44 | 134,291 | 578,387 | 220,305 | 68,094 | 110,624 | 49,809 | 1,161,510 | |
| 2000 | 45-49 | 155,629 | 350,741 | 122,382 | 109,588 | 126,979 | 32,475 | 897,793 | |
| 2000 | 50-54 | 218,948 | 169,932 | 70,982 | 91,568 | 119,550 | 27,502 | 698,482 | |
| 2000 | 55-59 | 216,612 | 51,636 | 21,820 | 85,550 | 106,121 | 17,844 | 499,582 | |
| 2000 | 60-64 | 191,935 | 13,323 | 3,974 | 74,654 | 96,180 | 13,248 | 393,313 | |
| 2000 | 65-69 | 157,195 | 8,389 | 2,856 | 42,583 | 107,123 | 6,955 | 325,102 | |
| 2000 | 70-74 | 120,298 | 3,840 | 1,345 | 35,090 | 101,474 | 870 | 262,917 | |
| 2000 | 75+ | 120,173 | 1,870 | 1,973 | 55,811 | 169,980 | 5,732 | 355,540 | |
| 2000 | Total | 1,702,210 | 3,475,339 | 1,537,782 | 1,081,043 | 1,530,274 | 609,520 | 9,936,168 | |

| | | Hispanic Households | | | | | | | |
|------|-------|------------------------|----------------------|------------------|------------------|------------------|---------------------|-------------------|--|
| Year | Age | Married No Kids <18 | Married With Kids | Single Parent | Other Family | Single Person | Other Non-Family | Total | |
| 2005 | 15-19 | 7,782 | 23,150 | 23,097 | 107,438 | 13,685 | 40,956 | 216,107 | |
| 2005 | 20-24 | 80,587 | 239,783 | 215,112 | 186,872 | 134,664 | 135,541 | 992,559 | |
| 2005 | 25-29 | 123,946 | 643,961 | 309,256 | 129,822 | 192,099 | 157,765 | 1,556,849 | |
| 2005 | 30-34 | 146,846 | 913,096 | 358,994 | 76,161 | 173,693 | 83,962 | 1,752,753 | |
| 2005 | 35-39 | 87,289 | 853,281 | 354,778 | 88,534 | 167,239 | 101,202 | 1,652,322 | |
| 2005 | 40-44 | 170,791 | 735,595 | 280,185 | 86,602 | 140,692 | 63,347 | 1,477,212 | |
| 2005 | 45-49 | 208,103 | 469,001 | 163,645 | 146,538 | 169,793 | 43,425 | 1,200,504 | |
| 2005 | 50-54 | 292,793 | 227,245 | 94,922 | 122,452 | 159,872 | 36,778 | 934,061 | |
| 2005 | 55-59 | 314,096 | 74,874 | 31,639 | 124,051 | 153,879 | 25,875 | 724,413 | |
| 2005 | 60-64 | 252,419 | 17,521 | 5,226 | 98,179 | 126,489 | 17,422 | 517,256 | |
| 2005 | 65-69 | 198,093 | 10,572 | 3,600 | 53,663 | 134,994 | 8,764 | 409,686 | |
| 2005 | 70-74 | 145,233 | 4,636 | 1,624 | 42,364 | 122,508 | 1,050 | 317,414 | |
| 2005 | 75+ | 168,145 | 2,616 | 2,761 | 78,090 | 237,835 | 8,021 | 497,468 | |
| 2005 | Total | 2,196,123 | 4,215,328 | 1,844,838 | 1,340,765 | 1,927,440 | 724,109 | 12,248,604 | |

Appendix A (continued)

**Revised 2006 Joint Center Interim Household Projections by Family Type and Age
(based on 1.2 million annual net immigrants and 2005 headship and family type held constant)**

| | | Hispanic Households | | | | | | Total |
|------|-------|------------------------|----------------------|------------------|------------------|------------------|---------------------|-------------------|
| Year | Age | Married No Kids <18 | Married With Kids | Single Parent | Other Family | Single Person | Other Non-Family | |
| 2010 | 15-19 | 9,272 | 27,582 | 27,519 | 128,012 | 16,306 | 48,798 | 257,490 |
| 2010 | 20-24 | 91,291 | 271,632 | 243,684 | 211,694 | 152,551 | 153,545 | 1,124,397 |
| 2010 | 25-29 | 133,244 | 692,266 | 332,454 | 139,560 | 206,509 | 169,600 | 1,673,632 |
| 2010 | 30-34 | 165,258 | 1,027,582 | 404,006 | 85,710 | 195,471 | 94,490 | 1,972,517 |
| 2010 | 35-39 | 102,723 | 1,004,152 | 417,507 | 104,188 | 196,809 | 119,096 | 1,944,474 |
| 2010 | 40-44 | 199,714 | 860,164 | 327,633 | 101,267 | 164,518 | 74,075 | 1,727,370 |
| 2010 | 45-49 | 262,703 | 592,052 | 206,581 | 184,985 | 214,341 | 54,818 | 1,515,481 |
| 2010 | 50-54 | 388,433 | 301,474 | 125,928 | 162,451 | 212,093 | 48,791 | 1,239,170 |
| 2010 | 55-59 | 416,729 | 99,339 | 41,978 | 164,586 | 204,160 | 34,330 | 961,122 |
| 2010 | 60-64 | 361,430 | 25,088 | 7,483 | 140,579 | 181,115 | 24,947 | 740,641 |
| 2010 | 65-69 | 258,596 | 13,801 | 4,699 | 70,053 | 176,224 | 11,441 | 534,815 |
| 2010 | 70-74 | 183,133 | 5,845 | 2,048 | 53,419 | 154,477 | 1,324 | 400,246 |
| 2010 | 75+ | 222,372 | 3,460 | 3,652 | 103,274 | 314,537 | 10,607 | 657,902 |
| 2010 | Total | 2,794,898 | 4,924,438 | 2,145,170 | 1,649,778 | 2,389,111 | 845,862 | 14,749,257 |

| | | Hispanic Households | | | | | | Total |
|------|-------|------------------------|----------------------|------------------|------------------|------------------|---------------------|-------------------|
| Year | Age | Married No Kids <18 | Married With Kids | Single Parent | Other Family | Single Person | Other Non-Family | |
| 2015 | 15-19 | 9,877 | 29,383 | 29,316 | 136,368 | 17,370 | 51,984 | 274,299 |
| 2015 | 20-24 | 106,056 | 315,564 | 283,096 | 245,931 | 177,223 | 178,378 | 1,306,249 |
| 2015 | 25-29 | 148,312 | 770,553 | 370,051 | 155,343 | 229,862 | 188,779 | 1,862,900 |
| 2015 | 30-34 | 175,940 | 1,093,999 | 430,118 | 91,250 | 208,105 | 100,597 | 2,100,009 |
| 2015 | 35-39 | 114,615 | 1,120,407 | 465,843 | 116,250 | 219,595 | 132,884 | 2,169,594 |
| 2015 | 40-44 | 233,284 | 1,004,752 | 382,706 | 118,289 | 192,172 | 86,527 | 2,017,730 |
| 2015 | 45-49 | 305,530 | 688,574 | 240,260 | 215,143 | 249,285 | 63,755 | 1,762,547 |
| 2015 | 50-54 | 487,203 | 378,132 | 157,948 | 203,758 | 266,024 | 61,198 | 1,554,263 |
| 2015 | 55-59 | 548,696 | 130,797 | 55,271 | 216,706 | 268,812 | 45,201 | 1,265,483 |
| 2015 | 60-64 | 475,417 | 33,000 | 9,842 | 184,914 | 238,234 | 32,814 | 974,222 |
| 2015 | 65-69 | 366,323 | 19,551 | 6,657 | 99,235 | 249,636 | 16,207 | 757,609 |
| 2015 | 70-74 | 238,210 | 7,603 | 2,663 | 69,484 | 200,935 | 1,722 | 520,618 |
| 2015 | 75+ | 288,623 | 4,491 | 4,740 | 134,043 | 408,247 | 13,767 | 853,911 |
| 2015 | Total | 3,498,086 | 5,596,805 | 2,438,511 | 1,986,717 | 2,925,502 | 973,814 | 17,419,434 |

Appendix A (continued)

**Revised 2006 Joint Center Interim Household Projections by Family Type and Age
(based on 1.2 million annual net immigrants and 2005 headship and family type held constant)**

| Year | Age | Hispanic Households | | | | Single Person | Other Non-Family | Total |
|------|-------|------------------------|----------------------|------------------|------------------|------------------|---------------------|-------------------|
| | | Married No Kids <18 | Married With Kids | Single Parent | Other Family | | | |
| 2020 | 15-19 | 11,278 | 33,551 | 33,475 | 155,714 | 19,835 | 59,358 | 313,211 |
| 2020 | 20-24 | 112,048 | 333,392 | 299,090 | 259,826 | 187,236 | 188,456 | 1,380,048 |
| 2020 | 25-29 | 169,523 | 880,754 | 422,974 | 177,559 | 262,736 | 215,778 | 2,129,324 |
| 2020 | 30-34 | 193,866 | 1,205,468 | 473,944 | 100,548 | 229,309 | 110,847 | 2,313,982 |
| 2020 | 35-39 | 121,508 | 1,187,790 | 493,860 | 123,242 | 232,801 | 140,876 | 2,300,078 |
| 2020 | 40-44 | 259,203 | 1,116,382 | 425,225 | 131,432 | 213,523 | 96,140 | 2,241,905 |
| 2020 | 45-49 | 355,438 | 801,051 | 279,506 | 250,286 | 290,005 | 74,170 | 2,050,457 |
| 2020 | 50-54 | 564,744 | 438,314 | 183,087 | 236,187 | 308,363 | 70,938 | 1,801,633 |
| 2020 | 55-59 | 685,123 | 163,318 | 69,013 | 270,587 | 335,649 | 56,440 | 1,580,131 |
| 2020 | 60-64 | 622,488 | 43,209 | 12,887 | 242,118 | 311,933 | 42,965 | 1,275,601 |
| 2020 | 65-69 | 479,467 | 25,589 | 8,713 | 129,885 | 326,740 | 21,213 | 991,608 |
| 2020 | 70-74 | 336,245 | 10,732 | 3,759 | 98,081 | 283,631 | 2,431 | 734,879 |
| 2020 | 75+ | 377,416 | 5,872 | 6,198 | 175,281 | 533,841 | 18,003 | 1,116,611 |
| 2020 | Total | 4,288,350 | 6,245,425 | 2,711,730 | 2,350,746 | 3,535,603 | 1,097,614 | 20,229,468 |

Appendix B

Revised 2006 Joint Center Interim Household Projections by Tenure and Age
(based on 1.2 million annual net immigrants, 2005 headship and family type held constant, and cohort trended ownership rates)

| Year | Age | Total Households | | | | | | Total |
|------|-------|------------------|------------|------------|------------|------------|------------|-------------|
| | | Owners | Owners | Owners | Renters | Renters | Renters | Households |
| | | Family | Non-Family | Total | Family | Non-Family | Total | Total |
| 2000 | 15-19 | 108,812 | 31,436 | 140,248 | 425,845 | 295,814 | 721,659 | 861,907 |
| 2000 | 20-24 | 641,003 | 222,714 | 863,718 | 2,387,122 | 2,264,934 | 4,652,055 | 5,515,773 |
| 2000 | 25-29 | 2,520,340 | 620,371 | 3,140,712 | 3,291,865 | 2,397,693 | 5,689,557 | 8,830,269 |
| 2000 | 30-34 | 4,715,891 | 918,987 | 5,634,879 | 3,106,121 | 1,905,703 | 5,011,823 | 10,646,702 |
| 2000 | 35-39 | 6,741,235 | 1,107,218 | 7,848,453 | 2,778,834 | 1,535,329 | 4,314,163 | 12,162,616 |
| 2000 | 40-44 | 7,442,871 | 1,214,343 | 8,657,214 | 2,189,932 | 1,388,824 | 3,578,756 | 12,235,970 |
| 2000 | 45-49 | 6,916,789 | 1,425,272 | 8,342,061 | 1,487,840 | 1,247,467 | 2,735,307 | 11,077,368 |
| 2000 | 50-54 | 6,233,466 | 1,602,453 | 7,835,919 | 939,865 | 1,126,522 | 2,066,387 | 9,902,306 |
| 2000 | 55-59 | 4,689,048 | 1,467,016 | 6,156,065 | 585,192 | 872,889 | 1,458,080 | 7,614,145 |
| 2000 | 60-64 | 3,914,369 | 1,423,871 | 5,338,240 | 403,483 | 705,213 | 1,108,696 | 6,446,936 |
| 2000 | 65-69 | 3,534,885 | 1,438,629 | 4,973,514 | 250,828 | 635,665 | 886,493 | 5,860,007 |
| 2000 | 70-74 | 3,017,293 | 1,680,197 | 4,697,490 | 201,898 | 638,126 | 840,024 | 5,537,514 |
| 2000 | 75+ | 4,283,295 | 4,312,092 | 8,595,388 | 363,620 | 1,787,086 | 2,150,705 | 10,746,093 |
| 2000 | Total | 54,759,300 | 17,464,600 | 72,223,900 | 18,412,442 | 16,801,264 | 35,213,706 | 107,437,606 |

| Year | Age | Total Households | | | | | | Total |
|------|-------|------------------|------------|------------|------------|------------|------------|-------------|
| | | Owners | Owners | Owners | Renters | Renters | Renters | Households |
| | | Family | Non-Family | Total | Family | Non-Family | Total | Total |
| 2005 | 15-19 | 114,011 | 33,130 | 147,141 | 456,043 | 310,095 | 766,138 | 913,279 |
| 2005 | 20-24 | 700,771 | 242,878 | 943,649 | 2,619,095 | 2,478,884 | 5,097,979 | 6,041,628 |
| 2005 | 25-29 | 2,559,124 | 624,960 | 3,184,084 | 3,432,127 | 2,461,115 | 5,893,242 | 9,077,326 |
| 2005 | 30-34 | 4,620,466 | 870,592 | 5,491,058 | 2,958,873 | 1,833,383 | 4,792,256 | 10,283,314 |
| 2005 | 35-39 | 6,305,916 | 1,000,279 | 7,306,195 | 2,503,743 | 1,424,707 | 3,928,450 | 11,234,645 |
| 2005 | 40-44 | 7,654,778 | 1,241,562 | 8,896,341 | 2,084,636 | 1,386,962 | 3,471,597 | 12,367,938 |
| 2005 | 45-49 | 7,729,243 | 1,630,157 | 9,359,401 | 1,612,927 | 1,339,862 | 2,952,788 | 12,312,189 |
| 2005 | 50-54 | 7,024,176 | 1,817,142 | 8,841,318 | 1,037,466 | 1,251,575 | 2,289,041 | 11,130,359 |
| 2005 | 55-59 | 6,079,950 | 1,933,301 | 8,013,250 | 678,376 | 1,067,329 | 1,745,706 | 9,758,956 |
| 2005 | 60-64 | 4,748,659 | 1,746,720 | 6,495,379 | 430,405 | 809,465 | 1,239,870 | 7,735,249 |
| 2005 | 65-69 | 3,759,926 | 1,573,015 | 5,332,941 | 261,019 | 638,111 | 899,130 | 6,232,071 |
| 2005 | 70-74 | 2,928,014 | 1,657,112 | 4,585,126 | 159,253 | 574,443 | 733,696 | 5,318,822 |
| 2005 | 75+ | 4,717,847 | 4,893,117 | 9,610,964 | 315,122 | 1,706,382 | 2,021,504 | 11,632,468 |
| 2005 | Total | 58,942,880 | 19,263,966 | 78,206,846 | 18,549,086 | 17,282,312 | 35,831,398 | 114,038,244 |

Appendix B (continued)

**Revised 2006 Joint Center Interim Household Projections by Tenure and Age
(based on 1.2 million annual net immigrants, 2005 headship and family type held constant, and cohort trended ownership rates)**

| Year | Age | Total Households | | | | | | Total Households Total |
|------|-------|------------------|-------------------|--------------|----------------|--------------------|---------------|------------------------|
| | | Owners Family | Owners Non-Family | Owners Total | Renters Family | Renters Non-Family | Renters Total | |
| | | 2010 | 15-19 | 115,044 | 34,050 | 149,095 | 476,341 | |
| 2010 | 20-24 | 726,229 | 250,214 | 976,443 | 2,776,412 | 2,583,045 | 5,359,457 | 6,335,900 |
| 2010 | 25-29 | 2,794,313 | 681,477 | 3,475,790 | 3,750,904 | 2,687,644 | 6,438,548 | 9,914,338 |
| 2010 | 30-34 | 4,705,969 | 881,719 | 5,587,688 | 3,100,051 | 1,888,536 | 4,988,587 | 10,576,275 |
| 2010 | 35-39 | 6,195,819 | 954,674 | 7,150,493 | 2,363,957 | 1,381,210 | 3,745,167 | 10,895,660 |
| 2010 | 40-44 | 7,192,432 | 1,129,208 | 8,321,639 | 1,836,413 | 1,303,344 | 3,139,758 | 11,461,397 |
| 2010 | 45-49 | 7,964,897 | 1,668,203 | 9,633,101 | 1,492,420 | 1,337,283 | 2,829,702 | 12,462,803 |
| 2010 | 50-54 | 7,868,688 | 2,072,566 | 9,941,254 | 1,094,841 | 1,341,397 | 2,436,238 | 12,377,492 |
| 2010 | 55-59 | 6,874,991 | 2,194,111 | 9,069,102 | 734,209 | 1,187,892 | 1,922,101 | 10,991,203 |
| 2010 | 60-64 | 6,177,530 | 2,306,522 | 8,484,052 | 468,947 | 981,686 | 1,450,633 | 9,934,685 |
| 2010 | 65-69 | 4,586,405 | 1,938,447 | 6,524,852 | 260,189 | 729,789 | 989,978 | 7,514,830 |
| 2010 | 70-74 | 3,147,912 | 1,826,315 | 4,974,226 | 161,139 | 572,223 | 733,363 | 5,707,589 |
| 2010 | 75+ | 5,025,865 | 5,276,350 | 10,302,215 | 260,327 | 1,646,891 | 1,907,218 | 12,209,433 |
| 2010 | Total | 63,376,095 | 21,213,855 | 84,589,950 | 18,776,149 | 17,953,863 | 36,730,012 | 121,319,962 |

| Year | Age | Total Households | | | | | | Total Households Total |
|------|-------|------------------|-------------------|--------------|----------------|--------------------|---------------|------------------------|
| | | Owners Family | Owners Non-Family | Owners Total | Renters Family | Renters Non-Family | Renters Total | |
| | | 2015 | 15-19 | 109,339 | 32,905 | 142,243 | 463,091 | |
| 2015 | 20-24 | 720,691 | 245,263 | 965,954 | 2,856,034 | 2,584,835 | 5,440,869 | 6,406,823 |
| 2015 | 25-29 | 2,886,433 | 699,049 | 3,585,482 | 3,969,963 | 2,805,046 | 6,775,009 | 10,360,491 |
| 2015 | 30-34 | 5,116,706 | 957,318 | 6,074,024 | 3,380,756 | 2,057,857 | 5,438,613 | 11,512,637 |
| 2015 | 35-39 | 6,316,477 | 968,210 | 7,284,686 | 2,497,192 | 1,428,205 | 3,925,398 | 11,210,084 |
| 2015 | 40-44 | 7,074,833 | 1,079,088 | 8,153,920 | 1,699,458 | 1,280,730 | 2,980,189 | 11,134,109 |
| 2015 | 45-49 | 7,488,135 | 1,524,342 | 9,012,477 | 1,293,374 | 1,264,980 | 2,558,354 | 11,570,831 |
| 2015 | 50-54 | 8,107,364 | 2,114,393 | 10,221,757 | 968,174 | 1,344,818 | 2,312,992 | 12,534,749 |
| 2015 | 55-59 | 7,704,505 | 2,493,550 | 10,198,054 | 764,456 | 1,274,467 | 2,038,924 | 12,236,978 |
| 2015 | 60-64 | 6,989,992 | 2,618,765 | 9,608,758 | 497,409 | 1,098,102 | 1,595,510 | 11,204,268 |
| 2015 | 65-69 | 5,971,182 | 2,562,901 | 8,534,083 | 260,866 | 878,152 | 1,139,018 | 9,673,101 |
| 2015 | 70-74 | 3,855,098 | 2,255,063 | 6,110,161 | 153,000 | 652,643 | 805,643 | 6,915,804 |
| 2015 | 75+ | 5,372,584 | 5,758,832 | 11,131,415 | 263,074 | 1,612,844 | 1,875,919 | 13,007,334 |
| 2015 | Total | 67,713,339 | 23,309,676 | 91,023,015 | 19,066,847 | 18,580,631 | 37,647,478 | 128,670,493 |

Appendix B (continued)

**Revised 2006 Joint Center Interim Household Projections by Tenure and Age
(based on 1.2 million annual net immigrants, 2005 headship and family type held constant, and cohort trended ownership rates)**

| Year | Age | Total Households | | | | | | Total |
|------|-------|------------------|----------------------|-----------------|-------------------|-----------------------|------------------|---------------------|
| | | Owners Family | Owners Non-Family | Owners Total | Renters Family | Renters Non-Family | Renters Total | Households Total |
| 2020 | 15-19 | 115,750 | 35,147 | 150,897 | 501,008 | 315,762 | 816,770 | 967,667 |
| 2020 | 20-24 | 680,916 | 229,502 | 910,418 | 2,759,211 | 2,455,175 | 5,214,386 | 6,124,804 |
| 2020 | 25-29 | 2,860,749 | 683,273 | 3,544,022 | 4,082,831 | 2,822,047 | 6,904,878 | 10,448,900 |
| 2020 | 30-34 | 5,288,751 | 984,663 | 6,273,415 | 3,597,383 | 2,153,919 | 5,751,301 | 12,024,716 |
| 2020 | 35-39 | 6,853,345 | 1,050,196 | 7,903,541 | 2,725,113 | 1,554,155 | 4,279,268 | 12,182,809 |
| 2020 | 40-44 | 7,222,291 | 1,094,821 | 8,317,112 | 1,810,645 | 1,332,785 | 3,143,430 | 11,460,542 |
| 2020 | 45-49 | 7,372,177 | 1,462,612 | 8,834,790 | 1,171,908 | 1,249,922 | 2,421,829 | 11,256,619 |
| 2020 | 50-54 | 7,632,530 | 1,933,181 | 9,565,711 | 801,628 | 1,284,759 | 2,086,387 | 11,652,098 |
| 2020 | 55-59 | 7,947,626 | 2,541,533 | 10,489,159 | 642,278 | 1,285,573 | 1,927,851 | 12,417,010 |
| 2020 | 60-64 | 7,843,121 | 2,974,737 | 10,817,858 | 497,545 | 1,179,520 | 1,677,065 | 12,494,923 |
| 2020 | 65-69 | 6,771,348 | 2,920,368 | 9,691,716 | 267,167 | 983,171 | 1,250,338 | 10,942,054 |
| 2020 | 70-74 | 5,037,385 | 2,987,119 | 8,024,504 | 137,680 | 775,407 | 913,087 | 8,937,591 |
| 2020 | 75+ | 6,166,190 | 6,641,680 | 12,807,870 | 240,850 | 1,730,928 | 1,971,778 | 14,779,648 |
| 2020 | Total | 71,792,178 | 25,538,834 | 97,331,012 | 19,235,248 | 19,123,121 | 38,358,369 | 135,689,381 |

Appendix B (continued)

**Revised 2006 Joint Center Interim Household Projections by Tenure and Age
(based on 1.2 million annual net immigrants and 2005 headship and family type held constant)**

| | | Non-Hispanic White Alone Households | | | | | | NH-White |
|-------------|------------|--|------------------------------|-------------------------|---------------------------|-------------------------------|--------------------------|-----------------------------|
| Year | Age | Owners Family | Owners Non-Family | Owners Total | Renters Family | Renters Non-Family | Renters Total | Households Total |
| 2000 | 15-19 | 68,351 | 19,043 | 87,394 | 191,102 | 195,455 | 386,557 | 473,951 |
| 2000 | 20-24 | 485,492 | 182,500 | 667,991 | 1,218,075 | 1,591,755 | 2,809,831 | 3,477,822 |
| 2000 | 25-29 | 1,942,337 | 526,643 | 2,468,980 | 1,672,673 | 1,609,608 | 3,282,281 | 5,751,261 |
| 2000 | 30-34 | 3,671,673 | 753,217 | 4,424,889 | 1,496,173 | 1,270,094 | 2,766,268 | 7,191,157 |
| 2000 | 35-39 | 5,292,810 | 904,361 | 6,197,170 | 1,298,465 | 1,024,869 | 2,323,335 | 8,520,505 |
| 2000 | 40-44 | 5,877,053 | 1,002,199 | 6,879,252 | 1,101,300 | 902,760 | 2,004,060 | 8,883,312 |
| 2000 | 45-49 | 5,508,991 | 1,167,984 | 6,676,974 | 768,507 | 833,711 | 1,602,219 | 8,279,193 |
| 2000 | 50-54 | 5,059,684 | 1,336,225 | 6,395,909 | 495,445 | 766,935 | 1,262,380 | 7,658,289 |
| 2000 | 55-59 | 3,865,834 | 1,243,189 | 5,109,023 | 297,138 | 588,348 | 885,486 | 5,994,509 |
| 2000 | 60-64 | 3,229,027 | 1,194,799 | 4,423,827 | 214,828 | 457,875 | 672,702 | 5,096,529 |
| 2000 | 65-69 | 2,956,357 | 1,206,455 | 4,162,812 | 129,111 | 428,966 | 558,077 | 4,720,889 |
| 2000 | 70-74 | 2,596,312 | 1,459,214 | 4,055,526 | 116,518 | 451,498 | 568,016 | 4,623,542 |
| 2000 | 75+ | 3,764,356 | 3,873,416 | 7,637,772 | 268,679 | 1,457,542 | 1,726,221 | 9,363,993 |
| 2000 | Total | 44,318,276 | 14,869,243 | 59,187,519 | 9,268,015 | 11,579,418 | 20,847,433 | 80,034,952 |

| | | Non-Hispanic White Alone Households | | | | | | NH-White |
|-------------|------------|--|------------------------------|-------------------------|---------------------------|-------------------------------|--------------------------|-----------------------------|
| Year | Age | Owners Family | Owners Non-Family | Owners Total | Renters Family | Renters Non-Family | Renters Total | Households Total |
| 2005 | 15-19 | 69,173 | 19,272 | 88,445 | 193,812 | 198,146 | 391,958 | 480,403 |
| 2005 | 20-24 | 528,278 | 198,584 | 726,861 | 1,328,371 | 1,735,104 | 3,063,476 | 3,790,337 |
| 2005 | 25-29 | 1,928,370 | 522,856 | 2,451,226 | 1,666,353 | 1,601,407 | 3,267,760 | 5,718,986 |
| 2005 | 30-34 | 3,390,189 | 690,973 | 4,081,161 | 1,248,067 | 1,124,994 | 2,373,062 | 6,454,223 |
| 2005 | 35-39 | 4,668,100 | 780,232 | 5,448,332 | 1,016,856 | 883,723 | 1,900,579 | 7,348,911 |
| 2005 | 40-44 | 5,797,963 | 991,537 | 6,789,499 | 910,509 | 839,749 | 1,750,259 | 8,539,758 |
| 2005 | 45-49 | 5,966,917 | 1,305,428 | 7,272,345 | 755,940 | 838,279 | 1,594,219 | 8,866,564 |
| 2005 | 50-54 | 5,514,536 | 1,485,698 | 7,000,234 | 507,330 | 794,167 | 1,301,497 | 8,301,731 |
| 2005 | 55-59 | 4,886,326 | 1,605,367 | 6,491,692 | 315,949 | 683,422 | 999,372 | 7,491,064 |
| 2005 | 60-64 | 3,878,766 | 1,453,647 | 5,332,413 | 214,447 | 510,648 | 725,095 | 6,057,508 |
| 2005 | 65-69 | 3,083,399 | 1,286,426 | 4,369,825 | 111,654 | 407,079 | 518,733 | 4,888,558 |
| 2005 | 70-74 | 2,441,263 | 1,395,233 | 3,836,496 | 78,556 | 379,537 | 458,093 | 4,294,589 |
| 2005 | 75+ | 4,065,062 | 4,299,489 | 8,364,551 | 212,381 | 1,354,532 | 1,566,913 | 9,931,464 |
| 2005 | Total | 46,218,339 | 16,034,742 | 62,253,081 | 8,560,228 | 11,350,787 | 19,911,015 | 82,164,096 |

Appendix B (continued)

**Revised 2006 Joint Center Interim Household Projections by Tenure and Age
(based on 1.2 million annual net immigrants and 2005 headship and family type held constant)**

| | | Non-Hispanic White Alone Households | | | | | | NH-White |
|------|-------|-------------------------------------|----------------------|-----------------|-------------------|-----------------------|------------------|---------------------|
| Year | Age | Owners Family | Owners Non-Family | Owners Total | Renters Family | Renters Non-Family | Renters Total | Households Total |
| 2010 | 15-19 | 66,015 | 18,392 | 84,407 | 184,996 | 189,127 | 374,123 | 458,530 |
| 2010 | 20-24 | 535,598 | 201,335 | 736,932 | 1,347,011 | 1,759,391 | 3,106,403 | 3,843,335 |
| 2010 | 25-29 | 2,099,905 | 569,365 | 2,669,270 | 1,815,069 | 1,744,146 | 3,559,215 | 6,228,485 |
| 2010 | 30-34 | 3,372,127 | 687,292 | 4,059,419 | 1,241,995 | 1,119,226 | 2,361,221 | 6,420,640 |
| 2010 | 35-39 | 4,305,837 | 714,459 | 5,020,296 | 804,406 | 781,281 | 1,585,687 | 6,605,983 |
| 2010 | 40-44 | 5,121,819 | 858,063 | 5,979,882 | 674,921 | 724,338 | 1,399,259 | 7,379,141 |
| 2010 | 45-49 | 5,893,773 | 1,289,640 | 7,183,412 | 576,706 | 773,591 | 1,350,298 | 8,533,710 |
| 2010 | 50-54 | 5,986,187 | 1,657,488 | 7,643,675 | 471,344 | 787,319 | 1,258,663 | 8,902,338 |
| 2010 | 55-59 | 5,344,146 | 1,787,007 | 7,131,153 | 307,842 | 699,637 | 1,007,479 | 8,138,632 |
| 2010 | 60-64 | 4,926,503 | 1,881,413 | 6,807,915 | 207,373 | 582,287 | 789,661 | 7,597,576 |
| 2010 | 65-69 | 3,729,118 | 1,574,447 | 5,303,564 | 90,097 | 449,888 | 539,986 | 5,843,550 |
| 2010 | 70-74 | 2,574,267 | 1,501,413 | 4,075,679 | 60,270 | 354,155 | 414,426 | 4,490,105 |
| 2010 | 75+ | 4,215,229 | 4,533,608 | 8,748,837 | 159,580 | 1,249,113 | 1,408,693 | 10,157,530 |
| 2010 | Total | 48,170,522 | 17,273,921 | 65,444,443 | 7,941,612 | 11,213,500 | 19,155,112 | 84,599,555 |

| | | Non-Hispanic White Alone Households | | | | | | NH-White |
|------|-------|-------------------------------------|----------------------|-----------------|-------------------|-----------------------|------------------|---------------------|
| Year | Age | Owners Family | Owners Non-Family | Owners Total | Renters Family | Renters Non-Family | Renters Total | Households Total |
| 2015 | 15-19 | 60,694 | 16,910 | 77,604 | 170,290 | 174,052 | 344,342 | 421,946 |
| 2015 | 20-24 | 510,783 | 192,007 | 702,790 | 1,286,201 | 1,679,541 | 2,965,742 | 3,668,532 |
| 2015 | 25-29 | 2,126,543 | 576,588 | 2,703,131 | 1,841,626 | 1,768,359 | 3,609,985 | 6,313,116 |
| 2015 | 30-34 | 3,663,774 | 746,734 | 4,410,507 | 1,353,878 | 1,217,774 | 2,571,653 | 6,982,160 |
| 2015 | 35-39 | 4,279,639 | 710,112 | 4,989,752 | 804,037 | 777,852 | 1,581,888 | 6,571,640 |
| 2015 | 40-44 | 4,716,886 | 783,947 | 5,500,833 | 499,044 | 639,904 | 1,138,948 | 6,639,781 |
| 2015 | 45-49 | 5,202,519 | 1,116,207 | 6,318,726 | 394,927 | 668,642 | 1,063,569 | 7,382,295 |
| 2015 | 50-54 | 5,906,761 | 1,633,247 | 7,540,008 | 313,580 | 721,760 | 1,035,340 | 8,575,348 |
| 2015 | 55-59 | 5,802,092 | 1,987,465 | 7,789,557 | 266,705 | 682,557 | 949,262 | 8,738,819 |
| 2015 | 60-64 | 5,394,813 | 2,093,076 | 7,487,889 | 194,907 | 589,379 | 784,286 | 8,272,175 |
| 2015 | 65-69 | 4,747,458 | 2,040,183 | 6,787,641 | 59,384 | 507,634 | 567,018 | 7,354,659 |
| 2015 | 70-74 | 3,127,674 | 1,843,631 | 4,971,306 | 38,889 | 386,656 | 425,544 | 5,396,850 |
| 2015 | 75+ | 4,401,454 | 4,831,100 | 9,232,554 | 131,095 | 1,160,126 | 1,291,221 | 10,523,775 |
| 2015 | Total | 49,941,090 | 18,571,207 | 68,512,297 | 7,354,563 | 10,974,236 | 18,328,799 | 86,841,096 |

Appendix B (continued)

**Revised 2006 Joint Center Interim Household Projections by Tenure and Age
(based on 1.2 million annual net immigrants and 2005 headship and family type held constant)**

| Year | Age | Non-Hispanic White Alone Households | | | | | | NH-White Households Total |
|------|-------|-------------------------------------|-------------------|--------------|----------------|--------------------|---------------|---------------------------|
| | | Owners Family | Owners Non-Family | Owners Total | Renters Family | Renters Non-Family | Renters Total | |
| 2020 | 15-19 | 61,802 | 17,219 | 79,021 | 173,721 | 177,496 | 351,217 | 430,238 |
| 2020 | 20-24 | 469,535 | 176,502 | 646,037 | 1,184,576 | 1,546,245 | 2,730,821 | 3,376,858 |
| 2020 | 25-29 | 2,028,361 | 549,968 | 2,578,329 | 1,761,730 | 1,689,745 | 3,451,475 | 6,029,804 |
| 2020 | 30-34 | 3,708,094 | 755,767 | 4,463,861 | 1,377,139 | 1,235,200 | 2,612,339 | 7,076,200 |
| 2020 | 35-39 | 4,644,557 | 770,662 | 5,415,220 | 880,074 | 846,367 | 1,726,440 | 7,141,660 |
| 2020 | 40-44 | 4,688,379 | 779,209 | 5,467,588 | 503,055 | 637,955 | 1,141,010 | 6,608,598 |
| 2020 | 45-49 | 4,788,541 | 1,018,264 | 5,806,805 | 253,628 | 589,524 | 843,152 | 6,649,957 |
| 2020 | 50-54 | 5,213,706 | 1,414,561 | 6,628,267 | 174,240 | 625,303 | 799,543 | 7,427,810 |
| 2020 | 55-59 | 5,725,924 | 1,956,075 | 7,681,999 | 128,016 | 619,419 | 747,435 | 8,429,434 |
| 2020 | 60-64 | 5,865,495 | 2,325,200 | 8,190,694 | 149,347 | 561,267 | 710,615 | 8,901,309 |
| 2020 | 65-69 | 5,212,659 | 2,273,839 | 7,486,497 | 38,444 | 509,454 | 547,899 | 8,034,396 |
| 2020 | 70-74 | 4,000,592 | 2,396,390 | 6,396,982 | 6,126 | 425,639 | 431,765 | 6,828,747 |
| 2020 | 75+ | 4,943,704 | 5,484,104 | 10,427,807 | 94,657 | 1,175,715 | 1,270,373 | 11,698,180 |
| 2020 | Total | 51,351,349 | 19,917,759 | 71,269,108 | 6,724,753 | 10,639,330 | 17,364,083 | 88,633,191 |

Appendix B (continued)

**Revised 2006 Joint Center Interim Household Projections by Tenure and Age
(based on 1.2 million annual net immigrants and 2005 headship and family type held constant)**

| | | Total Minority Households | | | | | | Minority |
|-------------|------------|----------------------------------|------------------------------|-------------------------|---------------------------|-------------------------------|--------------------------|-----------------------------|
| Year | Age | Owners Family | Owners Non-Family | Owners Total | Renters Family | Renters Non-Family | Renters Total | Households Total |
| 2000 | 15-19 | 41,187 | 12,627 | 53,814 | 234,017 | 100,125 | 334,142 | 387,956 |
| 2000 | 20-24 | 156,900 | 40,215 | 197,115 | 1,167,658 | 673,178 | 1,840,836 | 2,037,951 |
| 2000 | 25-29 | 582,295 | 93,092 | 675,387 | 1,614,900 | 788,721 | 2,403,621 | 3,079,008 |
| 2000 | 30-34 | 1,050,947 | 165,767 | 1,216,714 | 1,603,219 | 635,612 | 2,238,831 | 3,455,545 |
| 2000 | 35-39 | 1,456,502 | 202,961 | 1,659,463 | 1,472,292 | 510,356 | 1,982,648 | 3,642,111 |
| 2000 | 40-44 | 1,573,571 | 211,899 | 1,785,470 | 1,080,879 | 486,309 | 1,567,188 | 3,352,658 |
| 2000 | 45-49 | 1,413,353 | 257,290 | 1,670,642 | 713,778 | 413,754 | 1,127,533 | 2,798,175 |
| 2000 | 50-54 | 1,175,478 | 265,426 | 1,440,904 | 442,724 | 360,389 | 803,113 | 2,244,017 |
| 2000 | 55-59 | 822,407 | 222,399 | 1,044,806 | 288,861 | 285,969 | 574,830 | 1,619,636 |
| 2000 | 60-64 | 684,603 | 228,097 | 912,700 | 189,394 | 248,313 | 437,707 | 1,350,407 |
| 2000 | 65-69 | 576,453 | 231,216 | 807,669 | 123,792 | 207,657 | 331,449 | 1,139,118 |
| 2000 | 70-74 | 416,670 | 218,114 | 634,785 | 89,691 | 189,497 | 279,187 | 913,972 |
| 2000 | 75+ | 510,077 | 426,834 | 936,912 | 103,803 | 341,386 | 445,188 | 1,382,100 |
| 2000 | Total | 10,460,443 | 2,575,938 | 13,036,381 | 9,125,008 | 5,241,265 | 14,366,273 | 27,402,654 |

| | | Total Minority Households | | | | | | Minority |
|-------------|------------|----------------------------------|------------------------------|-------------------------|---------------------------|-------------------------------|--------------------------|-----------------------------|
| Year | Age | Owners Family | Owners Non-Family | Owners Total | Renters Family | Renters Non-Family | Renters Total | Households Total |
| 2005 | 15-19 | 45,529 | 14,086 | 59,615 | 261,540 | 111,721 | 373,261 | 432,876 |
| 2005 | 20-24 | 173,439 | 44,126 | 217,565 | 1,289,778 | 743,948 | 2,033,726 | 2,251,291 |
| 2005 | 25-29 | 634,235 | 101,291 | 735,527 | 1,762,293 | 860,521 | 2,622,813 | 3,358,340 |
| 2005 | 30-34 | 1,239,493 | 179,684 | 1,419,177 | 1,701,590 | 708,324 | 2,409,914 | 3,829,091 |
| 2005 | 35-39 | 1,649,073 | 220,559 | 1,869,632 | 1,475,630 | 540,472 | 2,016,102 | 3,885,734 |
| 2005 | 40-44 | 1,866,274 | 249,921 | 2,116,195 | 1,164,668 | 547,317 | 1,711,985 | 3,828,180 |
| 2005 | 45-49 | 1,768,271 | 324,479 | 2,092,750 | 851,042 | 501,833 | 1,352,875 | 3,445,625 |
| 2005 | 50-54 | 1,512,098 | 330,187 | 1,842,285 | 527,678 | 458,665 | 986,343 | 2,828,628 |
| 2005 | 55-59 | 1,192,130 | 325,806 | 1,517,936 | 363,921 | 386,035 | 749,956 | 2,267,892 |
| 2005 | 60-64 | 866,729 | 291,047 | 1,157,776 | 219,122 | 300,843 | 519,965 | 1,677,741 |
| 2005 | 65-69 | 673,629 | 285,491 | 959,119 | 152,263 | 232,130 | 384,394 | 1,343,513 |
| 2005 | 70-74 | 483,211 | 259,439 | 742,650 | 84,237 | 197,346 | 281,583 | 1,024,233 |
| 2005 | 75+ | 642,868 | 580,671 | 1,223,539 | 112,658 | 364,807 | 477,465 | 1,701,004 |
| 2005 | Total | 12,746,978 | 3,206,787 | 15,953,765 | 9,966,421 | 5,953,962 | 15,920,383 | 31,874,148 |

Appendix B (continued)

**Revised 2006 Joint Center Interim Household Projections by Tenure and Age
(based on 1.2 million annual net immigrants and 2005 headship and family type held constant)**

| | | Total Minority Households | | | | | | Minority |
|-------------|------------|----------------------------------|----------------------|-----------------|-------------------|-----------------------|------------------|---------------------|
| Year | Age | Owners Family | Owners Non-Family | Owners Total | Renters Family | Renters Non-Family | Renters Total | Households Total |
| 2010 | 15-19 | 49,676 | 15,882 | 65,558 | 290,698 | 123,571 | 414,269 | 479,827 |
| 2010 | 20-24 | 191,370 | 48,661 | 240,032 | 1,428,662 | 823,872 | 2,252,533 | 2,492,565 |
| 2010 | 25-29 | 696,151 | 110,926 | 807,077 | 1,934,092 | 944,684 | 2,878,776 | 3,685,853 |
| 2010 | 30-34 | 1,341,401 | 194,282 | 1,535,684 | 1,850,497 | 769,455 | 2,619,951 | 4,155,635 |
| 2010 | 35-39 | 1,903,699 | 240,894 | 2,144,593 | 1,545,834 | 599,250 | 2,145,084 | 4,289,677 |
| 2010 | 40-44 | 2,083,066 | 271,583 | 2,354,649 | 1,149,039 | 578,568 | 1,727,607 | 4,082,256 |
| 2010 | 45-49 | 2,078,675 | 378,592 | 2,457,266 | 908,163 | 563,663 | 1,471,827 | 3,929,093 |
| 2010 | 50-54 | 1,885,358 | 413,558 | 2,298,916 | 620,640 | 555,598 | 1,176,238 | 3,475,154 |
| 2010 | 55-59 | 1,530,136 | 404,586 | 1,934,722 | 427,076 | 490,773 | 917,849 | 2,852,571 |
| 2010 | 60-64 | 1,246,888 | 422,383 | 1,669,271 | 265,713 | 402,125 | 667,838 | 2,337,109 |
| 2010 | 65-69 | 852,203 | 361,898 | 1,214,101 | 175,176 | 282,003 | 457,179 | 1,671,280 |
| 2010 | 70-74 | 569,740 | 322,414 | 892,154 | 104,774 | 220,556 | 325,330 | 1,217,484 |
| 2010 | 75+ | 801,441 | 730,042 | 1,531,483 | 109,942 | 410,478 | 520,420 | 2,051,903 |
| 2010 | Total | 15,229,805 | 3,915,702 | 19,145,507 | 10,810,305 | 6,764,595 | 17,574,900 | 36,720,407 |

| | | Total Minority Households | | | | | | Minority |
|-------------|------------|----------------------------------|----------------------|-----------------|-------------------|-----------------------|------------------|---------------------|
| Year | Age | Owners Family | Owners Non-Family | Owners Total | Renters Family | Renters Non-Family | Renters Total | Households Total |
| 2015 | 15-19 | 49,166 | 16,185 | 65,351 | 292,280 | 123,707 | 415,987 | 481,338 |
| 2015 | 20-24 | 210,674 | 53,077 | 263,751 | 1,569,067 | 905,473 | 2,474,540 | 2,738,291 |
| 2015 | 25-29 | 761,003 | 121,242 | 882,245 | 2,127,224 | 1,037,906 | 3,165,130 | 4,047,375 |
| 2015 | 30-34 | 1,457,463 | 209,952 | 1,667,416 | 2,022,347 | 840,715 | 2,863,061 | 4,530,477 |
| 2015 | 35-39 | 2,048,308 | 258,548 | 2,306,856 | 1,681,685 | 649,903 | 2,331,588 | 4,638,444 |
| 2015 | 40-44 | 2,372,644 | 295,824 | 2,668,468 | 1,185,717 | 640,143 | 1,825,860 | 4,494,328 |
| 2015 | 45-49 | 2,296,096 | 408,887 | 2,704,983 | 887,967 | 595,586 | 1,483,553 | 4,188,536 |
| 2015 | 50-54 | 2,205,329 | 480,137 | 2,685,466 | 649,868 | 624,067 | 1,273,935 | 3,959,401 |
| 2015 | 55-59 | 1,902,341 | 503,413 | 2,405,754 | 497,823 | 594,582 | 1,092,405 | 3,498,159 |
| 2015 | 60-64 | 1,591,954 | 522,743 | 2,114,697 | 305,727 | 511,669 | 817,396 | 2,932,093 |
| 2015 | 65-69 | 1,217,611 | 520,034 | 1,737,645 | 207,595 | 373,202 | 580,797 | 2,318,442 |
| 2015 | 70-74 | 721,964 | 407,897 | 1,129,861 | 119,571 | 269,522 | 389,093 | 1,518,954 |
| 2015 | 75+ | 962,490 | 915,736 | 1,878,226 | 140,619 | 464,714 | 605,333 | 2,483,559 |
| 2015 | Total | 17,797,044 | 4,713,674 | 22,510,718 | 11,687,489 | 7,631,190 | 19,318,679 | 41,829,397 |

Appendix B (continued)

**Revised 2006 Joint Center Interim Household Projections by Tenure and Age
(based on 1.2 million annual net immigrants and 2005 headship and family type held constant)**

| Year | Age | Total Minority Households | | | | | | Minority Households Total |
|------|-------|---------------------------|-------------------|--------------|----------------|--------------------|---------------|---------------------------|
| | | Owners Family | Owners Non-Family | Owners Total | Renters Family | Renters Non-Family | Renters Total | |
| 2020 | 15-19 | 54,417 | 18,102 | 72,518 | 326,818 | 138,092 | 464,911 | 537,429 |
| 2020 | 20-24 | 211,974 | 52,828 | 264,802 | 1,574,042 | 909,102 | 2,483,144 | 2,747,946 |
| 2020 | 25-29 | 833,743 | 132,292 | 966,035 | 2,319,746 | 1,133,315 | 3,453,061 | 4,419,096 |
| 2020 | 30-34 | 1,584,017 | 228,186 | 1,812,204 | 2,216,884 | 919,429 | 3,136,312 | 4,948,516 |
| 2020 | 35-39 | 2,216,419 | 279,500 | 2,495,919 | 1,837,408 | 707,822 | 2,545,230 | 5,041,149 |
| 2020 | 40-44 | 2,546,166 | 316,071 | 2,862,237 | 1,295,336 | 694,371 | 1,989,707 | 4,851,944 |
| 2020 | 45-49 | 2,596,087 | 445,425 | 3,041,512 | 905,829 | 659,321 | 1,565,150 | 4,606,662 |
| 2020 | 50-54 | 2,426,484 | 518,640 | 2,945,125 | 619,728 | 659,436 | 1,279,163 | 4,224,288 |
| 2020 | 55-59 | 2,223,613 | 583,516 | 2,807,129 | 512,351 | 668,096 | 1,180,447 | 3,987,576 |
| 2020 | 60-64 | 1,975,124 | 646,535 | 2,621,660 | 350,700 | 621,255 | 971,954 | 3,593,614 |
| 2020 | 65-69 | 1,553,493 | 643,763 | 2,197,256 | 233,919 | 476,483 | 710,402 | 2,907,658 |
| 2020 | 70-74 | 1,030,421 | 586,458 | 1,616,879 | 137,926 | 354,039 | 491,965 | 2,108,844 |
| 2020 | 75+ | 1,213,732 | 1,144,897 | 2,358,629 | 154,947 | 567,892 | 722,839 | 3,081,468 |
| 2020 | Total | 20,465,691 | 5,596,213 | 26,061,904 | 12,485,633 | 8,508,653 | 20,994,286 | 47,056,190 |

Appendix B (continued)

**Revised 2006 Joint Center Interim Household Projections by Tenure and Age
(based on 1.2 million annual net immigrants and 2005 headship and family type held constant)**

| | | Hispanic Households | | | | | | Hispanic Households |
|------|-------|---------------------|-------------------|--------------|----------------|--------------------|---------------|---------------------|
| Year | Age | Owners Family | Owners Non-Family | Owners Total | Renters Family | Renters Non-Family | Renters Total | Total |
| 2000 | 15-19 | 17,288 | 6,117 | 23,405 | 122,471 | 41,178 | 163,648 | 187,053 |
| 2000 | 20-24 | 84,332 | 15,346 | 99,678 | 581,051 | 233,549 | 814,600 | 914,278 |
| 2000 | 25-29 | 314,870 | 36,736 | 351,606 | 743,150 | 269,948 | 1,013,098 | 1,364,704 |
| 2000 | 30-34 | 539,149 | 47,642 | 586,791 | 717,119 | 168,855 | 885,974 | 1,472,765 |
| 2000 | 35-39 | 600,143 | 58,524 | 658,667 | 575,030 | 169,433 | 744,462 | 1,403,129 |
| 2000 | 40-44 | 589,011 | 38,654 | 627,666 | 412,065 | 121,779 | 533,844 | 1,161,510 |
| 2000 | 45-49 | 477,399 | 58,197 | 535,596 | 260,940 | 101,257 | 362,197 | 897,793 |
| 2000 | 50-54 | 393,681 | 58,251 | 451,932 | 157,748 | 88,802 | 246,550 | 698,482 |
| 2000 | 55-59 | 281,595 | 51,047 | 332,642 | 94,023 | 72,918 | 166,940 | 499,582 |
| 2000 | 60-64 | 228,686 | 49,093 | 277,779 | 55,199 | 60,335 | 115,534 | 393,313 |
| 2000 | 65-69 | 179,917 | 52,867 | 232,784 | 31,107 | 61,211 | 92,318 | 325,102 |
| 2000 | 70-74 | 135,767 | 46,490 | 182,257 | 24,806 | 55,854 | 80,660 | 262,917 |
| 2000 | 75+ | 149,278 | 84,791 | 234,068 | 30,550 | 90,922 | 121,472 | 355,540 |
| 2000 | Total | 3,991,116 | 603,755 | 4,594,871 | 3,805,258 | 1,536,039 | 5,341,297 | 9,936,168 |

| | | Hispanic Households | | | | | | Hispanic Households |
|------|-------|---------------------|-------------------|--------------|----------------|--------------------|---------------|---------------------|
| Year | Age | Owners Family | Owners Non-Family | Owners Total | Renters Family | Renters Non-Family | Renters Total | Total |
| 2005 | 15-19 | 19,867 | 7,031 | 26,898 | 141,599 | 47,610 | 189,209 | 216,107 |
| 2005 | 20-24 | 91,070 | 16,573 | 107,642 | 631,284 | 253,633 | 884,917 | 992,559 |
| 2005 | 25-29 | 357,308 | 41,688 | 398,996 | 849,677 | 308,176 | 1,157,853 | 1,556,849 |
| 2005 | 30-34 | 683,852 | 55,622 | 739,474 | 811,246 | 202,033 | 1,013,279 | 1,752,753 |
| 2005 | 35-39 | 754,867 | 68,165 | 823,032 | 629,014 | 200,276 | 829,290 | 1,652,322 |
| 2005 | 40-44 | 776,553 | 47,180 | 823,732 | 496,620 | 156,860 | 653,480 | 1,477,212 |
| 2005 | 45-49 | 646,219 | 70,912 | 717,131 | 341,067 | 142,306 | 483,373 | 1,200,504 |
| 2005 | 50-54 | 541,130 | 78,423 | 619,553 | 196,282 | 118,226 | 314,508 | 934,061 |
| 2005 | 55-59 | 423,607 | 78,938 | 502,545 | 121,052 | 100,816 | 221,868 | 724,413 |
| 2005 | 60-64 | 306,152 | 65,241 | 371,392 | 67,193 | 78,670 | 145,864 | 517,256 |
| 2005 | 65-69 | 225,985 | 71,393 | 297,378 | 39,943 | 72,365 | 112,308 | 409,686 |
| 2005 | 70-74 | 170,863 | 59,425 | 230,288 | 22,994 | 64,132 | 87,126 | 317,414 |
| 2005 | 75+ | 213,244 | 125,245 | 338,489 | 38,369 | 120,610 | 158,979 | 497,468 |
| 2005 | Total | 5,210,716 | 785,834 | 5,996,550 | 4,386,339 | 1,865,715 | 6,252,054 | 12,248,604 |

Appendix B (continued)

**Revised 2006 Joint Center Interim Household Projections by Tenure and Age
(based on 1.2 million annual net immigrants and 2005 headship and family type held constant)**

| | | Hispanic Households | | | | | | Hispanic Households |
|------|-------|---------------------|------------|-----------|-----------|------------|-----------|---------------------|
| Year | Age | Owners | Owners | Owners | Renters | Renters | Renters | Total |
| | | Family | Non-Family | Total | Family | Non-Family | Total | |
| 2010 | 15-19 | 23,569 | 8,340 | 31,909 | 168,816 | 56,765 | 225,581 | 257,490 |
| 2010 | 20-24 | 102,719 | 18,692 | 121,411 | 715,582 | 287,404 | 1,002,986 | 1,124,397 |
| 2010 | 25-29 | 382,450 | 44,622 | 427,072 | 915,074 | 331,487 | 1,246,560 | 1,673,632 |
| 2010 | 30-34 | 766,268 | 62,325 | 828,593 | 916,288 | 227,636 | 1,143,924 | 1,972,517 |
| 2010 | 35-39 | 933,939 | 78,920 | 1,012,859 | 694,630 | 236,985 | 931,615 | 1,944,474 |
| 2010 | 40-44 | 959,688 | 54,587 | 1,014,276 | 529,089 | 184,006 | 713,094 | 1,727,370 |
| 2010 | 45-49 | 842,842 | 86,870 | 929,712 | 403,479 | 182,290 | 585,769 | 1,515,481 |
| 2010 | 50-54 | 725,855 | 95,675 | 821,530 | 252,430 | 165,210 | 417,640 | 1,239,170 |
| 2010 | 55-59 | 576,617 | 105,409 | 682,027 | 146,015 | 133,081 | 279,095 | 961,122 |
| 2010 | 60-64 | 453,513 | 99,070 | 552,584 | 81,066 | 106,991 | 188,057 | 740,641 |
| 2010 | 65-69 | 300,200 | 94,115 | 394,315 | 46,950 | 93,550 | 140,500 | 534,815 |
| 2010 | 70-74 | 214,934 | 80,136 | 295,070 | 29,511 | 75,665 | 105,176 | 400,246 |
| 2010 | 75+ | 294,159 | 174,339 | 468,498 | 38,599 | 150,805 | 189,404 | 657,902 |
| 2010 | Total | 6,576,755 | 1,003,100 | 7,579,855 | 4,937,529 | 2,231,873 | 7,169,402 | 14,749,257 |

| | | Hispanic Households | | | | | | Hispanic Households |
|------|-------|---------------------|------------|-----------|-----------|------------|-----------|---------------------|
| Year | Age | Owners | Owners | Owners | Renters | Renters | Renters | Total |
| | | Family | Non-Family | Total | Family | Non-Family | Total | |
| 2015 | 15-19 | 25,020 | 8,854 | 33,874 | 179,925 | 60,500 | 240,425 | 274,299 |
| 2015 | 20-24 | 118,919 | 21,639 | 140,558 | 831,729 | 333,962 | 1,165,691 | 1,306,249 |
| 2015 | 25-29 | 424,223 | 49,495 | 473,718 | 1,020,035 | 369,147 | 1,389,182 | 1,862,900 |
| 2015 | 30-34 | 812,963 | 66,123 | 879,086 | 978,344 | 242,579 | 1,220,923 | 2,100,009 |
| 2015 | 35-39 | 1,038,447 | 87,750 | 1,126,197 | 778,669 | 264,728 | 1,043,397 | 2,169,594 |
| 2015 | 40-44 | 1,169,726 | 62,705 | 1,232,431 | 569,305 | 215,994 | 785,299 | 2,017,730 |
| 2015 | 45-49 | 1,030,749 | 100,231 | 1,130,980 | 418,758 | 212,810 | 631,567 | 1,762,547 |
| 2015 | 50-54 | 937,285 | 116,847 | 1,054,132 | 289,757 | 210,375 | 500,131 | 1,554,263 |
| 2015 | 55-59 | 767,308 | 128,813 | 896,122 | 184,162 | 185,200 | 369,361 | 1,265,483 |
| 2015 | 60-64 | 610,976 | 131,143 | 742,118 | 92,198 | 139,906 | 232,104 | 974,222 |
| 2015 | 65-69 | 439,401 | 140,648 | 580,049 | 52,364 | 125,196 | 177,560 | 757,609 |
| 2015 | 70-74 | 284,506 | 105,296 | 389,802 | 33,454 | 97,361 | 130,816 | 520,618 |
| 2015 | 75+ | 381,201 | 240,415 | 621,616 | 50,696 | 181,599 | 232,295 | 853,911 |
| 2015 | Total | 8,040,723 | 1,259,960 | 9,300,683 | 5,479,395 | 2,639,356 | 8,118,751 | 17,419,434 |

Appendix B (continued)

**Revised 2006 Joint Center Interim Household Projections by Tenure and Age
(based on 1.2 million annual net immigrants and 2005 headship and family type held constant)**

| Year | Age | Hispanic Households | | | | | | Hispanic Households Total |
|------|-------|---------------------|-------------------|--------------|----------------|--------------------|---------------|---------------------------|
| | | Owners Family | Owners Non-Family | Owners Total | Renters Family | Renters Non-Family | Renters Total | |
| 2020 | 15-19 | 28,479 | 10,078 | 38,557 | 205,539 | 69,115 | 274,654 | 313,211 |
| 2020 | 20-24 | 125,244 | 22,791 | 148,035 | 879,112 | 352,901 | 1,232,013 | 1,380,048 |
| 2020 | 25-29 | 483,375 | 56,397 | 539,772 | 1,167,435 | 422,117 | 1,589,552 | 2,129,324 |
| 2020 | 30-34 | 892,991 | 72,632 | 965,623 | 1,080,835 | 267,524 | 1,348,359 | 2,313,982 |
| 2020 | 35-39 | 1,097,453 | 92,738 | 1,190,191 | 828,947 | 280,939 | 1,109,887 | 2,300,078 |
| 2020 | 40-44 | 1,295,615 | 69,454 | 1,365,069 | 636,627 | 240,209 | 876,836 | 2,241,905 |
| 2020 | 45-49 | 1,246,221 | 115,149 | 1,361,370 | 440,060 | 249,027 | 689,087 | 2,050,457 |
| 2020 | 50-54 | 1,135,782 | 134,476 | 1,270,258 | 286,550 | 244,825 | 531,375 | 1,801,633 |
| 2020 | 55-59 | 984,067 | 157,066 | 1,141,133 | 203,975 | 235,023 | 438,998 | 1,580,131 |
| 2020 | 60-64 | 807,827 | 160,477 | 968,304 | 112,876 | 194,421 | 307,297 | 1,275,601 |
| 2020 | 65-69 | 588,377 | 185,152 | 773,528 | 55,278 | 162,802 | 218,080 | 991,608 |
| 2020 | 70-74 | 414,550 | 156,520 | 571,070 | 34,268 | 129,542 | 163,809 | 734,879 |
| 2020 | 75+ | 507,367 | 317,250 | 824,617 | 57,400 | 234,594 | 291,994 | 1,116,611 |
| 2020 | Total | 9,607,348 | 1,550,179 | 11,157,527 | 5,988,903 | 3,083,038 | 9,071,941 | 20,229,468 |